

PRODUCT INFORMATION

Target	ROR1
Synonyms	ROR1;NTRKR1
Description	Recombinant Human ROR1 Protein with C-terminal 6×His tag
Delivery	In Stock
Uniprot ID	Q01973
Expression Host	HEK293
Tag	C-6×His Tag
Molecular Characterization	ROR1(Gln30-Glu403) 6×His tag
Molecular Weight	The protein has a predicted molecular mass of 42.8 kDa after removal of the signal peptide. The apparent molecular mass of ROR1-His is approximately 55-70 kDa due to glycosylation.
Purity	The purity of the protein is greater than 95% as determined by SDS-PAGE and Coomassie blue staining.
Formulation & Reconstitution	Lyophilized from sterile PBS, pH 7.4. Normally 5 % - 8% trehalose is added as protectants before lyophilization. Please see Certificate of Analysis for specific instructions of reconstitution.
Storage&Shipping	Store at -20°C to -80°C for 12 months in lyophilized form. After reconstitution, if not intended for use within a month, aliquot and store at -80°C (Avoid repeated freezing and thawing). Lyophilized proteins are shipped at ambient temperature.
Background	This gene encodes a receptor tyrosine kinase-like orphan receptor that modulates neurite growth in the central nervous system. The encoded protein is a glycosylated type I membrane protein that belongs to the ROR subfamily of cell surface receptors. It is a pseudokinase that lacks catalytic activity and may interact with the non-canonical Wnt signalling pathway. This gene is highly expressed during early embryonic development but expressed at very low levels in adult tissues. Increased expression of this gene is associated with B-cell chronic lymphocytic leukaemia. Alternative splicing results in multiple transcript variants encoding different isoforms. [provided by RefSeq, Jun 2012]
Usage	Research use only
Conjugate	Unconjugated



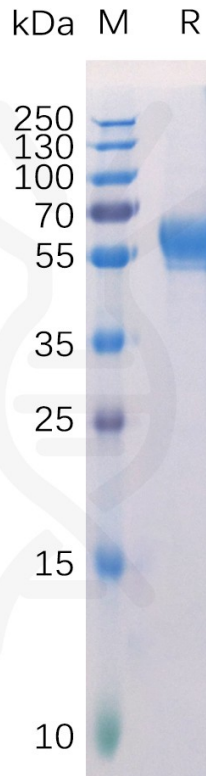


Figure 1. Human ROR1 Protein, His Tag on SDS-PAGE under reducing condition.

Human ROR1, His tagged protein ELISA

0.1 μg of Human ROR1, His tagged protein per well

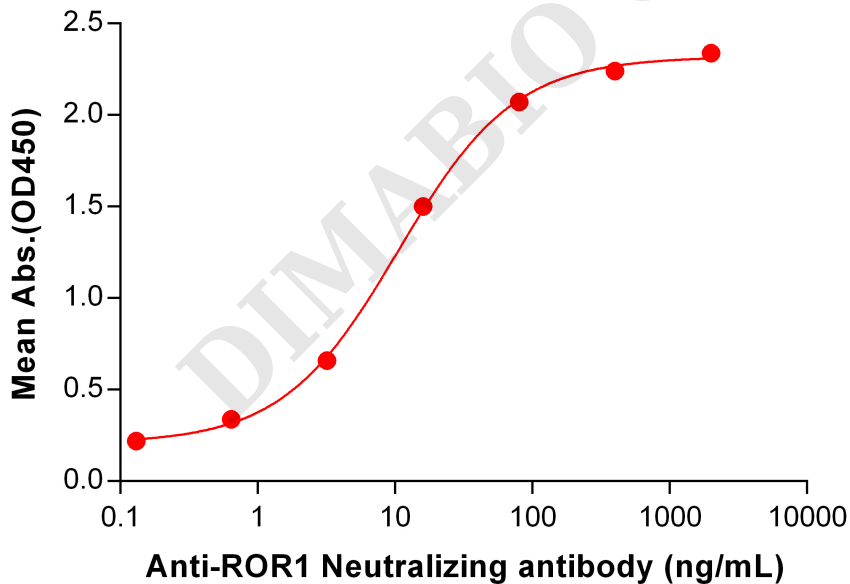


Figure 2. ELISA plate pre-coated by 2 $\mu\text{g}/\text{ml}$ (100 $\mu\text{l}/\text{well}$) Human ROR1, His tagged protein (PME100399) can bind Anti-ROR1 Neutralizing antibody (BME100073) in a linear range of 0.64-16 $\mu\text{g}/\text{ml}$.



Human ROR1, His Tagged protein ELISA

0.2 μ g of Human ROR1, His tagged protein per well

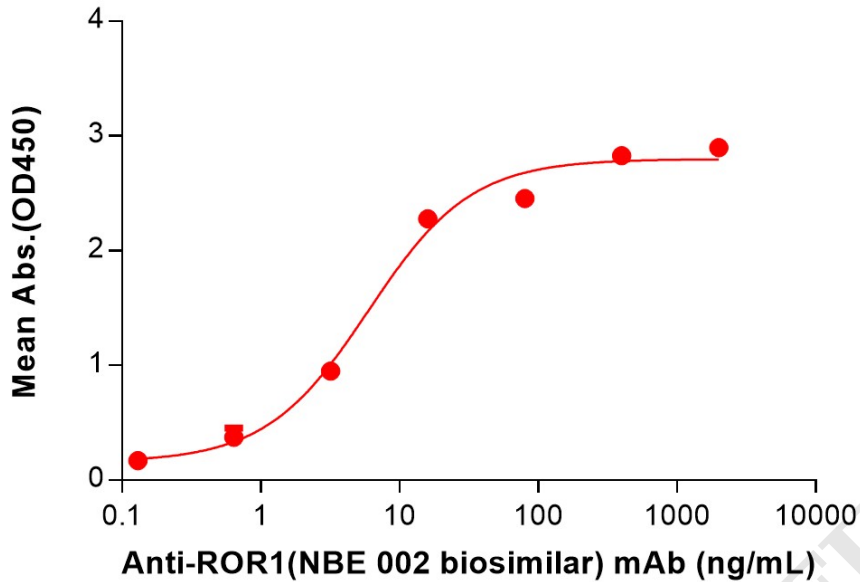


Figure 3. ELISA plate pre-coated by 2 μ g/mL (100 μ L/well) Human ROR1 Protein, His Tag (PME100399) can bind Anti-ROR1(NBE 002 biosimilar) mAb (BME100191) in a linear range of 0.64-16 ng/mL.

Human ROR1, His Tagged Protein ELISA

0.2 μ g of Human ROR1, His tagged protein per well

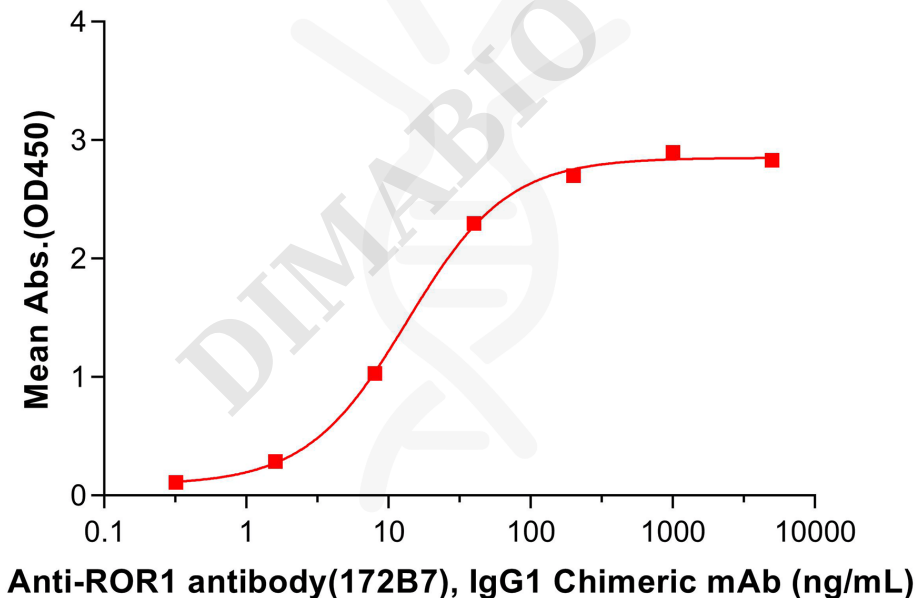


Figure 4. ELISA plate pre-coated by 2 μ g/mL (100 μ L/well) Human ROR1 Protein, His Tag(PME100399) can bind Anti-ROR1 antibody(172B7), IgG1 Chimeric mAb(DMC100253) in a linear range of 8-40ng/mL.

