

PRODUCT INFORMATION

Target	SCF
Synonyms	DCUA;DFNA69;FPH2;FPHH;Kitl;KL-1;MGF;SCF;SF;SHEP7;SLF
Description	Recombinant human SCF protein with C-terminal human Fc tag
Delivery	In Stock
Uniprot ID	P21583
Expression Host	HEK293
Tag	C-Human Fc Tag
Molecular Characterization	SCF(Glu26-His214) hFc(Glu99-Ala330)
Molecular Weight	The protein has a predicted molecular mass of 47.2 kDa after removal of the signal peptide. The apparent molecular mass of SCF-hFc is approximately 55-75 kDa due to glycosylation.
Purity	The purity of the protein is greater than 95% as determined by SDS-PAGE and Coomassie blue staining.
Formulation & Reconstitution	Lyophilized from sterile PBS, pH 7.4. Normally 5% - 8% trehalose is added as protectants before lyophilization. Please see Certificate of Analysis for specific instructions of reconstitution.
Storage & Shipping	Store at -20°C to -80°C for 12 months in lyophilized form. After reconstitution, if not intended for use within a month, aliquot and store at -80°C (Avoid repeated freezing and thawing). Lyophilized proteins are shipped at ambient temperature.
Sterility	Products are supplied non-sterile. For cell culture applications, dilute in appropriate medium and sterile-filter (0.22 µm) prior to use.
Background	This gene encodes the ligand of the tyrosine-kinase receptor encoded by the KIT locus. This ligand is a pleiotropic factor that acts in utero in germ cell and neural cell development, and hematopoiesis, all believed to reflect a role in cell migration. In adults, it functions pleiotropically, while mostly noted for its continued requirement in hematopoiesis. Two transcript variants encoding different isoforms have been found for this gene. [provided by RefSeq, Jul 2008]
Usage	Research use only
Conjugate	Unconjugated



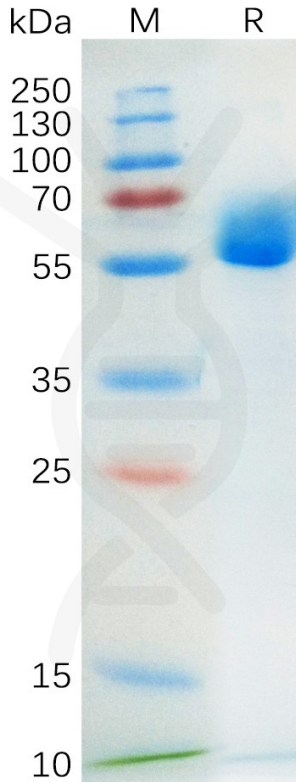


Figure 1. Human SCF Protein, hFc Tag on SDS-PAGE under reducing condition.

Human SCF, hFc tagged protein ELISA

0.2 μ g of Human CD117, His tagged protein per well

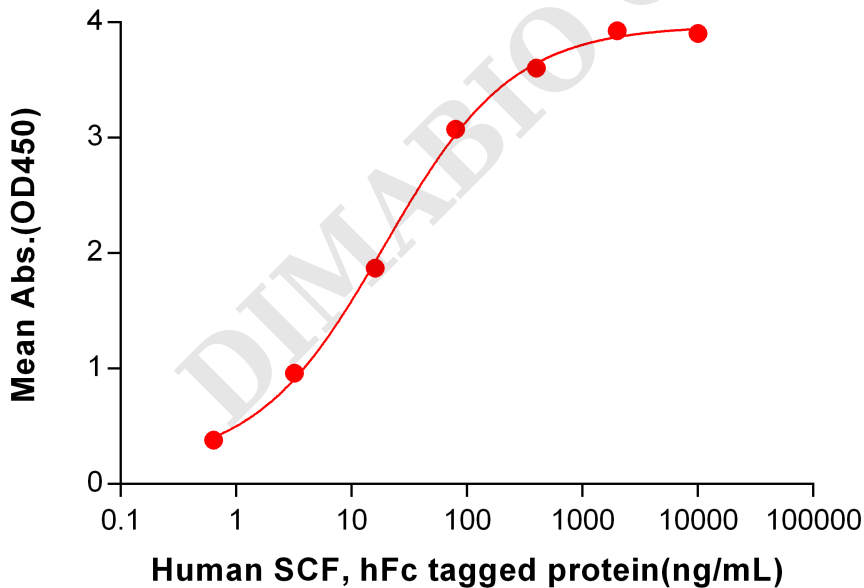


Figure 2. ELISA plate pre-coated by 1 μ g/ml (100 μ l/well) Human CD117, His tagged protein PME100519 can bind Human SCF, hFc tagged protein (PME100563) in a linear range of 3.2-400 ng/ml.

