

PRODUCT INFORMATION

Target	SEMA4D
Synonyms	A8;BB18;GR3;CD100;C9orf164;CD100;SEMAJ
Description	Recombinant human SEMA4D protein with C-terminal 6×His tag
Delivery	In Stock
Uniprot ID	Q92854
Expression Host	HEK293
Tag	C-6×His Tag
Molecular Characterization	SEMA4D(Met22-Arg734) 6×His tag
Molecular Weight	The protein has a predicted molecular mass of 80 kDa after removal of the signal peptide. The apparent molecular mass of SEMA4D-His is approximately 95-130 kDa due to glycosylation.
Purity	The purity of the protein is greater than 85% as determined by SDS-PAGE and Coomassie blue staining.
Formulation & Reconstitution	Lyophilized from sterile PBS, pH 7.4. Normally 5 % - 8% trehalose is added as protectants before lyophilization. Please see Certificate of Analysis for specific instructions of reconstitution.
Storage&Shipping	Store at -20°C to -80°C for 12 months in lyophilized form. After reconstitution, if not intended for use within a month, aliquot and store at -80°C (Avoid repeated freezing and thawing). Lyophilized proteins are shipped at ambient temperature.
Sterility	Products are supplied non-sterile. For cell culture applications, dilute in appropriate medium and sterile-filter (0.22 µm) prior to use.
Background	Cell surface receptor for PLXNB1 and PLXNB2 that plays an important role in cell-cell signaling (PubMed:20877282). Regulates GABAergic synapse development (By similarity). Promotes the development of inhibitory synapses in a PLXNB1-dependent manner (By similarity). Modulates the complexity and arborization of developing neurites in hippocampal neurons by activating PLXNB1 and interaction with PLXNB1 mediates activation of RHOA (PubMed:19788569). Promotes the migration of cerebellar granule cells (PubMed:16055703). Plays a role in the immune system; induces B-cells to aggregate and improves their viability (in vitro) (PubMed:8876214). Induces endothelial cell migration through the activation of PTK2B/PYK2, SRC, and the phosphatidylinositol 3-kinase-AKT pathway (PubMed:16055703).[UniProtKB/Swiss-Prot Function]
Usage	Research use only
Conjugate	Unconjugated



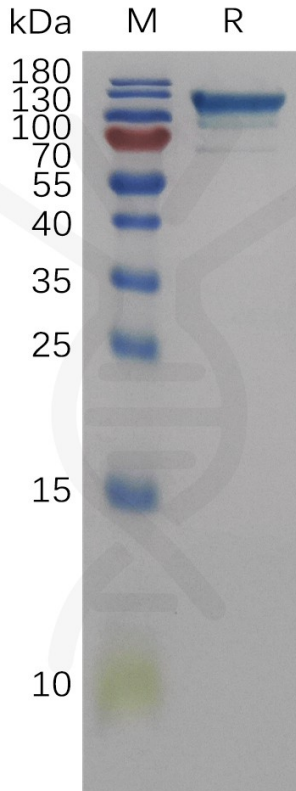


Figure 1. Human SEMA4D Protein, His Tag on SDS-PAGE under reducing condition.

Human SEMA4D, His Tagged protein ELISA

0.2 µg of Human SEMA4D, His tagged protein per well

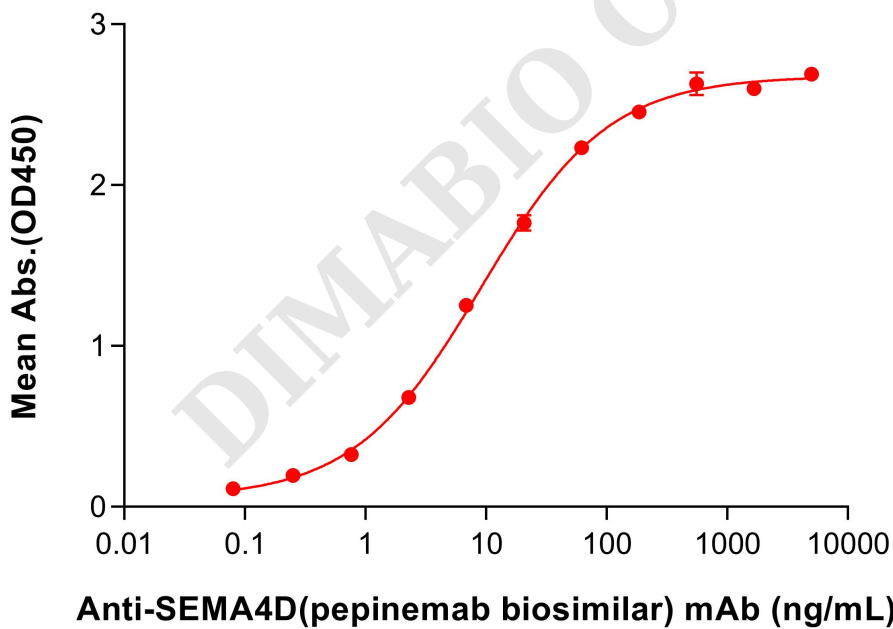


Figure 2. ELISA plate pre-coated by 2 µg/mL (100 µL/well) Human SEMA4D Protein, His Tag (PME101131) can bind Anti-SEMA4D (pepinemab biosimilar) mAb (BME100614) in a linear range of 2.29-20.58 ng/mL.

