

PRODUCT INFORMATION

Target	TIGIT
Synonyms	TIGIT;VSIG9;VSTM3
Description	Recombinant human TIGIT Protein with C-terminal human Fc tag
Delivery	In Stock
Uniprot ID	Q495A1
Expression Host	HEK293
Tag	C-Human Fc Tag
Molecular Characterization	TIGIT(Met22-Pro141) hFc(Glu99-Ala330)
Molecular Weight	The protein has a predicted molecular mass of 39.13 kDa after removal of the signal peptide. The apparent molecular mass of TIGIT-hFc is approximately 40-53 kDa due to glycosylation.
Purity	The purity of the protein is greater than 95% as determined by SDS-PAGE and Coomassie blue staining.
Formulation & Reconstitution	Lyophilized from sterile PBS, pH 7.4. Normally 5 % - 8% trehalose is added as protectants before lyophilization. Please see Certificate of Analysis for specific instructions of reconstitution.
Storage & Shipping	Store at -20°C to -80°C for 12 months in lyophilized form. After reconstitution, if not intended for use within a month, aliquot and store at -80°C (Avoid repeated freezing and thawing). Lyophilized proteins are shipped at ambient temperature.
Background	This gene encodes a member of the PVR (poliovirus receptor) family of immunoglobulin proteins. The product of this gene is expressed on several classes of T cells including follicular B helper T cells (TFH). The protein has been shown to bind PVR with high affinity, this binding is thought to assist interactions between TFH and dendritic cells to regulate T cell dependent B cell responses.
Usage	Research use only



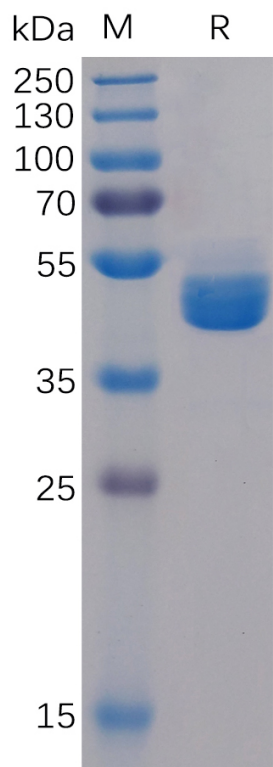


Figure 1. Human TIGIT Protein, hFc Tag on SDS-PAGE under reducing condition.

**Human TIGIT, hFc Tagged protein ELISA**

0.2 µg of TIGIT, hFc Tagged protein per well

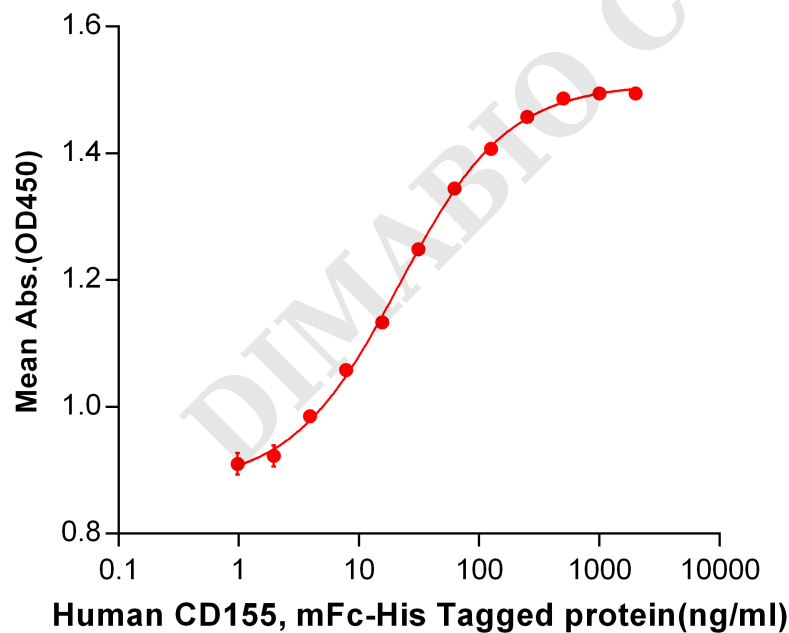


Figure 2. ELISA plate pre-coated by 2 µg/ml (100 µl/well) Human CD155, mFc-His tagged protein ([getskuurl sku"PME100027"]]) can bind Human TIGIT, hFc tagged protein (PME100107) in a linear range of 1.95-125 ng/ml.



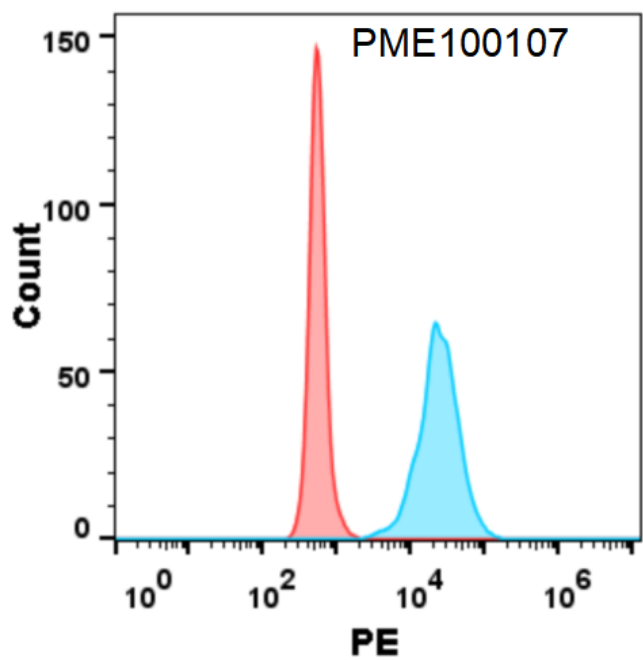


Figure 3. Flow cytometry analysis with 1  $\mu$ g/mL Human TIGIT Protein, hFc tag (PME100107) on Expi293 cells transfected with human CD112 (Blue histogram) or Expi293 cells transfected with irrelevant protein (Red histogram).

**Human TIGIT, hFc Tagged protein ELISA**

0.2  $\mu$ g of Human TIGIT, hFc tagged protein per well

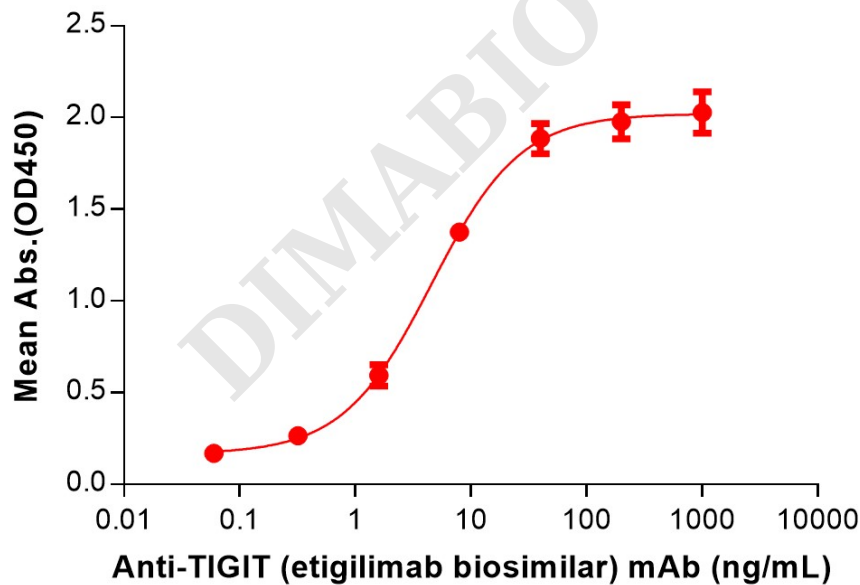


Figure 4. ELISA plate pre-coated by 2  $\mu$ g/mL (100  $\mu$ L/well) Human TIGIT Protein, hFc Tag (PME100107) can bind Anti-TIGIT (etigilimab biosimilar) mAb (BME100024) in a linear range of 0.32–8 ng/mL.

