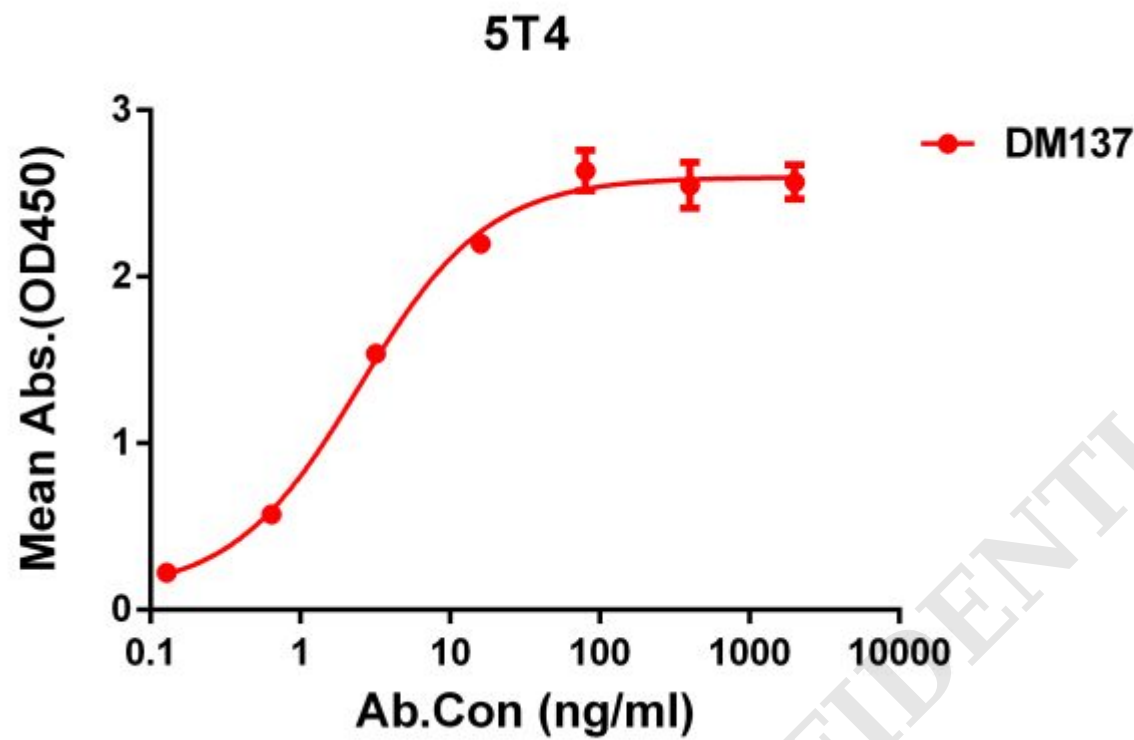


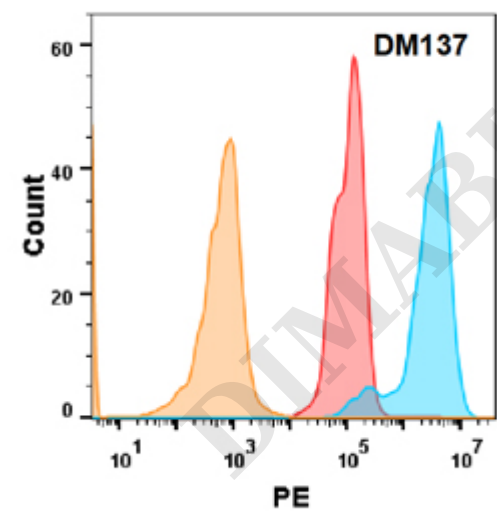
PRODUCT INFORMATION

Clone ID	DM137
Target	5T4
Synonyms	5T4
Host Species	Rabbit
Description	Anti-5T4 antibody(DM137); Rabbit mAb
Delivery	In Stock
Uniprot ID	Q13641
IgG type	Rabbit IgG
Clonality	Monoclonal
Reactivity	Human
Applications	ELISA; Flow Cyt
Recommended Dilutions	ELISA 1:5000-10000; Flow Cyt 1:100
Purification	Purified from cell culture supernatant by affinity chromatography
Formulation & Reconstitution	Lyophilized from sterile PBS, pH 7.4. Normally 5 % - 8% trehalose is added as protectants before lyophilization. Please see Certificate of Analysis for specific instructions of reconstitution.
Storage & Shipping	Store at -20°C to -80°C for 12 months in lyophilized form. After reconstitution, if not intended for use within a month, aliquot and store at -80°C (Avoid repeated freezing and thawing). Lyophilized proteins are shipped at ambient temperature.
Background	This gene encodes a leucine-rich transmembrane glycoprotein that may be involved in cell adhesion. The encoded protein is an oncofetal antigen that is specific to trophoblast cells. In adults this protein is highly expressed in many tumor cells and is associated with poor clinical outcome in numerous cancers. Alternate splicing in the 5' UTR results in multiple transcript variants that encode the same protein.
Usage	Research use only
Conjugate	Unconjugated
DIMA Disclaimer	All DIMA recombinant antibodies are genuinely generated by DIMA Biotech. They are all under patent application. Any protein sequencing or reverse engineering attempt is prohibited. We are actively scrutinizing all patent application to ensure no IP infringement.





**Figure 1.** ELISA plate pre-coated by 1 µg/ml (100 µl/well) Human 5T4 protein, His tagged protein (Iggetskuurl sku="PME100123") can bind Rabbit anti-5T4 monoclonal antibody(**clone: DM137**) in a linear range of 0.1-16 ng/ml.



**Figure 2.** 5T4 protein is highly expressed on the surface of HEK293 cell membrane. Flow cytometry analysis with Anti-5T4 (DM137) on HEK293 cells transfected with human 5T4 (Blue histogram) or HEK293 transfected with irrelevant protein (Red histogram),and Isotype antibody on HEK293 transfected with irrelevant protein (Orange histogram)

