

PRODUCT INFORMATION

Common Name	BYM338
Conjugate	Unconjugated
Synonyms	AVR2B; ACTR-IIB
Applications	ELISA, Flow Cyt
Recommended Dilutions	ELISA 1:5000-10000, Flow Cyt 1:100
Formulation & Reconstitution	Lyophilized from sterile PBS, pH 7.4. Normally 5 % - 8% trehalose is added as protectants before lyophilization. Please see Certificate of Analysis for specific instructions of reconstitution.
Host Species	Homo sapiens
IgG type	Human IgG1(K214R,L234A,L235A) - Kappa
Reactivity	Human
Target	ACVR2B
Uniprot ID	Q13705
Description	Anti-ACVR2B(bimagrumab biosimilar) mAb
Delivery	In Stock
Storage & Shipping	Store at -20°C to -80°C for 12 months in lyophilized form. After reconstitution, if not intended for use within a month, aliquot and store at -80°C (Avoid repeated freezing and thawing). Lyophilized antibodies are shipped at ambient temperature.
Background	Research grade biosimilar. Not for use in therapeutic or diagnostic procedures for humans or animals.
Usage	Research use only



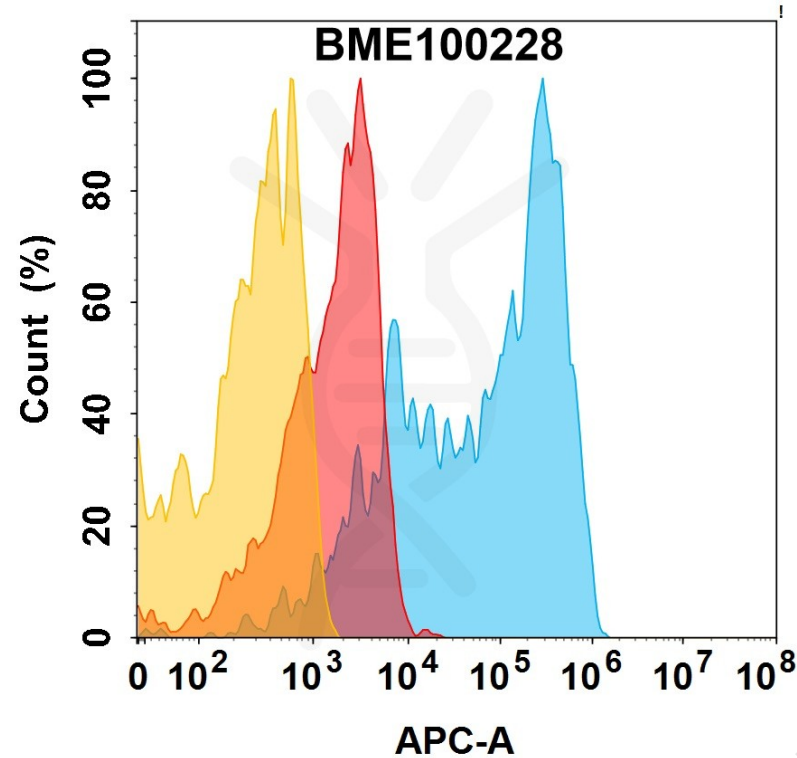


Figure 1. Flow cytometry analysis with 15µg/mL Anti-ACVR2B(bimagrumab biosimilar) mAb (BME100228) on HEK293 cells transfected with Human ACVR2B protein (Blue histogram) or HEK293 transfected with irrelevant protein (Red histogram).

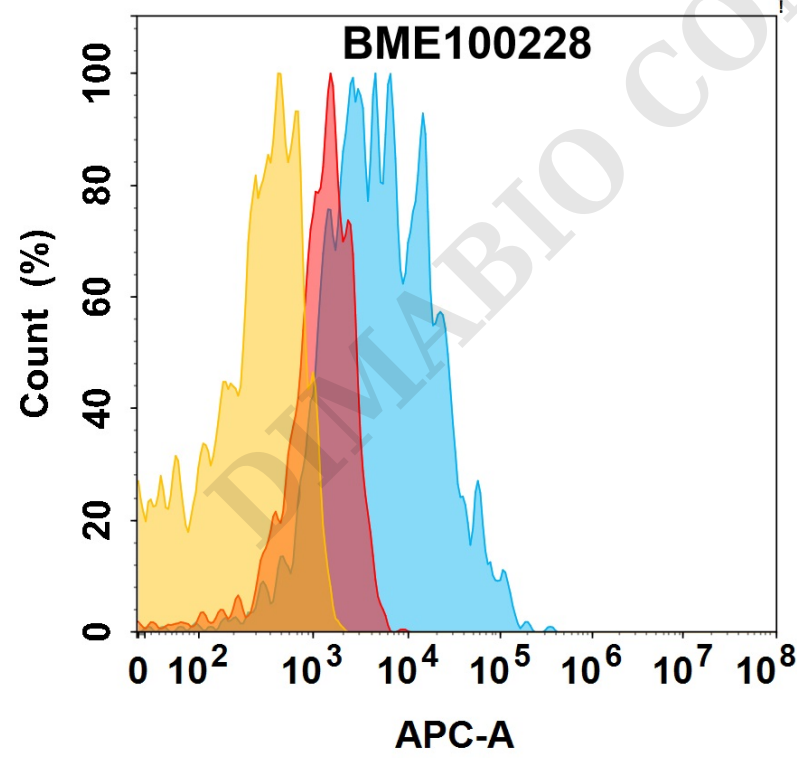


Figure 2. Flow cytometry analysis with 1µg/mL Anti-ACVR2B(bimagrumab biosimilar) mAb (BME100228) on HEK293 cells transfected with Human ACVR2A protein (Blue histogram) or HEK293 transfected with irrelevant protein (Red histogram).



Anti-ACVR2B(bimagrumab biosimilar) mAb ELISA

0.2 µg of Human ACVR2B, hFc tagged protein per well

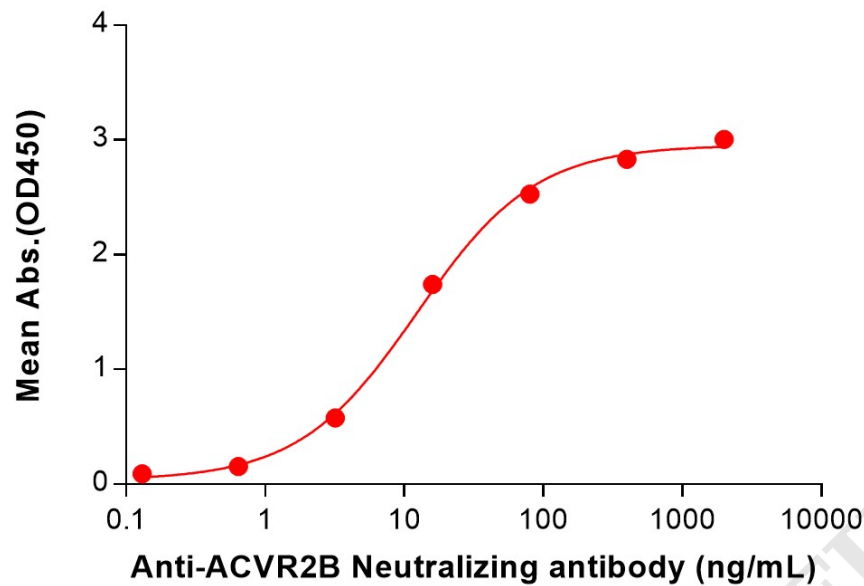


Figure 3. ELISA plate pre-coated by 2 µg/mL (100 µL/well) Human ACVR2B Protein, hFc Tag (PME101551) can bind Anti-ACVR2B(bimagrumab biosimilar) mAb (BME100228) in a linear range of 0.64–80 ng/mL. In order to specifically detect BME100228, mouse anti-human Fab-specific antibody was used as detection antibody.

Anti-ACVR2B(bimagrumab biosimilar) mAb ELISA

0.2 µg of Human ACVR2A(20-135), His tagged protein per well

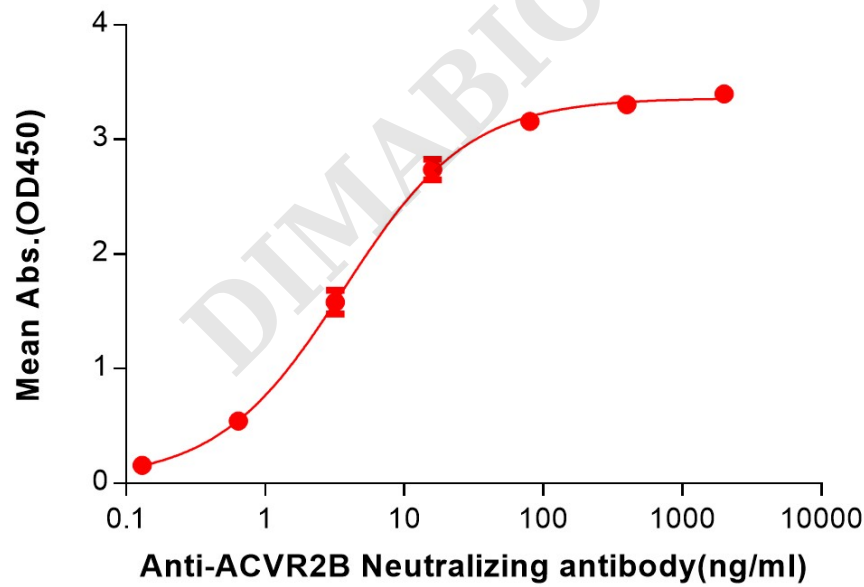


Figure 4. ELISA plate pre-coated by 2 µg/mL (100 µL/well) Human ACVR2A(20-135) Protein, His Tag (PME101716) can bind Anti-ACVR2B(bimagrumab biosimilar) mAb (BME100228) in a linear range of 0.13–16 ng/mL.



Anti-ACVR2B(bimagrumab biosimilar) mAb ELISA

0.2 μg of Human ACVR2B(19-137), His tagged protein per well

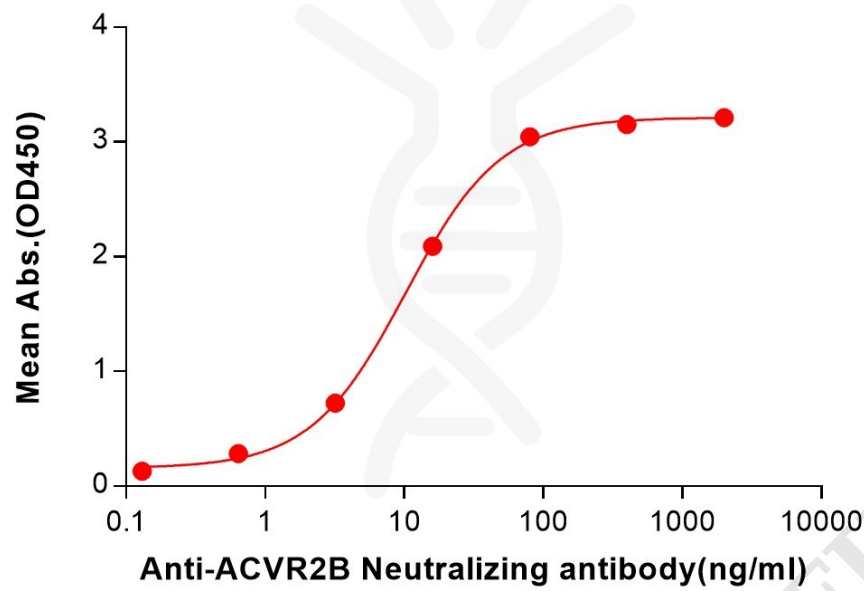


Figure 5. ELISA plate pre-coated by 2 μg/mL (100 μL/well) Human ACVR2B(19-137) Protein, His Tag (PME101717) can bind Anti-ACVR2B(bimagrumab biosimilar) mAb (BME100228) in a linear range of 0.64-80 ng/mL.

