

PRODUCT INFORMATION

Common Name	IMGC 936,IMGC-936,IMGC936
Conjugate	Unconjugated
Synonyms	CORD9;MCMP;MDC9;Mltng
Applications	ELISA, Flow Cyt
Recommended Dilutions	ELISA 1:5000-10000, Flow Cyt 1:100
Formulation & Reconstitution	Lyophilized from sterile PBS, pH 7.4. Normally 5% - 8% trehalose is added as protectants before lyophilization. Please see Certificate of Analysis for specific instructions of reconstitution.
Host Species	Humanized
IgG type	Human IgG1(K214R,M252Y,S254T,T256E,S442C) - Kappa
Reactivity	Human
Target	ADAM9
Uniprot ID	Q13443
Description	Anti-ADAM9(izeltabart biosimilar) mAb
Delivery	In Stock
Storage & Shipping	Store at -20°C to -80°C for 12 months in lyophilized form. After reconstitution, if not intended for use within a month, aliquot and store at -80°C (Avoid repeated freezing and thawing). Lyophilized antibodies are shipped at ambient temperature.
Background	Research grade biosimilar. Not for use in therapeutic or diagnostic procedures for humans or animals.
Usage	Research use only



Anti-ADAM9(izeltabart biosimilar) mAb ELISA

0.2 μ g of Human ADAM9, His tagged protein per well

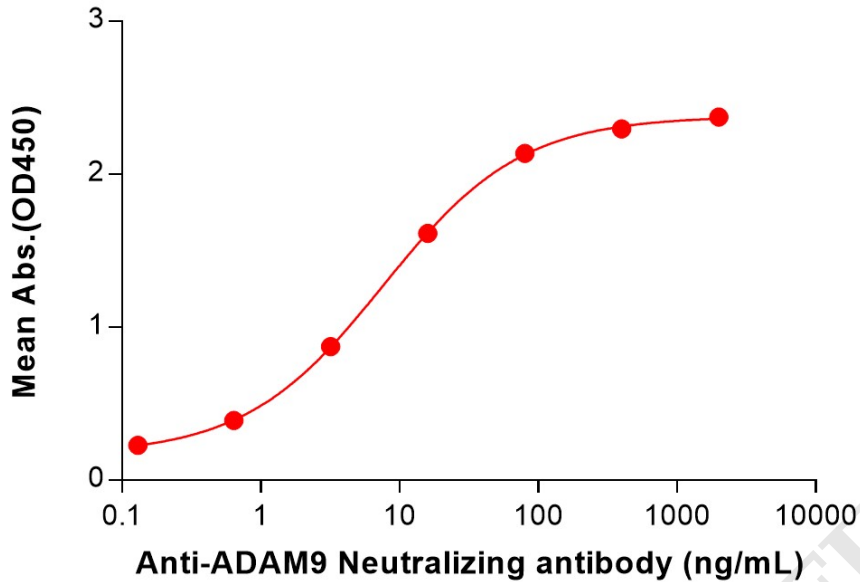


Figure 1. ELISA plate pre-coated by 2 μ g/mL (100 μ L/well) Human ADAM9 Protein, His Tag (PME100901) can bind Anti-ADAM9(izeltabart biosimilar) mAb (BME100230) in a linear range of 0.64-80 ng/mL.

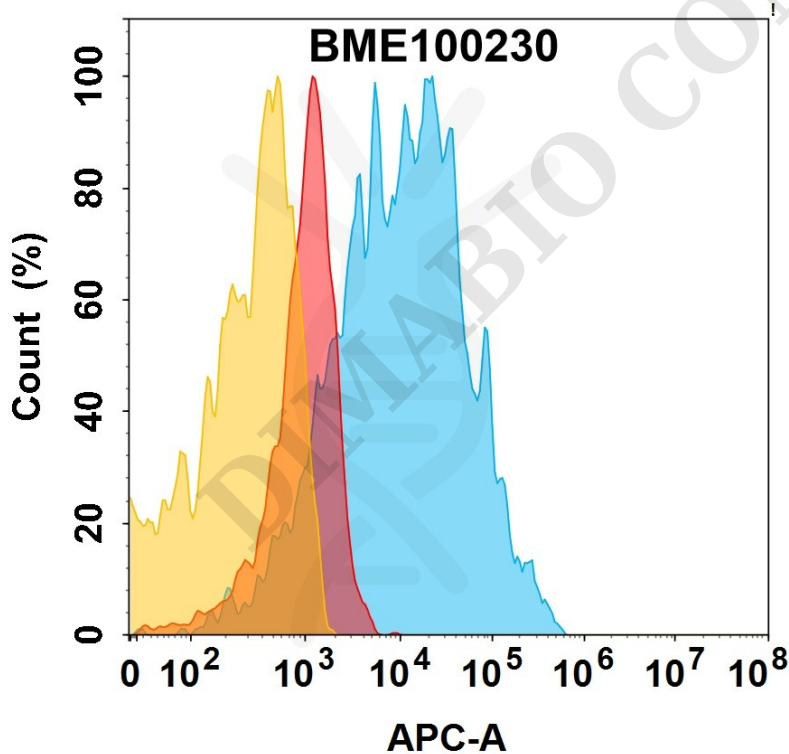


Figure 2. ADAM9 protein is highly expressed on the surface of HEK293 cell membrane. Flow cytometry analysis with 1 μ g/mL Anti-ADAM9(izeltabart biosimilar) mAb (BME100230) on HEK293 cells transfected with Human ADAM9 protein (Blue histogram) or HEK293 transfected with irrelevant protein (Red histogram).

