

PRODUCT INFORMATION

Common Name	HuMax-AXL-ADC, Unconjugated mAb
Conjugate	Unconjugated
Synonyms	AXL;UFO
Applications	ELISA; Flow Cyt
Recommended Dilutions	ELISA 1:5000-10000; Flow Cyt 1:100
Formulation & Reconstitution	Lyophilized from sterile PBS, pH 7.4. Normally 5 % - 8% trehalose is added as protectants before lyophilization. Please see Certificate of Analysis for specific instructions of reconstitution.
Host Species	Homo sapiens
IgG type	Human IgG1 - kappa
Reactivity	Human
Target	AXL
Uniprot ID	P30530
Description	Anti-AXL (enapotamab biosimilar) mAb
Delivery	In Stock
Storage & Shipping	Store at -20°C to -80°C for 12 months in lyophilized form. After reconstitution, if not intended for use within a month, aliquot and store at -80°C (Avoid repeated freezing and thawing). Lyophilized proteins are shipped at ambient temperature.
Background	Research grade biosimilar. Not for use in therapeutic or diagnostic procedures for humans or animals. Our unconjugated biosimilar monoclonal antibodies (mAbs) are based on the sequences outlined in relevant patents or scientific publications. These antibodies are in their native, unconjugated form, meaning they do not contain any payload or therapeutic agent attached. They are designed for use in research and development, and their performance has been tested as standalone molecules through comprehensive QC tests.
Usage	Research use only



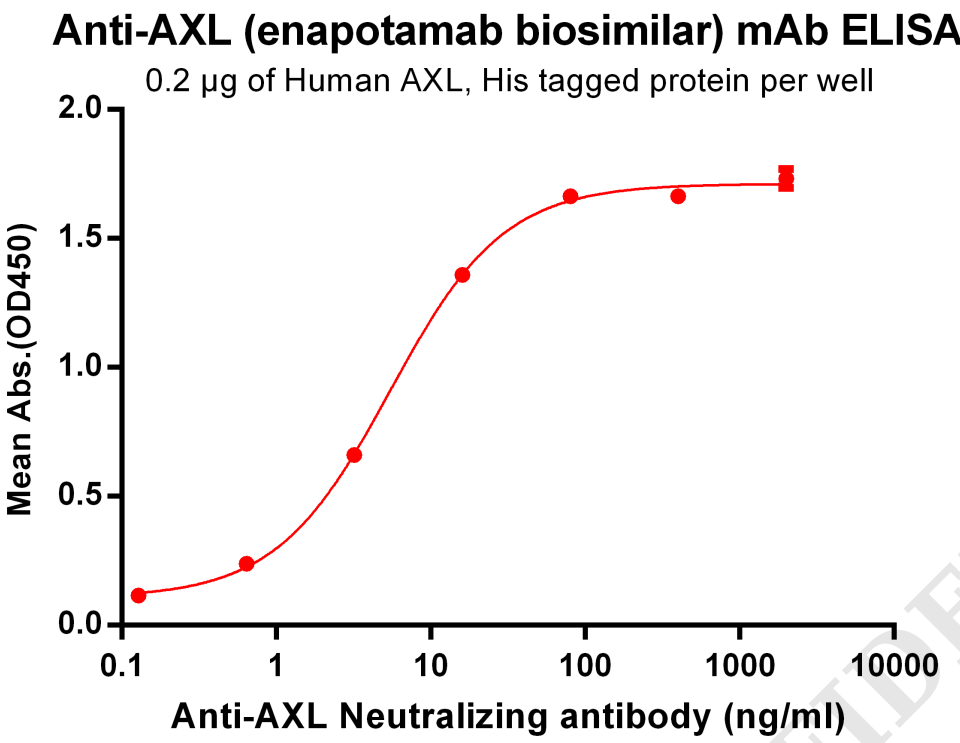


Figure 1. ELISA plate pre-coated by 2 μ g/ml (100 μ l/well) Human AXL, His tagged protein PME100070 can bind Anti-AXL Neutralizing antibody in a linear range of 0.64-80 ng/ml.

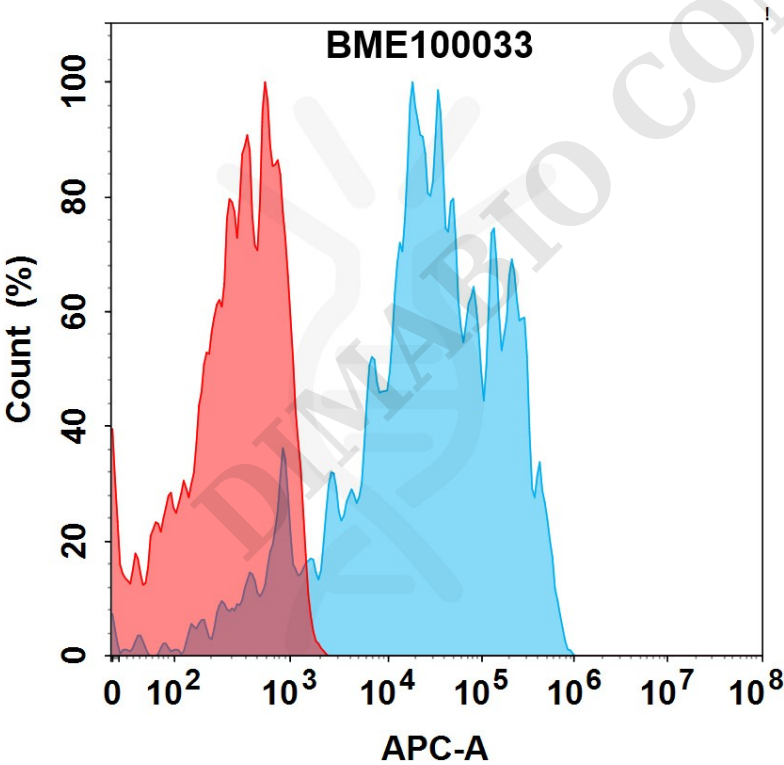


Figure 2. Flow cytometry analysis with 1 μ g/mL Anti-AXL(enapotamab biosimilar) mAb (BME100033) on HEK293 cells transfected with Human AXL protein (Blue histogram) or HEK293 transfected with irrelevant protein (Red histogram).



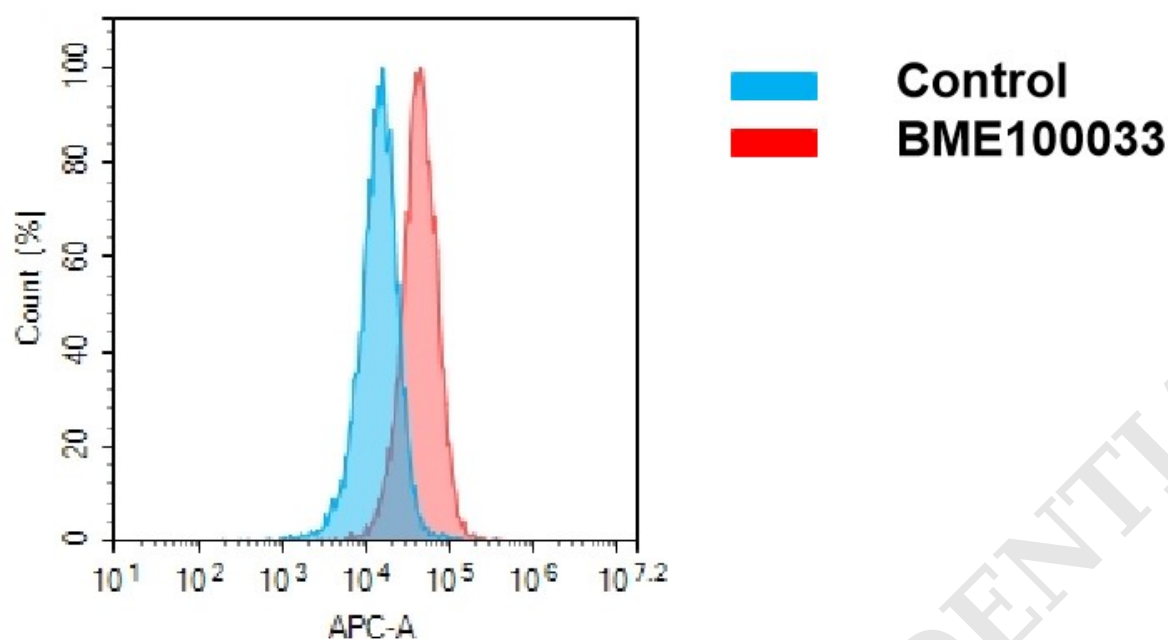
**A**

Figure 3. Flow cytometry analysis of antigen binding of anti-human AXL mAb(BME100033).
(A) A clear peak shift of BME100033 was seen compared to the control when incubated with AXL-expressing Hela cells, indicating strong binding of BME100033 to AXL. Antibodies were incubated at 2 $\mu\text{g/mL}$.

