

PRODUCT INFORMATION

Common Name	BA301, F1-2-15
Synonyms	UFO
Applications	ELISA, Flow Cyt
Recommended Dilutions	ELISA 1:5000-10000, Flow Cyt 1:100
Formulation & Reconstitution	Lyophilized from sterile PBS, pH 7.4. Normally 5 % - 8% trehalose is added as protectants before lyophilization. Please see Certificate of Analysis for specific instructions.
Host Species	Humanized
IgG type	IgG1(E239D, M241L)
Reactivity	Human
Target	AXL
Uniprot ID	P30530
Description	Anti-AXL(mecbotamab biosimilar) mAb
Delivery	In Stock
Storage & Shipping	Store at -20°C to -80°C for 12 months in lyophilized form. After reconstitution, if not intended for use within a month, aliquot and store at -80°C (Avoid repeated freezing and thawing).Lyophilized antibodies are shipped at ambient temperature.
Background	Research grade biosimilar. Not for use in therapeutic or diagnostic procedures for humans or animals.
Usage	Research use only



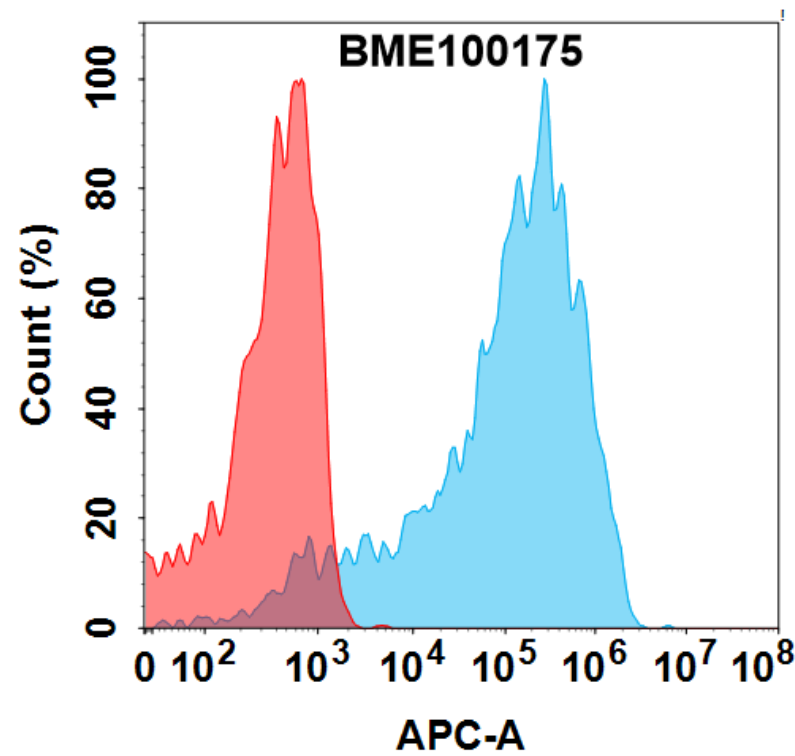


Figure 1. Flow cytometry analysis with 1µg/mL Anti-AXL(mecbotamab biosimilar) mAb (BME100175) on Expi293 cells transfected with Human AXL protein (Blue histogram) or Expi293 transfected with irrelevant protein (Red histogram).

Anti-AXL(mecbotamab biosimilar) mAb ELISA
0.2 µg of Human AXL, His tagged protein per well

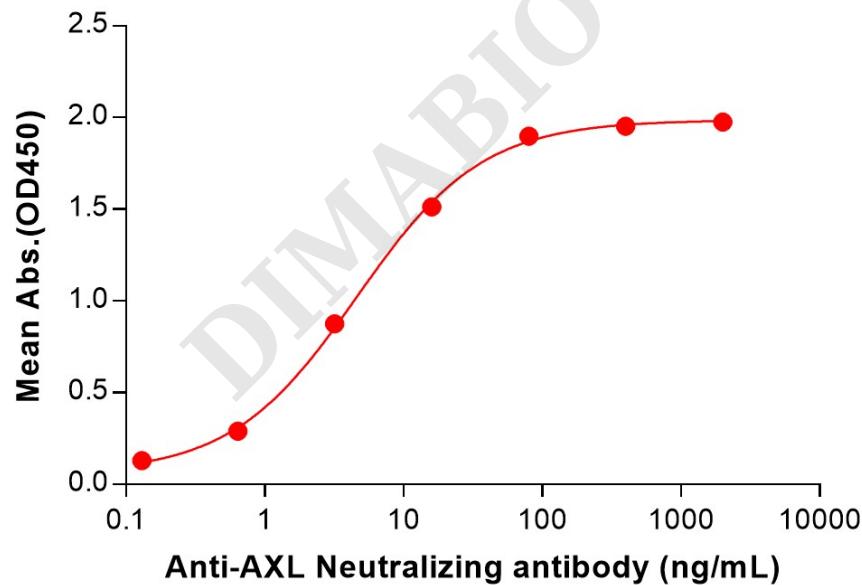


Figure 2. ELISA plate pre-coated by 2 µg/mL (100 µL/well) Human AXL Protein, His Tag (PME100070) can bind Anti-AXL(mecbotamab biosimilar) mAb (BME100175) in a linear range of 0.64–80 ng/mL.

