

PRODUCT INFORMATION

| | |
|------------------------------|---|
| Common Name | JNJ-61610588 |
| Synonyms | VISTA;VSIR;Sisp-1;C10orf54;DD1alpha;Dies1;GI24;PD-1H;PP2135 |
| Applications | ELISA; Flow Cyt |
| Recommended Dilutions | ELISA 1:5000-10000; Flow Cyt 1:100 |
| Formulation & Reconstitution | Lyophilized from sterile PBS, pH 7.4. Normally 5 % – 8% trehalose is added as protectants before lyophilization. Please see Certificate of Analysis for specific instructions of reconstitution. |
| Host Species | Homo sapiens |
| IgG type | IgG1 |
| Reactivity | Human |
| Target | B7-H5 |
| Uniprot ID | Q9H7M9 |
| Description | Anti-B7-H5(onvatilimab biosimilar) mAb |
| Delivery | In Stock |
| Storage & Shipping | Store at -20°C to -80°C for 12 months in lyophilized form. After reconstitution, if not intended for use within a month, aliquot and store at -80°C (Avoid repeated freezing and thawing). Lyophilized proteins are shipped at ambient temperature. |
| Background | Research grade biosimilar. Not for use in therapeutic or diagnostic procedures for humans or animals. |
| Usage | Research use only |

Anti-B7-H5 (onvatilimab biosimilar) mAb ELISA
0.2 µg of Human B7-H5, hFc tagged protein per well

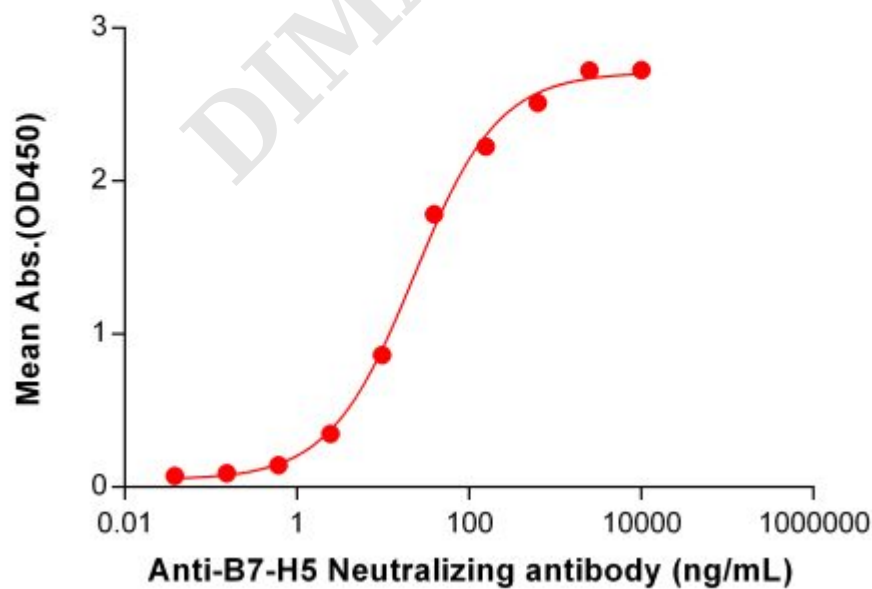


Figure 1. ELISA plate pre-coated by 2 µg/mL (100 µL/well) Human B7-H5 Protein, hFc Tag (PME101041) can bind Anti-B7-H5 Neutralizing antibody (BME100109) in a linear range of 2.44-625.00 ng/mL. In order to specifically detect BME100109, mouse anti-human Fab-specific antibody was used as detection antibody.

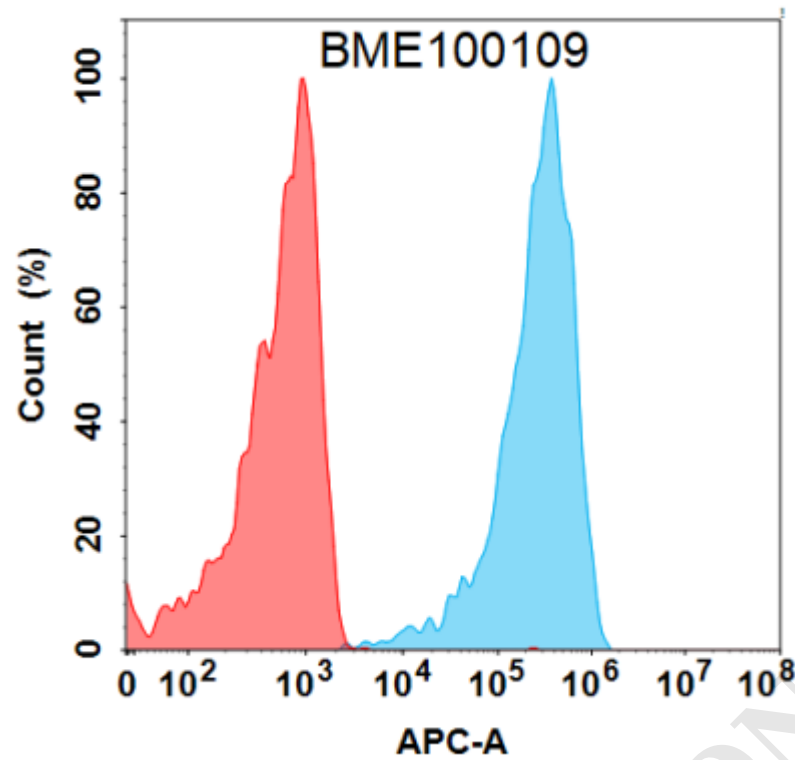


Figure 2. Flow cytometry analysis with 1 µg/mL Anti-B7-H5 (onvatilimab biosimilar) mAb (BME100109) on Expi293 cells transfected with Human B7-H5 protein (Blue histogram) or Expi293 transfected with irrelevant protein (Red histogram).

