

PRODUCT INFORMATION

Common Name	LymphoStat-B, hBlySmAb-1.1
Synonyms	TNFSF13B;BAFF;BLYS;CD257;DTL;TALL1;THANK;TNFSF20;ZTNF4;TALL-1
Applications	ELISA; Flow Cyt
Recommended Dilutions	ELISA 1:5000-10000; Flow Cyt 1:100
Formulation & Reconstitution	Lyophilized from sterile PBS, pH 7.4. Normally 5 % - 8% trehalose is added as protectants before lyophilization. Please see Certificate of Analysis for specific instructions of reconstitution.
Host Species	Homo sapiens
IgG type	IgG1
Reactivity	Human
Target	BAFF
Uniprot ID	Q9Y275
Description	Anti-BAFF (belimumab biosimilar) mAb
Delivery	In Stock
Storage & Shipping	Store at -20°C to -80°C for 12 months in lyophilized form. After reconstitution, if not intended for use within a month, aliquot and store at -80°C (Avoid repeated freezing and thawing). Lyophilized proteins are shipped at ambient temperature.
Background	Research grade biosimilar. Not for use in therapeutic or diagnostic procedures for humans or animals.
Usage	Research use only

Anti-BAFF (belimumab biosimilar) mAb ELISA

0.2 µg of Human BAFF, hFc Tagged protein per well

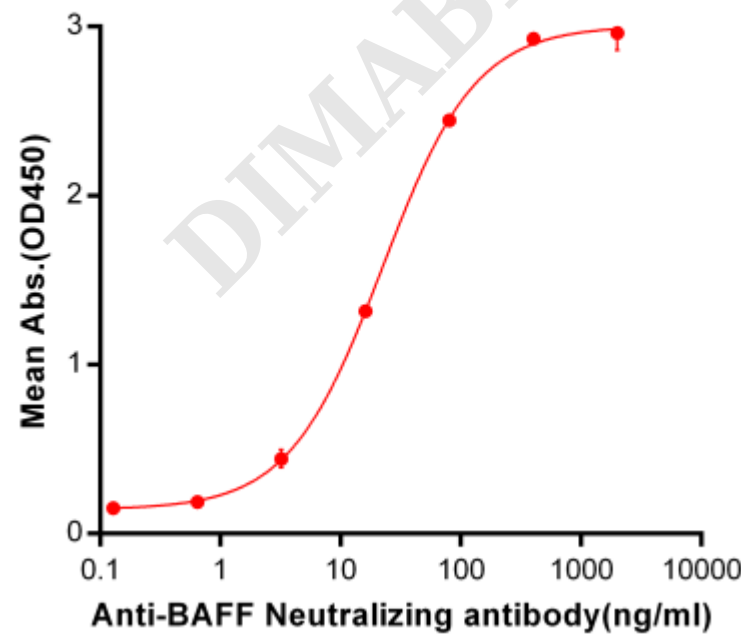


Figure 1. ELISA plate pre-coated by 2 µg/ml (100 µL/well) Human BAFF, hFc tagged protein (PME100043) can bind Anti-BAFF (belimumab biosimilar) (BME100044) in a linear range of 0.12-200 ng/ml in order to specifically detect BME100044.

Address: Biotechnology B7, Biolake No.666
Gaoxin Road, Wuhan, Hubei, China
Telephone: +1 2409940618(USA)
/+86-18062749453(China)
/+86-400-006-0995(China)

Website: www.dimabio.com



anti-human Fab-specific antibody was used as detection antibody.

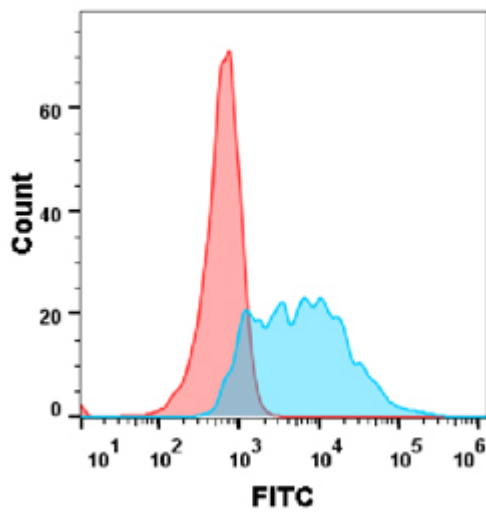


Figure 2. Flow cytometry analysis with Anti-BAFF mAb 1 μ g/ml (belimumab) on Expi293 cells transfected with human BAFF (Blue histogram) or Expi293 transfected with irrelevant protein (Red histogram).

