

PRODUCT INFORMATION

Common Name	LymphoStat-B, hBlySmAb-1.1
Synonyms	TNFSF13B;BAFF;BLYS;CD257;DTL;TALL1;THANK;TNFSF20;ZTNF4;TALL-1
Conjugate	Unconjugated
Applications	ELISA; Flow Cyt
Recommended Dilutions	ELISA 1:5000-10000; Flow Cyt 1:100
Formulation & Reconstitution	Lyophilized from sterile PBS, pH 7.4. Normally 5 % – 8% trehalose is added as protectants before lyophilization. Please see Certificate of Analysis for specific instructions of reconstitution.
Host Species	Homo sapiens
IgG type	Human IgG1 – Lambda2
Reactivity	Human
Target	BAFF
Uniprot ID	Q9Y275
Description	Anti-BAFF (belimumab biosimilar) mAb
Delivery	In Stock
Storage & Shipping	Store at -20°C to -80°C for 12 months in lyophilized form. After reconstitution, if not intended for use within a month, aliquot and store at -80°C (Avoid repeated freezing and thawing). Lyophilized proteins are shipped at ambient temperature.
Background	Research grade biosimilar. Not for use in therapeutic or diagnostic procedures for humans or animals.
Usage	Research use only
DIMA Disclaimer	All DIMA recombinant antibodies are genuinely generated by DIMA Biotech. They are all under patent application. Any protein sequencing or reverse engineering attempt is prohibited. We are actively scrutinizing all patent application to ensure no IP infringement.



Anti-BAFF (belimumab biosimilar) mAb ELISA

0.2 µg of Human BAFF, hFc Tagged protein per well

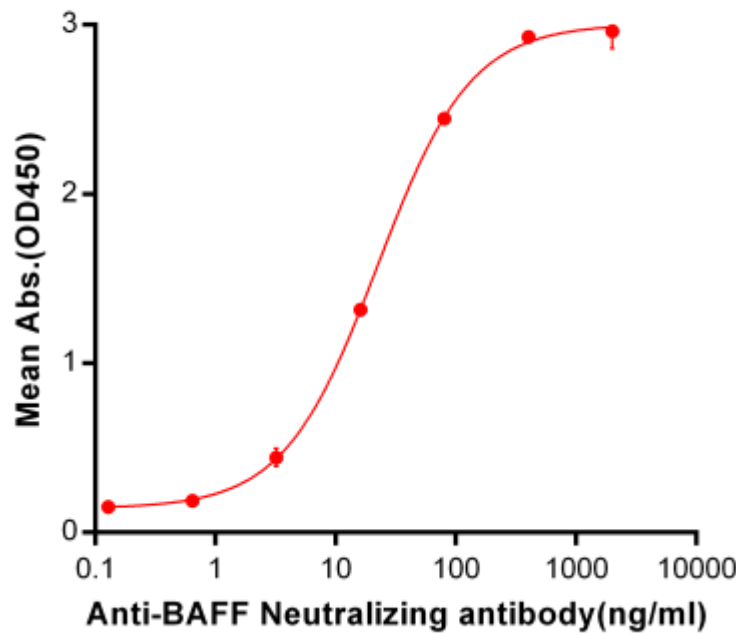


Figure 1. ELISA plate pre-coated by 2 µg/ml (100 µL/well) Human BAFF, hFc tagged protein (PME100043) can bind Anti-BAFF Neutralizing antibody (BME100044) in a linear range of 3.2-400 ng/ml. In order to specifically detect BME100044, mouse anti-human Fab-specific antibody was used as detection antibody.

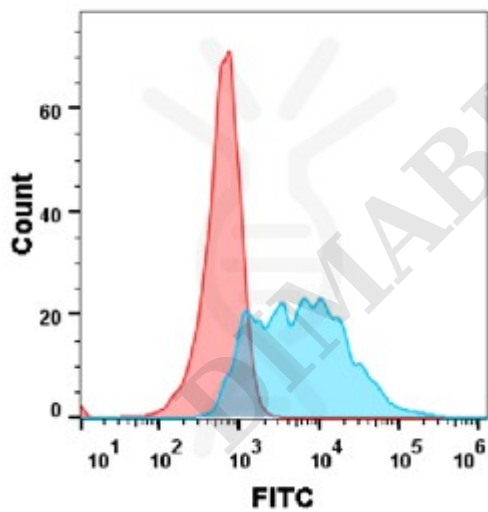


Figure 2. Flow cytometry analysis with Anti-BAFF mAb 1 µg/ml (belimumab) on Expi293 cells transfected with human BAFF (Blue histogram) or Expi293 transfected with irrelevant protein (Red histogram).

