

PRODUCT INFORMATION

Clone ID	DM143
Target	BAFF-R
Synonyms	BAFFR; TNFRSF13C; BAFF-R; BROMIX; CD268; CVID4; prolixin
Host Species	Rabbit
Description	Anti-BAFF-R antibody(DM143); Rabbit mAb
Delivery	In Stock
Uniprot ID	Q96RJ3
IgG type	Rabbit IgG
Clonality	Monoclonal
Reactivity	Human
Applications	ELISA; Flow Cyt; IHC
Recommended Dilutions	ELISA 1:5000-10000; Flow Cyt 1:100; IHC 1:100
Purification	Purified from cell culture supernatant by affinity chromatography
Formulation & Reconstitution	Lyophilized from sterile PBS, pH 7.4. Normally 5 % - 8% trehalose is added as protectants before lyophilization. Please see Certificate of Analysis for specific instructions of reconstitution.
Storage & Shipping	Store at -20°C to -80°C for 12 months in lyophilized form. After reconstitution, if not intended for use within a month, aliquot and store at -80°C (Avoid repeated freezing and thawing). Lyophilized proteins are shipped at ambient temperature.
Background	B cell-activating factor (BAFF) enhances B-cell survival in vitro and is a regulator of the peripheral B-cell population. Overexpression of Baff in mice results in mature B-cell hyperplasia and symptoms of systemic lupus erythematosus (SLE). Also; some SLE patients have increased levels of BAFF in serum. Therefore; it has been proposed that abnormally high levels of BAFF may contribute to the pathogenesis of autoimmune diseases by enhancing the survival of autoreactive B cells. The protein encoded by this gene is a receptor for BAFF and is a type III transmembrane protein containing a single extracellular cysteine-rich domain. It is thought that this receptor is the principal receptor required for BAFF-mediated mature B-cell survival.
Usage	Research use only
Conjugate	Unconjugated
DIMA Disclaimer	All DIMA recombinant antibodies are genuinely generated by DIMA Biotech. They are all under patent application. Any protein sequencing or reverse engineering attempt is prohibited. We are actively scrutinizing all patent application to ensure no IP infringement.



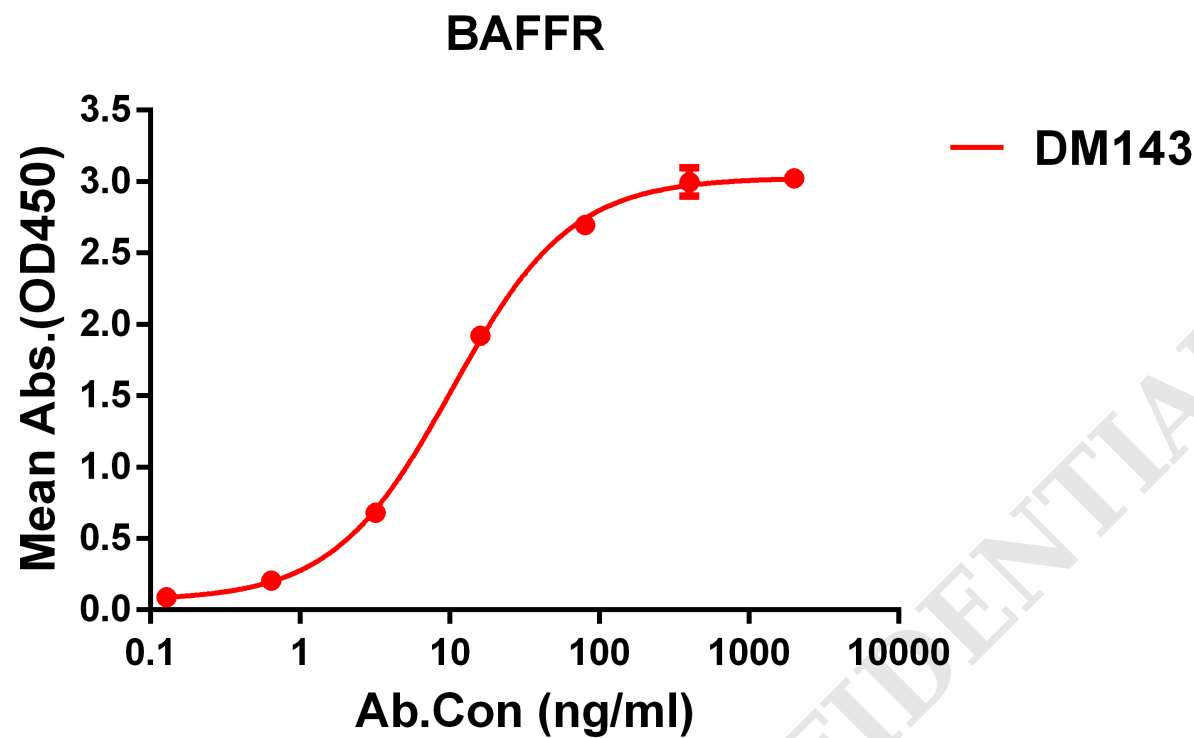


Figure 1. ELISA plate pre-coated by 1 μ g/ml (100 μ l/well) Human BAFFR protein, mFc tagged protein PME100044 can bind Rabbit anti-BAFFR monoclonal antibody (clone: DM143) in a linear range of 0.8-50

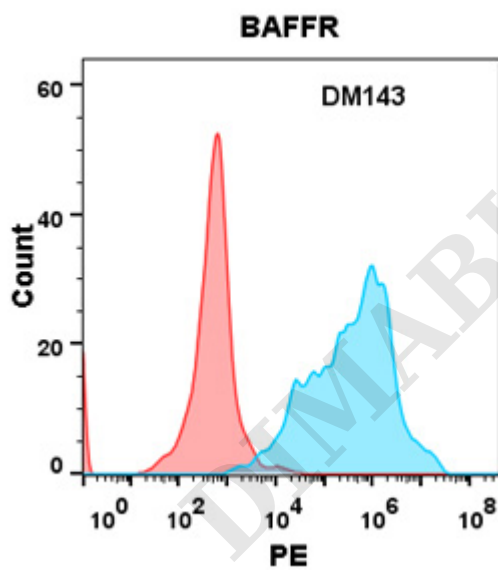


Figure 2. Flow cytometry analysis with Anti-BAFFR (DM143) on HEK293 cells transfected with human BAFFR (Blue histogram) or HEK293 transfected with irrelevant protein (Red histogram).



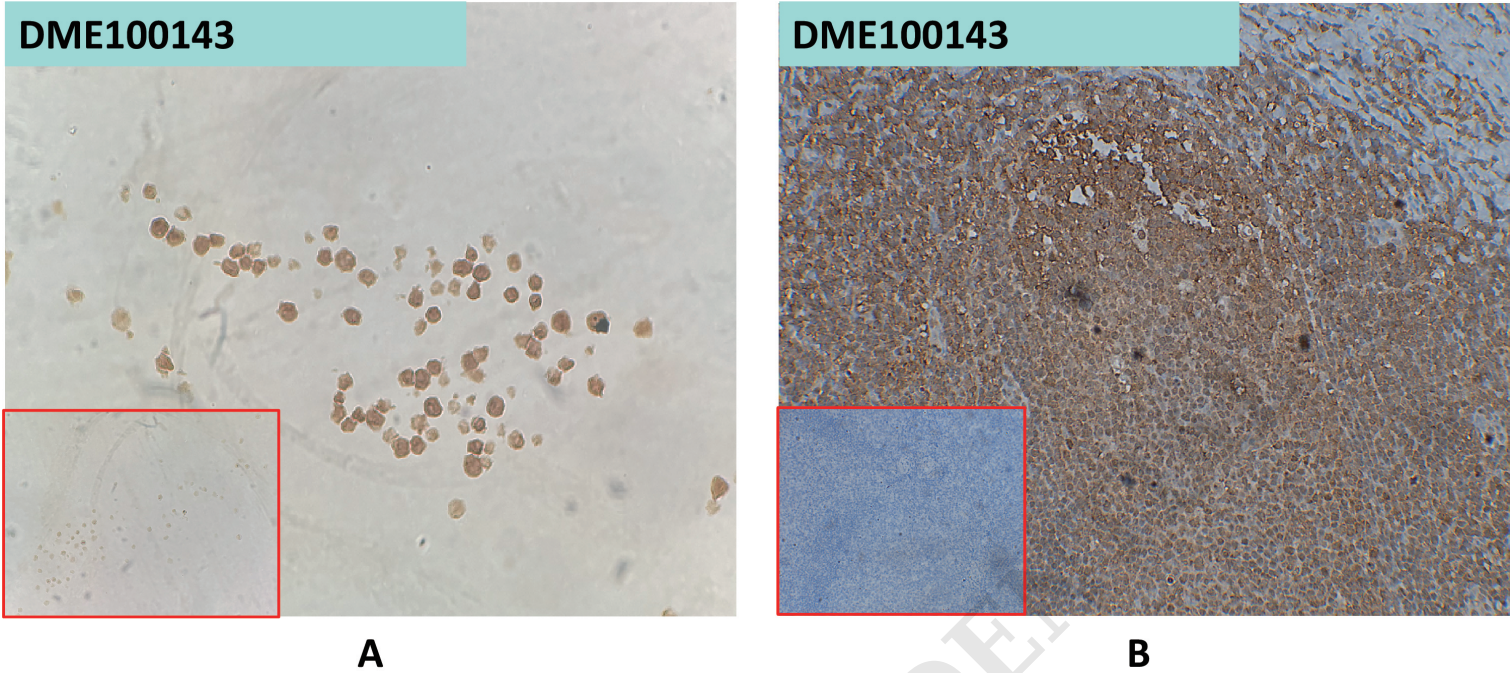


Figure 3. A. DME100143 at 10µg/ml staining BAFF-R in Raji cells by IHC (SKU# DME100143);B. DME100143 at 10µg/ml staining BAFF-R in human tonsil tissue by IHC (SKU# DME100143)

