

PRODUCT INFORMATION

Common Name	6CBV,sAB24
Conjugate	Unconjugated
Synonyms	cybC
Applications	Flow Cyt
Endotoxin	Less than 1.0 EU/ μ g by the LAL method. For <1 EU/mg requirements, please contact us for customization.
Recommended Dilutions	Flow Cyt 1:100
Formulation & Reconstitution	Lyophilized from sterile PBS, pH 7.4. Normally 5% - 8% trehalose is added as protectants before lyophilization. Please see Certificate of Analysis for specific instructions of reconstitution.
Host Species	Homo sapiens
IgG type	Human IgG1 Fab - Kappa
Reactivity	Human
Target	BRIL
Uniprot ID	P0ABE7
Description	Anti-BRIL(BAG2 biosimilar) Fab, His Tag
Delivery	In Stock
Storage&Shipping	Store at -20°C to -80°C for 12 months in lyophilized form. After reconstitution, if not intended for use within a month, aliquot and store at -80°C (Avoid repeated freezing and thawing). Lyophilized antibodies are shipped at ambient temperature.
Sterility	Products are supplied non-sterile. For cell culture applications, dilute in appropriate medium and sterile-filter (0.22 μ m) prior to use.
Background	Research grade biosimilar. Not for use in therapeutic or diagnostic procedures for humans or animals.
Usage	Research use only



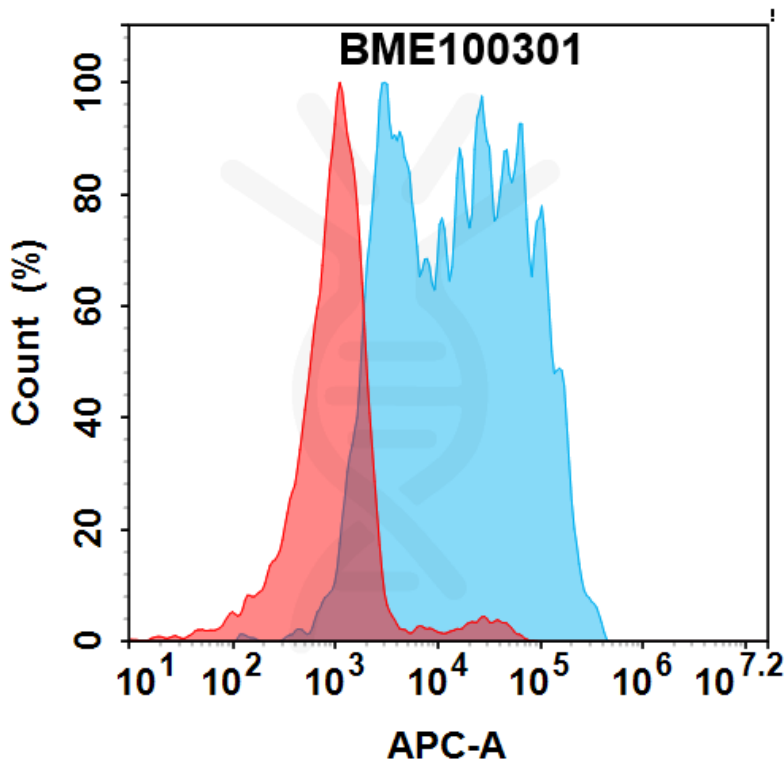


Figure 1. Flow cytometry analysis with 7.5 $\mu\text{g/ml}$ Anti-BRIL(BAG2 biosimilar) Fab, His Tag (BME100301) on HEK293 cells transfected with Human BRIL protein (Blue histogram) and HEK293 transfected with irrelevant protein (Red histogram). In order to specifically detect BME100301, Alexa Fluor™ 647 Conjugated Goat anti-Human IgG (H+L) was used as detection antibody.

Anti-BRIL(BAG2 biosimilar) Fab, His Tagged ELISA

0.2 μg of Anti-BRIL(BAG2 biosimilar) Fab, His Tag per well

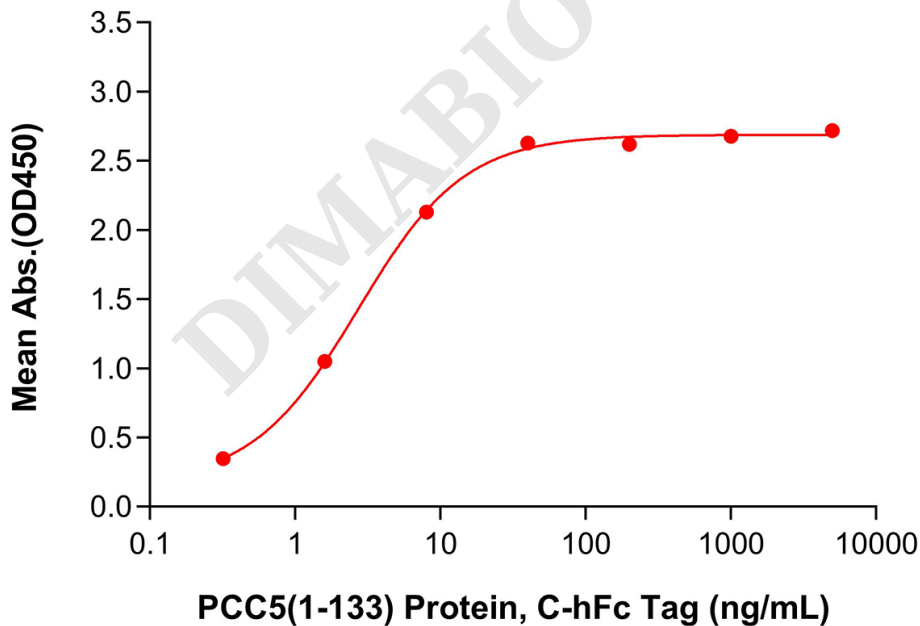


Figure 2. ELISA plate pre-coated by 2 $\mu\text{g/ml}$ (100 μL /well) Anti-BRIL(BAG2 biosimilar) Fab, His Tag (BME100301) can bind PCC5(1-133) Protein, hFc Tag in a linear range of 1.6-8.0 ng/mL. In order to specifically detect BME100301, HRP Conjugated Goat anti-Human IgG Fc was used as detection antibody.

