

PRODUCT INFORMATION

Clone ID	3G2
Target	BTN3A2
Synonyms	BT3.2;BTF4;BTN3.2;CD277
Host Species	Rabbit
Description	Anti-BTN3A2 antibody(3G2); IgG1 Chimeric mAb
Delivery	In Stock
Uniprot ID	P78410
IgG type	Rabbit/Human Fc chimeric IgG1
Clonality	Monoclonal
Reactivity	Human
Applications	Flow Cyt
Recommended Dilutions	Flow Cyt 1/100
Purification	Purified from cell culture supernatant by affinity chromatography
Endotoxin	Less than 1.0 EU/μg by the LAL method. For <1 EU/mg requirements, please contact us for customization.
Formulation & Reconstitution	Lyophilized from sterile PBS, pH 7.4. Normally 5 % - 8% trehalose is added as protectants before lyophilization. Please see Certificate of Analysis for specific instructions of reconstitution.
Storage&Shipping	Store at -20°C to -80°C for 12 months in lyophilized form. After reconstitution, if not intended for use within a month, aliquot and store at -80°C (Avoid repeated freezing and thawing). Lyophilized proteins are shipped at ambient temperature.
Sterility	Products are supplied non-sterile. For cell culture applications, dilute in appropriate medium and sterile-filter (0.22 μm) prior to use.
Background	This gene encodes a member of the immunoglobulin superfamily, which resides in the juxta-telomeric region of the major histocompatibility class 1 locus and is clustered with the other family members on chromosome 6. The encoded protein may be involved in the adaptive immune response. Alternatively spliced transcript variants encoding different isoforms have been found for this gene. [provided by RefSeq, Jun 2013]
Usage	Research use only
Conjugate	Unconjugated
DIMA Disclaimer	All DIMA recombinant antibodies are genuinely generated by DIMA Biotech. They are all under patent application. Any protein sequencing or reverse engineering attempt is prohibited. We are actively scr



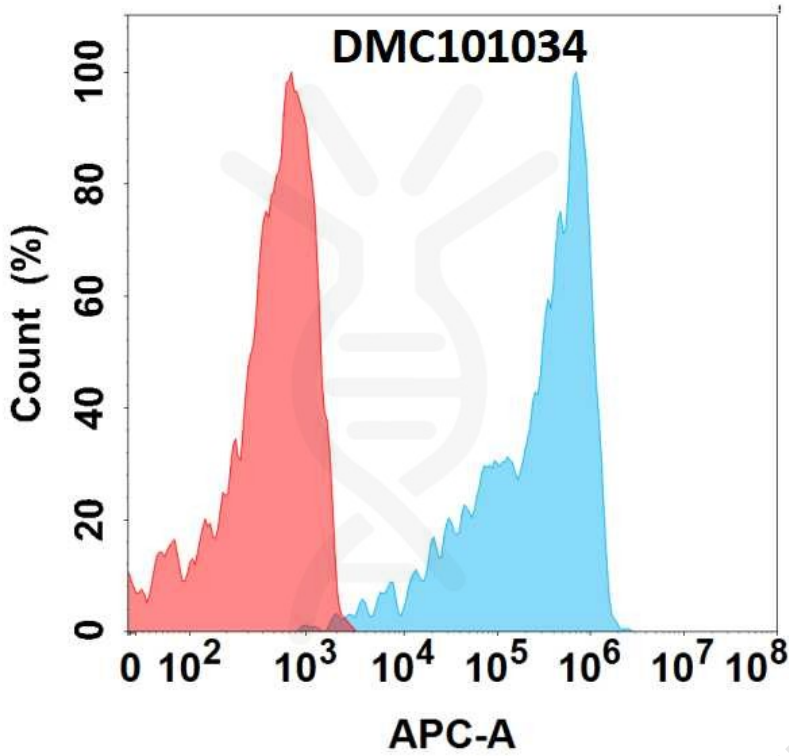


Figure 1. Flow cytometry analysis with Anti-BTN3A2 (3G2) mAb on HEK293 cells transfected with human BTN3A2 (Blue histogram) or HEK293 transfected with irrelevant protein (Red histogram).

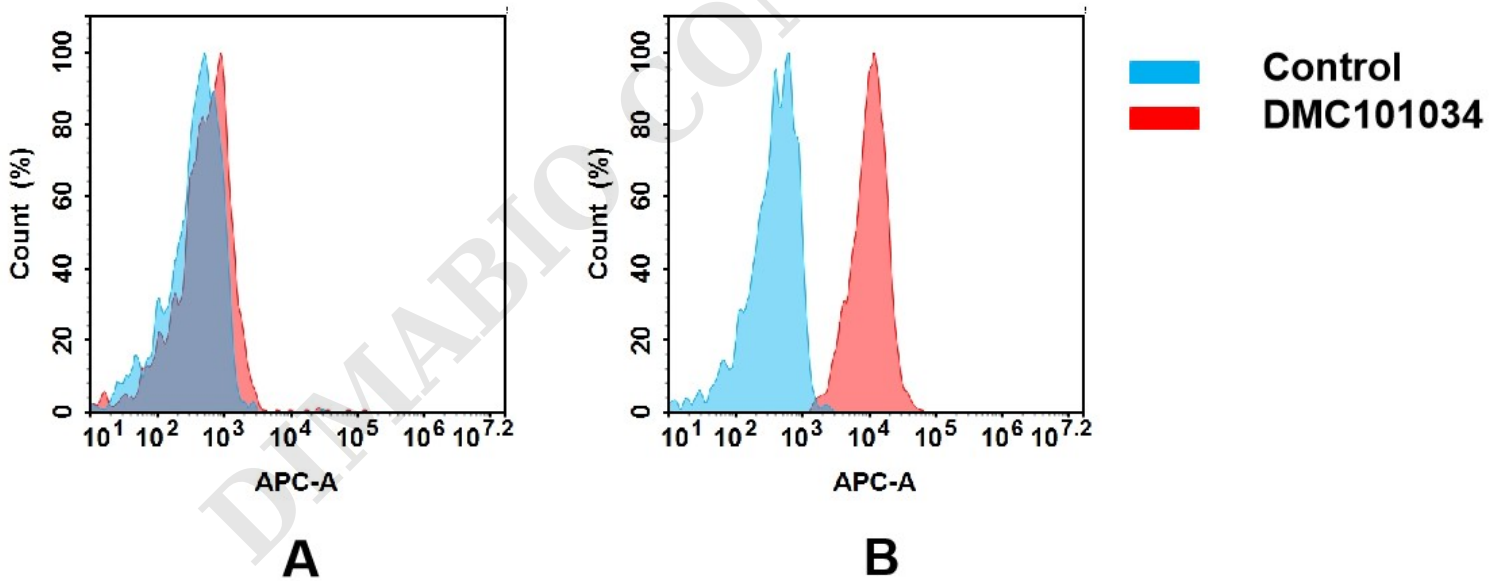


Figure 2. Flow cytometry analysis of antigen binding of anti-human BTN3A2 mAb(DMC101034).
 (A) DMC101034 does not bind to MCF-7 cells that do not express BTN3A2.
 (B) A clear peak shift of DMC101034 was seen compared to the control when incubated with BTN3A2-expressing 8226 cells, indicating strong binding of DMC101034 to BTN3A2. Antibodies were incubated at 5 µg/mL.



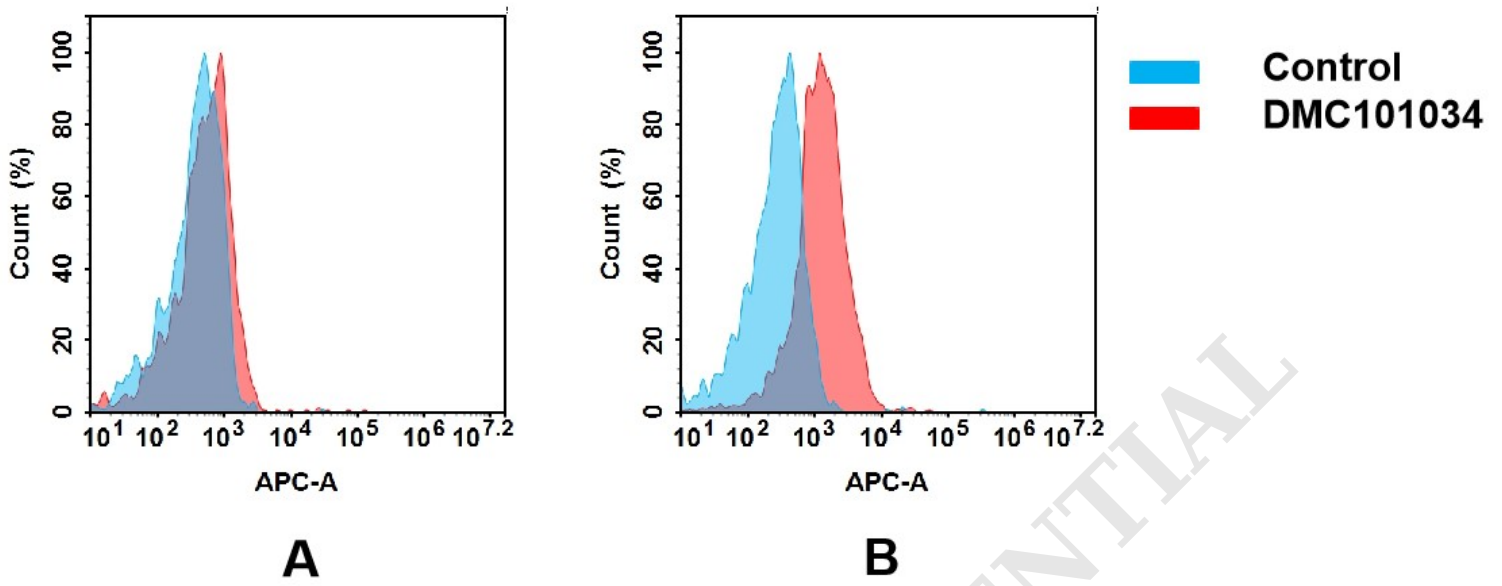


Figure 3. Flow cytometry analysis of antigen binding of anti-human BTN3A2 mAb(DMC101034).

(A) DMC101034 does not bind to MCF-7 cells that do not express BTN3A2.

(B) A clear peak shift of DMC101034 was seen compared to the control when incubated with BTN3A2-expressing Raji cells, indicating strong binding of DMC101034 to BTN3A2. Antibodies were incubated at 5 μ g/mL.

