

PRODUCT INFORMATION

Common Name	MLN-1202, MLN1202, anti-CCR2, hu1D9
Synonyms	CC-CCR-2;CCR2A;CCR2B;CD192;CKR2;CKR2A;CKR2B;CMKBR2;MCP-1-R
Applications	Flow Cyt
Recommended Dilutions	Flow Cyt 1:100
Formulation & Reconstitution	Lyophilized from sterile PBS, pH 7.4. Normally 5 % – 8% trehalose is added as protectants before lyophilization. Please see Certificate of Analysis for specific instructions of reconstitution.
Host Species	Humanized
IgG type	IgG1
Reactivity	Human
Target	CCR2
Uniprot ID	P41597
Description	Anti-CCR2(plozalizumab biosimilar) mAb
Delivery	In Stock
Storage & Shipping	Store at -20°C to -80°C for 12 months in lyophilized form. After reconstitution, if not intended for use within a month, aliquot and store at -80°C (Avoid repeated freezing and thawing). Lyophilized proteins are shipped at ambient temperature.
Background	Research grade biosimilar. Not for use in therapeutic or diagnostic procedures for humans or animals.
Usage	Research use only

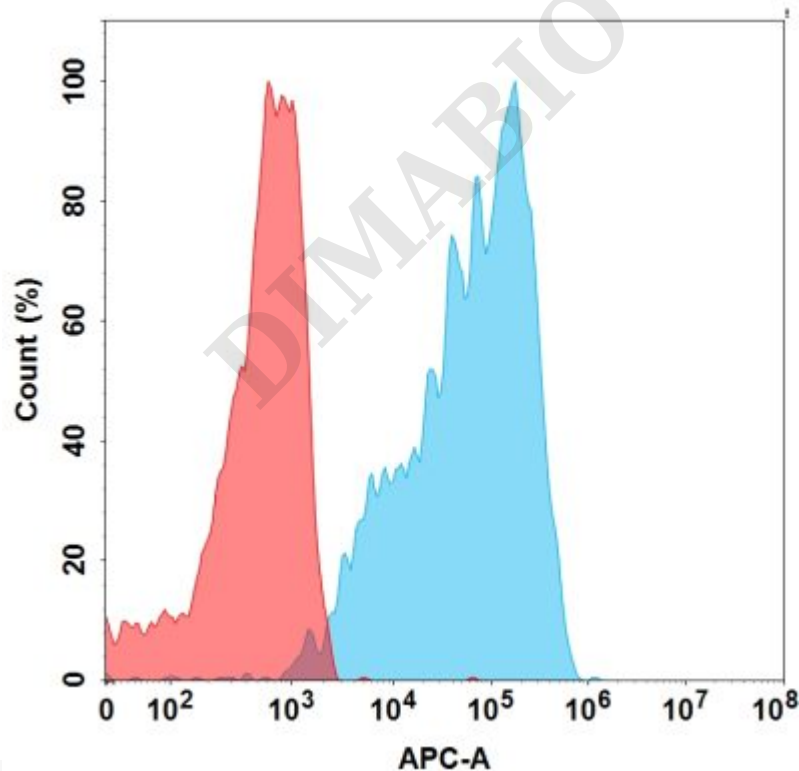


Figure 1. Flow cytometry analysis with 1 µg/mL Anti-CCR2 (plozalizumab biosimilar) mAb (BME100087) on Expi293 cells transfected with human CCR2 protein (Blue histogram) or Expi293 cells transfected with irrelevant protein (Red histogram).
DIMA BIO CONFIDENTIAL



DIMABIO CONFIDENTIAL

