

PRODUCT INFORMATION

Common Name	LM-108, LM108
Conjugate	Unconjugated
Synonyms	CKRL1, CMKBR8, CMKBRL2, CDw198, C-C CKR-8, CC-CKR-8, CCR-8, TER1, GPRCY6
Applications	ELISA, Flow Cyt
Recommended Dilutions	ELISA 1:5000-10000, Flow Cyt 1:100
Formulation & Reconstitution	Lyophilized from sterile PBS, pH 7.4. Normally 5 % - 8% trehalose is added as protectants before lyophilization. Please see Certificate of Analysis for specific instructions of reconstitution.
Host Species	Chimeric
IgG type	Human IgG1(S239D,I332E,E356D,M358L) - kappa
Reactivity	Human
Target	CCR8
Uniprot ID	P51685
Description	Anti-CCR8(cafelkibart biosimilar) mAb
Delivery	In Stock
Storage & Shipping	Store at -20°C to -80°C for 12 months in lyophilized form. After reconstitution, if not intended for use within a month, aliquot and store at -80°C (Avoid repeated freezing and thawing). Lyophilized antibodies are shipped at ambient temperature.
Background	Research grade biosimilar. Not for use in therapeutic or diagnostic procedures for humans or animals.
Usage	Research use only



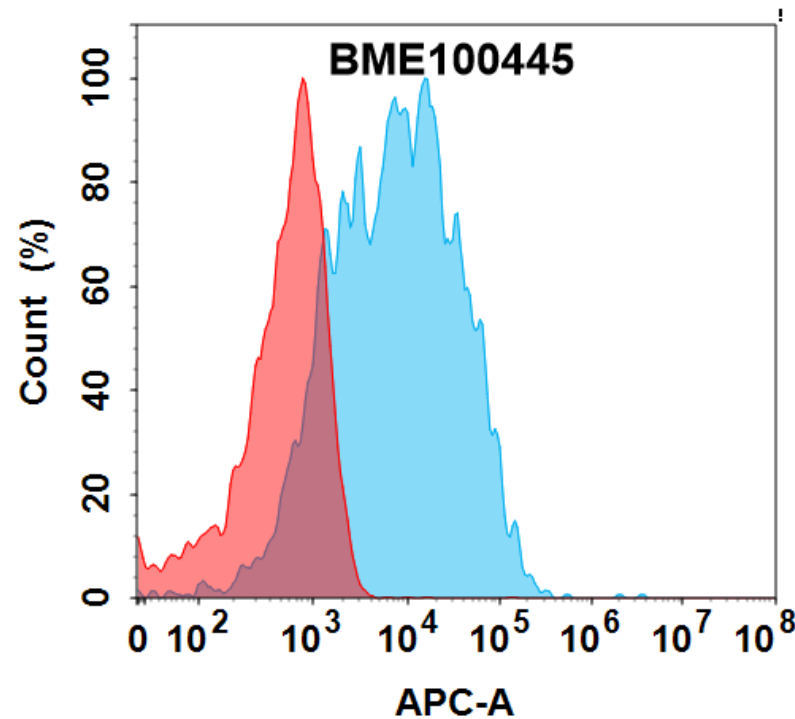


Figure 1. Flow cytometry analysis with 0.5  $\mu$ g/mL Anti-CCR8(cafelkibart biosimilar) mAb (BME100445) on HEK293 cells transfected with Human CCR8 and CCL1 protein (Blue histogram) or HEK293 transfected with Human CCL1 protein (Red histogram).

**Anti-CCR8(cafelkibart biosimilar) mAb ELISA**

0.2  $\mu$ g of Human CCR8, hFc tagged protein per well

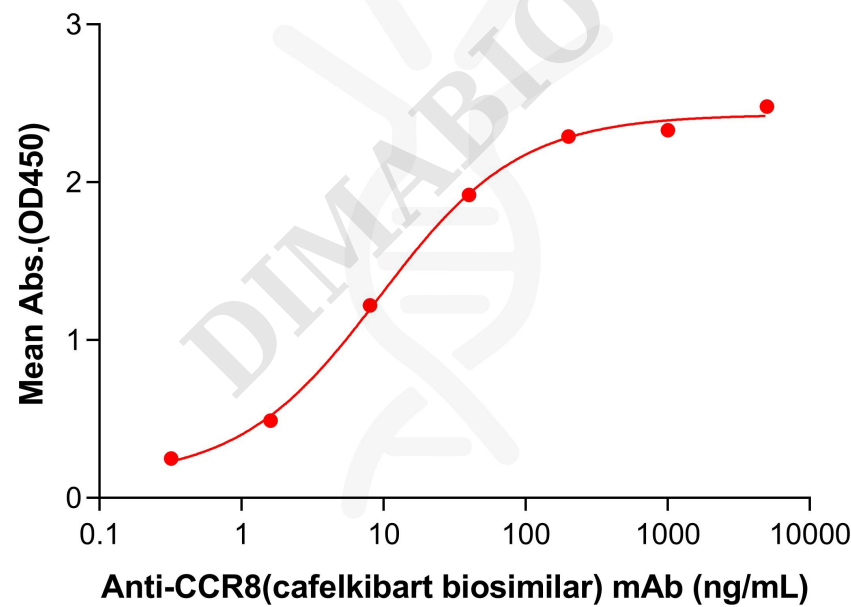


Figure 2. ELISA plate pre-coated by 2  $\mu$ g/mL (100  $\mu$ L/well) Human CCR8 Protein, hFc Tag (PME101091) can bind Anti-CCR8(cafelkibart biosimilar) mAb (BME100445) in a linear range of 1.6–40 ng/mL. In order to specifically detect BME100445, mouse anti-human Fab-specific antibody was used as detection antibody.



**Anti-CCR8(cafelkibart biosimilar) mAb ELISA**

0.2 µg of Mouse CCR8, hFc tagged protein per well

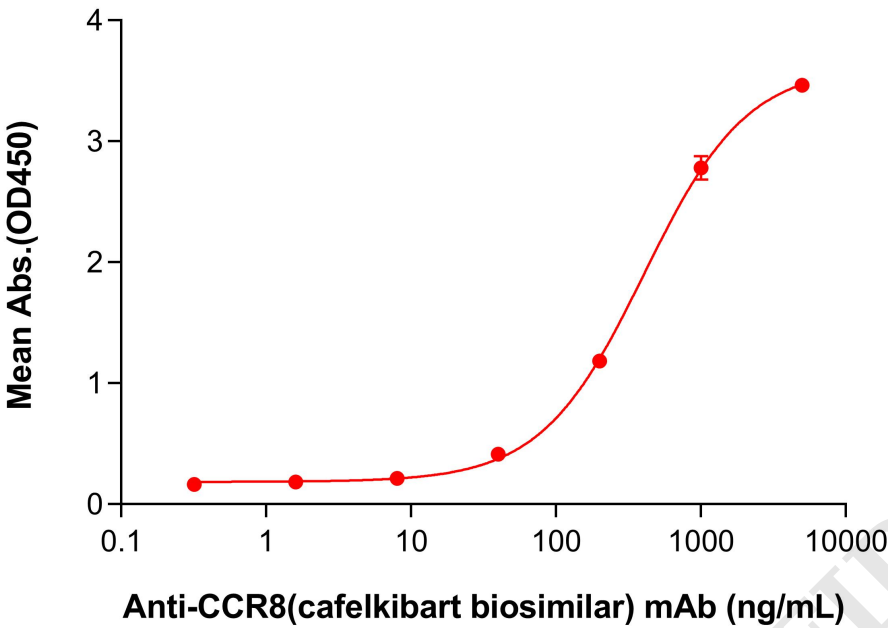


Figure 3. ELISA plate pre-coated by 2 µg/mL (100 µL/well) Mouse CCR8 Protein, hFc Tag (PME-M100034) can bind Anti-CCR8(cafelkibart biosimilar) mAb (BME100445) in a linear range of 200–1000 ng/mL. In order to specifically detect BME100445, mouse anti-human Fab-specific antibody was used as detection antibody.

