

PRODUCT INFORMATION

Clone ID	1B2
Target	CD106
Synonyms	VCAM1;V-CAM 1;VCAM-1;INCAM-100
Host Species	Rabbit
Description	Anti-CD106 antibody(1B2), IgG1 Chimeric mAb
Delivery	In Stock
Uniprot ID	P19320
IgG type	Rabbit/Human Fc chimeric IgG1
Clonality	Monoclonal
Reactivity	Human
Applications	Flow Cyt
Recommended Dilutions	Flow Cyt 1/100
Purification	Purified from cell culture supernatant by affinity chromatography
Endotoxin	Less than 1.0 EU/μg by the LAL method. For <1 EU/mg requirements, please contact us for customization.
Formulation & Reconstitution	Powder
Storage&Shipping	Store at -20°C to -80°C for 12 months in lyophilized form. After reconstitution, if not intended for use within a month, aliquot and store at -80°C (Avoid repeated freezing and thawing).
Sterility	Products are supplied non-sterile. For cell culture applications, dilute in appropriate medium and sterile-filter (0.22 μm) prior to use.
Background	This gene is a member of the Ig superfamily and encodes a cell surface sialoglycoprotein expressed by cytokine-activated endothelium. This type I membrane protein mediates leukocyte-endothelial cell adhesion and signal transduction, and may play a role in the development of arteriosclerosis and rheumatoid arthritis. Three alternatively spliced transcripts encoding different isoforms have been described for this gene. [provided by RefSeq, Dec 2010]
Usage	Research use only
Conjugate	Unconjugated



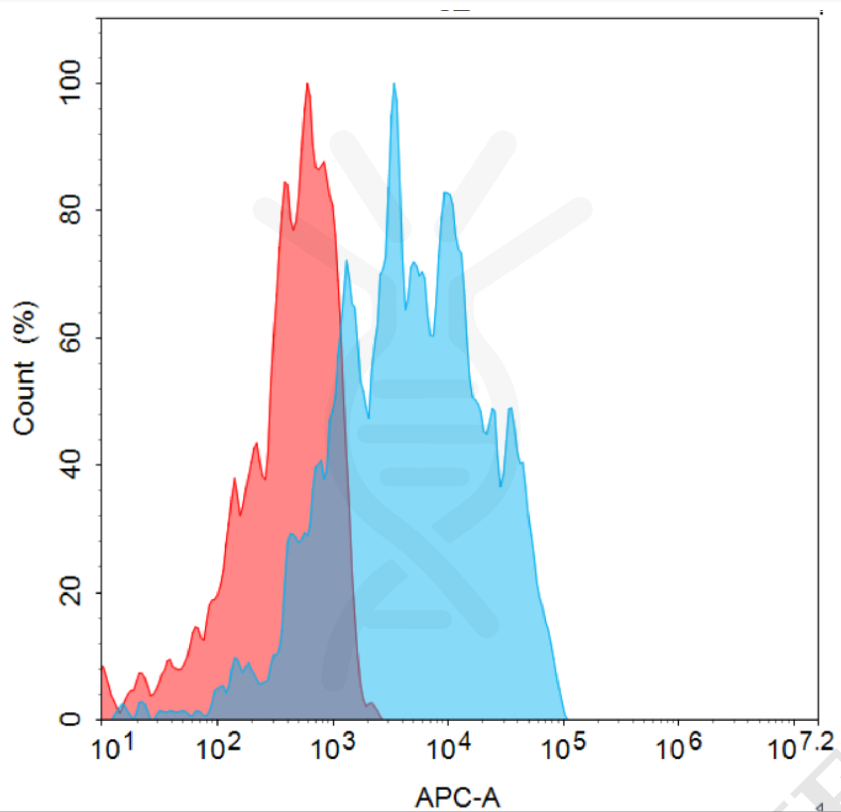


Figure 1. Flow cytometry analysis with 1µg/mL Anti-CD106 antibody(1B2) mAb on HEK293 cells transfected with human CD106 (Blue histogram) or HEK293 transfected with irrelevant protein (Red histogram).

