

PRODUCT INFORMATION

Clone ID	DM33
Target	CD123
Synonyms	IL3R; IL3RA; IL-3Ra; IL-3R-alpha; IL3RAY; IL3RX; IL3RY; CD123 antigen; CD123; hIL3Ra; hIL-3Ra; MGC34174; IL-3 R alpha
Host Species	Rabbit
Description	Anti-CD123 antibody(DM33); Rabbit mAb
Delivery	In Stock
Uniprot ID	P26951
IgG type	Rabbit IgG
Clonality	Monoclonal
Reactivity	Human
Applications	ELISA; Flow Cyt
Recommended Dilutions	ELISA 1:5000-10000; Flow Cyt 1:100
Purification	Purified from cell culture supernatant by affinity chromatography
Endotoxin	Less than 1.0 EU/μg by the LAL method. For <1 EU/mg requirements, please contact us for customization.
Formulation & Reconstitution	Lyophilized from sterile PBS, pH 7.4. Normally 5 % - 8% trehalose is added as protectants before lyophilization. Please see Certificate of Analysis for specific instructions of reconstitution.
Storage&Shipping	Store at -20°C to -80°C for 12 months in lyophilized form. After reconstitution, if not intended for use within a month, aliquot and store at -80°C (Avoid repeated freezing and thawing). Lyophilized proteins are shipped at ambient temperature.
Background	Interleukin 3 receptor alpha (low affinity) (IL3RA); also known as CD123 (Cluster of Differentiation 123) is a 70-kD glycoprotein member of the hematopoietin receptor superfamily. This protein associates with a beta subunit common to the receptors for IL-??
Usage	Research use only
Conjugate	Unconjugated
DIMA Disclaimer	All DIMA recombinant antibodies are genuinely generated by DIMA Biotech. They are all under patent application. Any protein sequencing or reverse engineering attempt is prohibited. We are actively scr



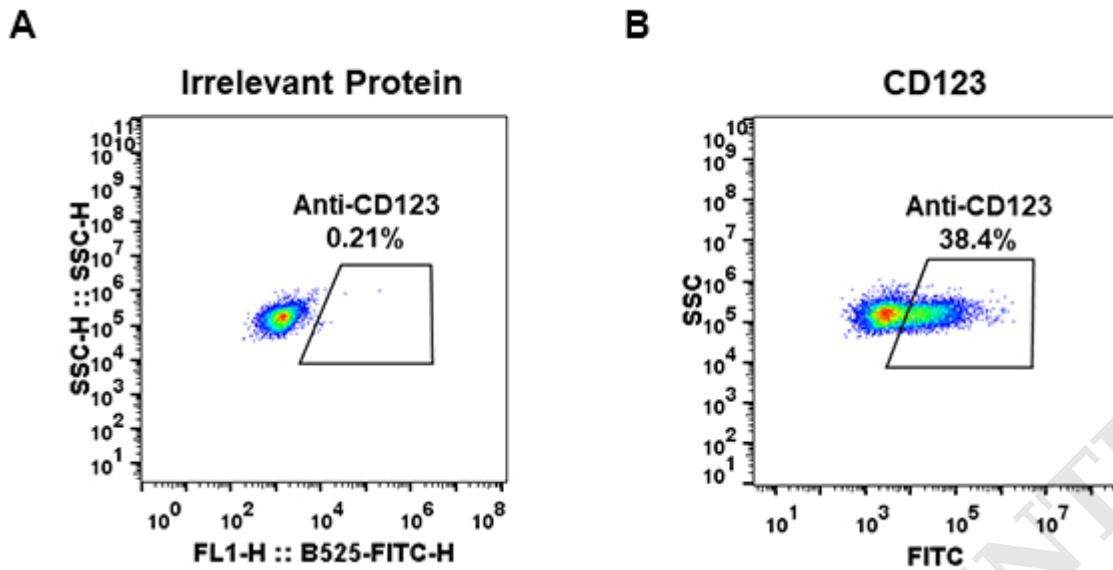


Figure 1. HEK293 cell line transfected with irrelevant protein (left) and human CD123(right) were surface stained with Rabbit anti-CD123 monoclonal antibody $1\mu\text{g/ml}$ (clone: DM33) followed by Alexa 488-conjugated anti-rabbit IgG secondary antibody.

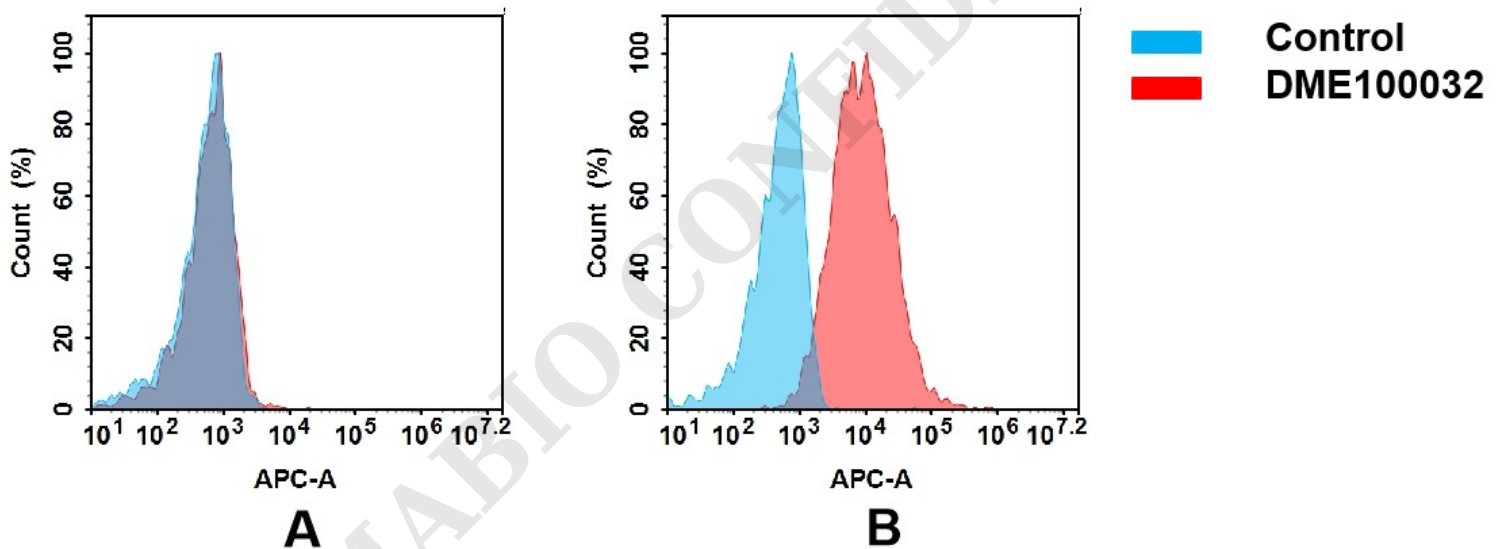


Figure 2. Flow cytometry analysis of antigen binding of rabbit anti-human CD123 mAb(DME100032).

(A) DME100032 does not bind to CHO-S cells that do not express CD123.

(B) A clear peak shift of DME100032 was seen compared to the control when incubated with CD123-expressing THP-1 cells, indicating strong binding of DME100032 to CD123. Antibodies were incubated at $5\mu\text{g/mL}$.

