

PRODUCT INFORMATION

|                              |   |
|------------------------------|---|
| Common Name                  | GA101, RG7159, RO5072759, afutuzumab  |
| Synonyms                     | B1;Bp35;MS4A1;CVID5;LEU-16;MS4A1;S7   |
| Conjugate                    | Unconjugated  |
| Applications                 | Flow Cyt  |
| Recommended Dilutions        | Flow Cyt 1:100  |
| Formulation & Reconstitution | Lyophilized from sterile PBS, pH 7.4. Normally 5 % - 8% trehalose is added as protectants before lyophilization. Please see Certificate of Analysis for specific instructions of reconstitution.  |
| Host Species                 | Humanized   |
| IgG type                     | Human IgG1(E356D,M358L) - kappa   |
| Reactivity                   | Human   |
| Target                       | CD20  |
| Uniprot ID                   | P11836  |
| Description                  | Anti-CD20 (obinutuzumab biosimilar) mAb   |
| Delivery                     | In Stock  |
| Storage&Shipping             | Store at -20°C to -80°C for 12 months in lyophilized form. After reconstitution, if not intended for use within a month, aliquot and store at -80°C (Avoid repeated freezing and thawing). Lyophilized proteins are shipped at ambient temperature. |
| Background                   | Research grade biosimilar. Not for use in therapeutic or diagnostic procedures for humans or animals.   |
| Usage                        | Research use only   |



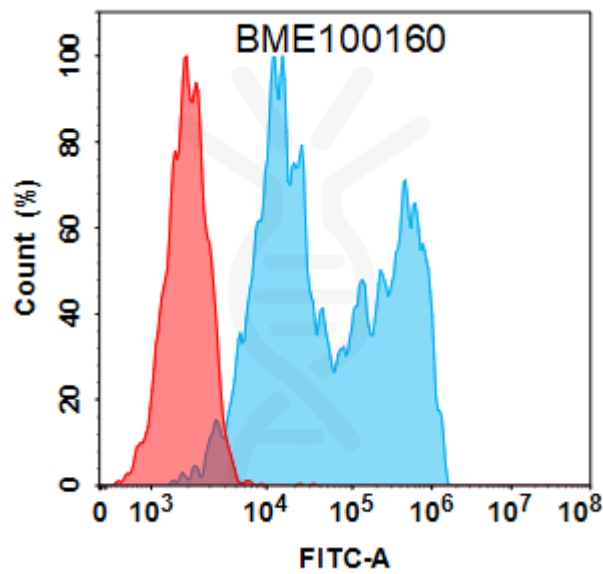


Figure 1. Flow cytometry analysis with 2 µg/mL Anti-CD20 (obinutuzumab biosimilar) mAb (BME100160) on HEK293 cells transfected with Human CD20 protein (Blue histogram) or HEK293 transfected with irrelevant protein (Red histogram).

