

PRODUCT INFORMATION

Common Name	BT 5/9, SAND 26, SAND-26, SAND26
Conjugate	Unconjugated
Synonyms	ADABP;ADCP2;CD26;DPPIV;TP103
Applications	Flow Cyt
Recommended Dilutions	Flow Cyt 1:100
Formulation & Reconstitution	Lyophilized from sterile PBS, pH 7.4. Normally 5 % - 8% trehalose is added as protectants before lyophilization. Please see Certificate of Analysis for specific instructions of reconstitution.
Host Species	Mus musculus
IgG type	Mouse IgG2b - Kappa
Reactivity	Human
Target	CD26
Uniprot ID	P27487
Description	Anti-CD26 (begelomab biosimilar) mAb
Delivery	In Stock
Storage & Shipping	Store at -20°C to -80°C for 12 months in lyophilized form. After reconstitution, if not intended for use within a month, aliquot and store at -80°C (Avoid repeated freezing and thawing). Lyophilized proteins are shipped at ambient temperature.
Background	Research grade biosimilar. Not for use in therapeutic or diagnostic procedures for humans or animals.
Usage	Research use only
DIMA Disclaimer	All DIMA recombinant antibodies are genuinely generated by DIMA Biotech. They are all under patent application. Any protein sequencing or reverse engineering attempt is prohibited. We are actively scrutinizing all patent application to ensure no IP infringement.



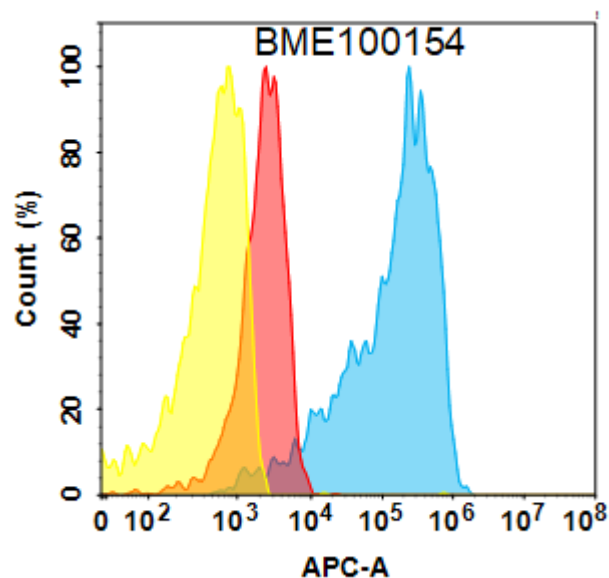


Figure 1. CD26 protein is highly expressed on the surface of Expi293 cell membrane. Flow cytometry analysis with 1 μ g/mL Anti-CD26 (begelomab biosimilar) mAb (BME100154) on Expi293 cells transfected with Human CD26 protein (Blue histogram) or Expi293 transfected with irrelevant protein (Red histogram), and Isotype antibody on Expi293 transfected with irrelevant protein (Orange histogram)

