

PRODUCT INFORMATION

|                              |   |
|------------------------------|---|
| Common Name                  | 1F5, CDX-1127   |
| Synonyms                     | CD27;TNFRSF7;S152;T14;Tp55  |
| Conjugate                    | Unconjugated  |
| Applications                 | ELISA; Flow Cyt   |
| Recommended Dilutions        | ELISA 1:5000-10000; Flow Cyt 1:100  |
| Formulation & Reconstitution | Lyophilized from sterile PBS, pH 7.4. Normally 5 % - 8% trehalose is added as protectants before lyophilization. Please see Certificate of Analysis for specific instructions of reconstitution.  |
| Host Species                 | Homo sapiens  |
| IgG type                     | Human IgG1 - kappa  |
| Reactivity                   | Human   |
| Target                       | CD27  |
| Uniprot ID                   | P26842  |
| Description                  | Anti-CD27 (varlilumab biosimilar) mAb   |
| Delivery                     | In Stock  |
| Storage&Shipping             | Store at -20°C to -80°C for 12 months in lyophilized form. After reconstitution, if not intended for use within a month, aliquot and store at -80°C (Avoid repeated freezing and thawing). Lyophilized proteins are shipped at ambient temperature. |
| Background                   | Research grade biosimilar. Not for use in therapeutic or diagnostic procedures for humans or animals.   |
| Usage                        | Research use only   |



**Human CD27, hFc Tagged protein ELISA**

0.2 µg of CD27, hFc Tagged protein per well

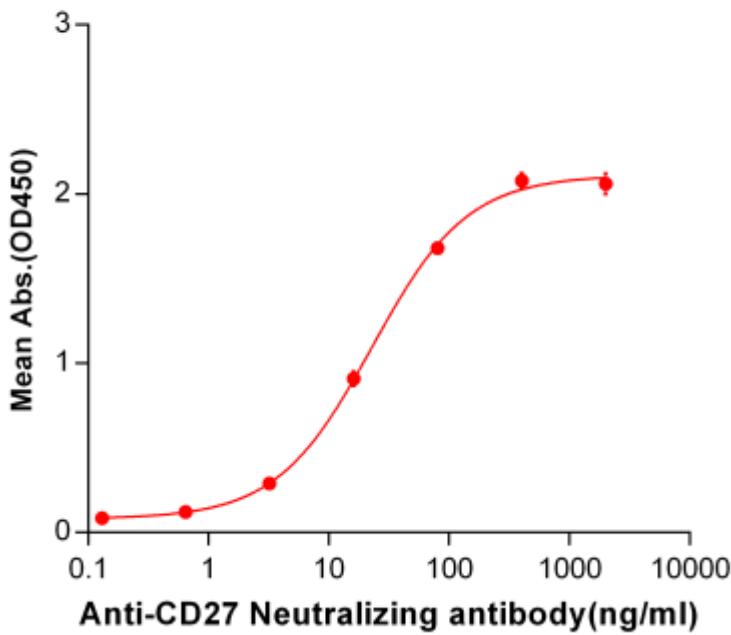


Figure 1. ELISA plate pre-coated by 2 µg/ml (100 µL/well) Human CD27, hFc tagged protein (PME100475) can bind Anti-CD27 Neutralizing antibody in a linear range of 3.2-80.0 ng/ml. In order to specifically detect BME100018, mouse anti-human Fab-specific antibody was used as detection antibody.

**Anti-CD27 (varlilumab biosimilar) mAb ELISA**

0.2 µg of CD27, mFc-His Tagged protein per well

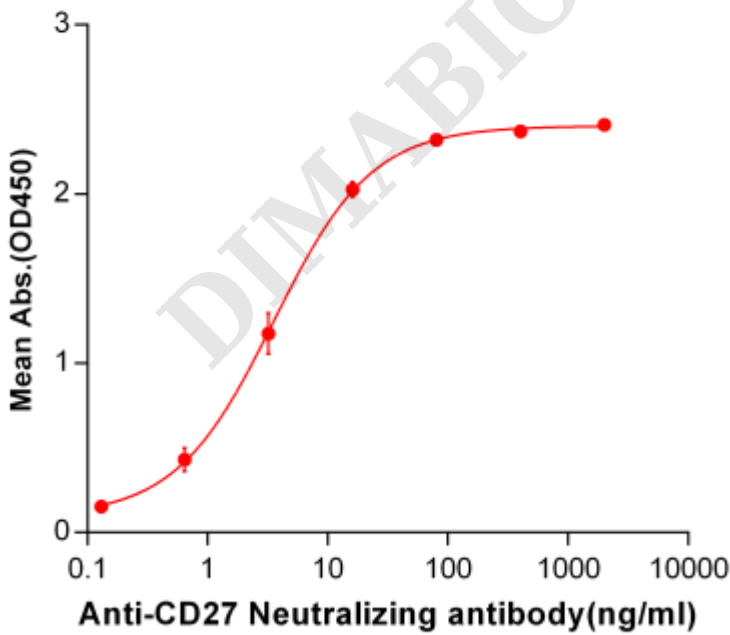
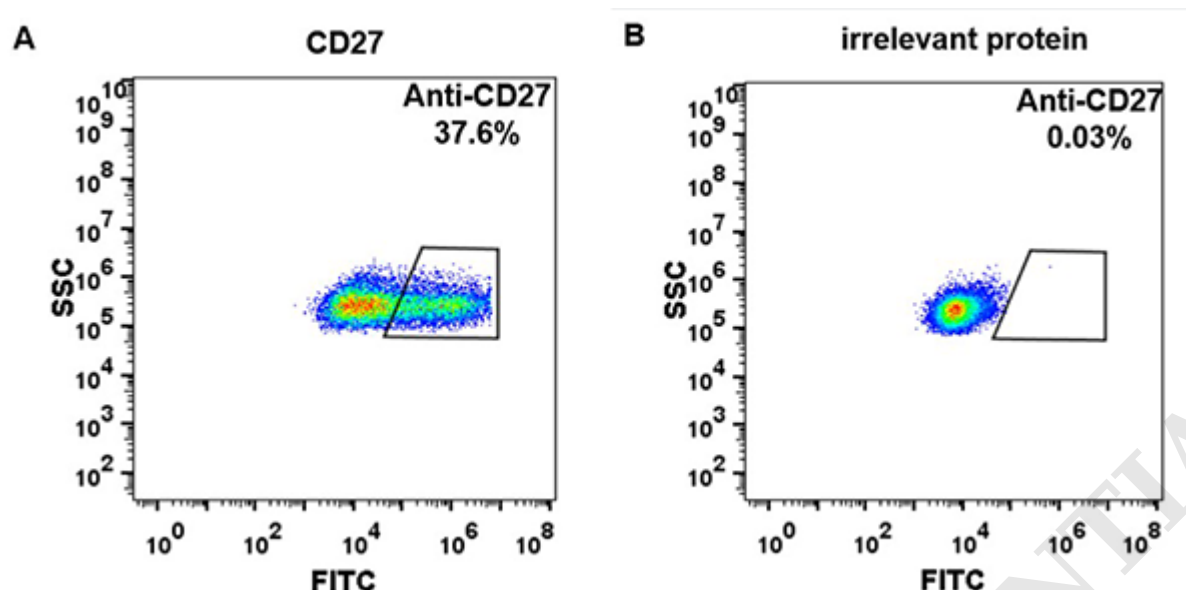


Figure 2. ELISA plate pre-coated by 2 µg/ml (100 µL/well) Human CD27, mFc-His tagged protein ([getskuurl sku="PME100013"]) can bind Anti-CD27 Neutralizing antibody in a linear range of 0.64-16.0 ng/ml.





**Figure 3.** HEK293 cell line transfected with irrelevant protein (**B**) and human CD27 protein (**A**) were surface stained with anti-CD27 neutralizing antibody  $1\mu\text{g/ml}$  (varlilumab) followed by Alexa 488-conjugated anti-human IgG secondary antibody.

