

PRODUCT INFORMATION

Common Name	IMGN-529, IMGN529, K7153A-SMCC-DM1
Conjugate	Unconjugated
Synonyms	CD37;TSPAN26;Tspan-26
Applications	Flow Cyt
Endotoxin	Less than 1.0 EU/ μ g by the LAL method. For <1 EU/mg requirements, please contact us for customization.
Recommended Dilutions	Flow Cyt 1:100
Formulation & Reconstitution	Lyophilized from sterile PBS, pH 7.4. Normally 5% - 8% trehalose is added as protectants before lyophilization. Please see Certificate of Analysis for specific instructions of reconstitution.
Host Species	Chimeric
IgG type	Human IgG1 - kappa
Reactivity	Human
Target	CD37
Uniprot ID	P11049
Description	Anti-CD37 (naratuximab biosimilar) mAb
Delivery	In Stock
Storage&Shipping	Store at -20°C to -80°C for 12 months in lyophilized form. After reconstitution, if not intended for use within a month, aliquot and store at -80°C (Avoid repeated freezing and thawing). Lyophilized proteins are shipped at ambient temperature.
Background	Research grade biosimilar. Not for use in therapeutic or diagnostic procedures for humans or animals.
Usage	Research use only



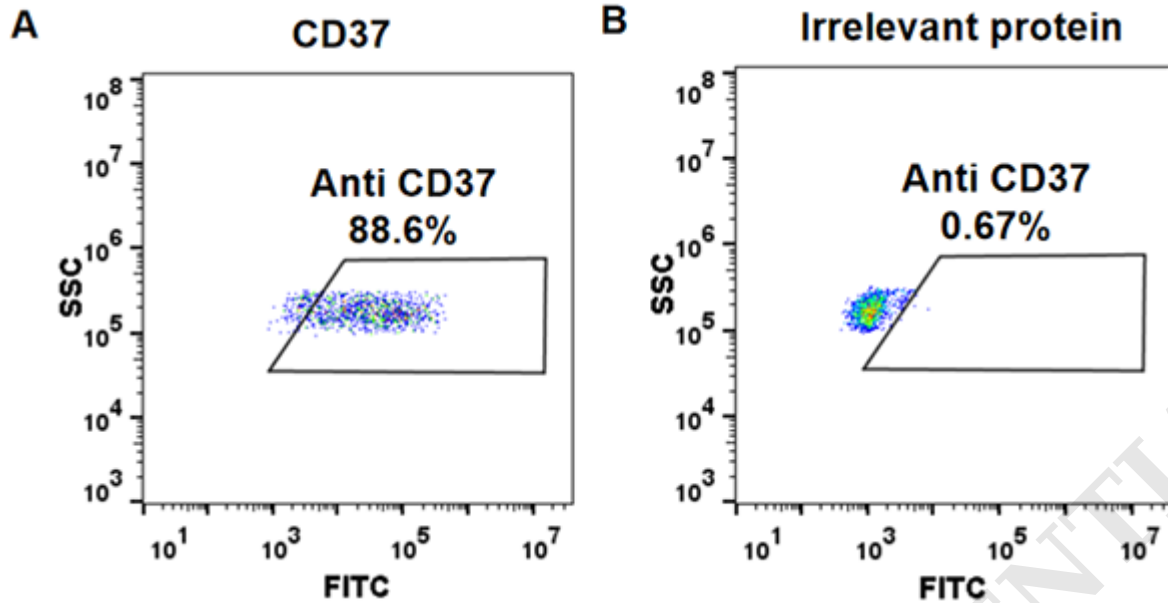


Figure 1. HEK293 cell line transfected with irrelevant protein (B) and human CD37 (A) were surface stained with Anti-CD37 mAb 1 $\mu\text{g}/\text{ml}$ (naratuximab) followed by Alexa 488-conjugated anti-human IgG secondary antibody.

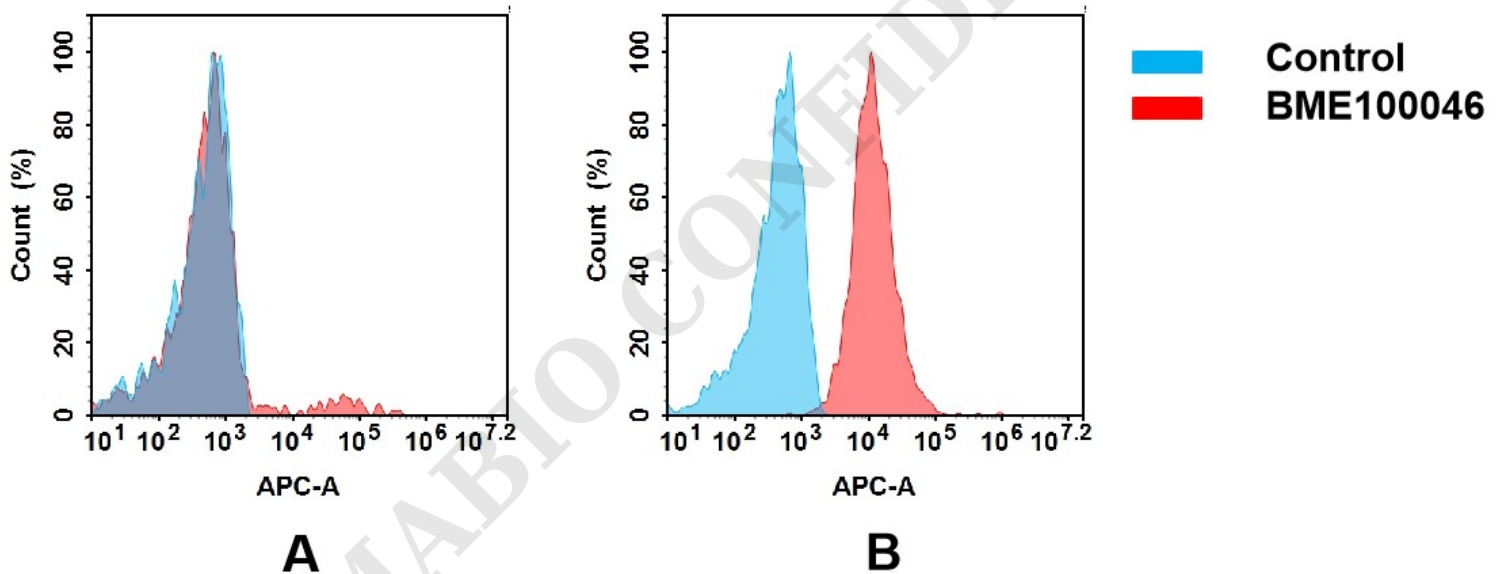


Figure 2. Flow cytometry analysis of antigen binding of anti-human CD37 mAb(BME100046).

(A) BME100046 does not bind to 293T cells that do not express CD37.

(B) A clear peak shift of BME100046 was seen compared to the control when incubated with CD37-expressing THP-1 cells, indicating strong binding of BME100046 to CD37. Antibodies were incubated at 5 $\mu\text{g}/\text{mL}$.

