

PRODUCT INFORMATION

Common Name	BM323
Synonyms	CD3e, T3E
Applications	Flow Cyt
Recommended Dilutions	Flow Cyt 1:100
Formulation & Reconstitution	Lyophilized from sterile PBS, pH 7.4. Normally 5 % - 8% trehalose is added as protectants before lyophilization. Please see Certificate of Analysis for specific instructions.
Host Species	Humanized
IgG type	IgG1
Reactivity	Human
Target	CD3E
Uniprot ID	P07766
Description	Anti-CD3E(DIMA BM323) mAb
Delivery	In Stock
Storage & Shipping	Store at -20°C to -80°C for 12 months in lyophilized form. After reconstitution, if not intended for use within a month, aliquot and store at -80°C (Avoid repeated freezing and thawing).Lyophilized antibodies are shipped at ambient temperature.
Background	Research grade biosimilar. Not for use in therapeutic or diagnostic procedures for humans or animals.
Usage	Research use only



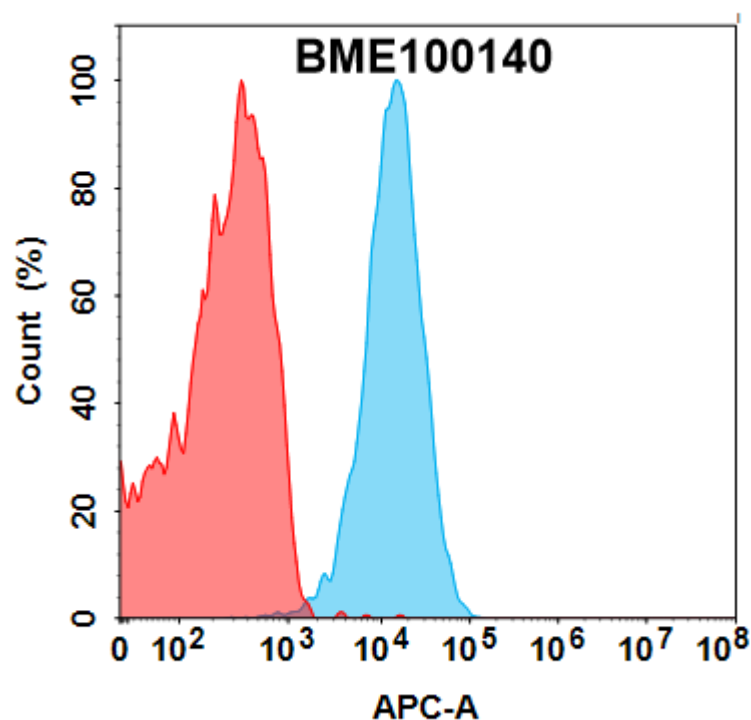


Figure 1. CD3E protein is highly expressed inside Jurkat cells. Flow cytometry analysis with 1 μ g/mL Anti-CD3E(DIMA BM323) mAb (BME100140) (Blue histogram) or isotype control mAb (Red histogram) on Jurkat cells.

