

PRODUCT INFORMATION

Clone ID	DM44
Target	CD48
Synonyms	CD48; BCM1; SLAMF2; BLAST; BLAST1; MEM-102; TCT.1; BCM-1; SLAMF-2; BLAST-1
Host Species	Rabbit
Description	Anti-CD48 antibody(DM44); Rabbit mAb
Delivery	In Stock
Uniprot ID	P09326
IgG type	Rabbit IgG
Clonality	Monoclonal
Reactivity	Human
Applications	ELISA; Flow Cyt; WB
Recommended Dilutions	ELISA 1:5000-10000; Flow Cyt 1:100; WB 1:1000
Purification	Purified from cell culture supernatant by affinity chromatography
Formulation & Reconstitution	Lyophilized from sterile PBS, pH 7.4. Normally 5 % - 8% trehalose is added as protectants before lyophilization. Please see Certificate of Analysis for specific instructions of reconstitution.
Storage & Shipping	Store at -20°C to -80°C for 12 months in lyophilized form. After reconstitution, if not intended for use within a month, aliquot and store at -80°C (Avoid repeated freezing and thawing). Lyophilized proteins are shipped at ambient temperature.
Background	This gene encodes a member of the CD2 subfamily of immunoglobulin-like receptors which includes SLAM (signaling lymphocyte activation molecules) proteins. The encoded protein is found on the surface of lymphocytes and other immune cells; dendritic cells and endothelial cells; and participates in activation and differentiation pathways in these cells. The encoded protein does not have a transmembrane domain; however; but is held at the cell surface by a GPI anchor via a C-terminal domain which maybe cleaved to yield a soluble form of the receptor. Multiple transcript variants encoding different isoforms have been found for this gene.
Usage	Research use only
Conjugate	Unconjugated
DIMA Disclaimer	All DIMA recombinant antibodies are genuinely generated by DIMA Biotech. They are all under patent application. Any protein sequencing or reverse engineering attempt is prohibited. We are actively scrutinizing all patent application to ensure no IP infringement.



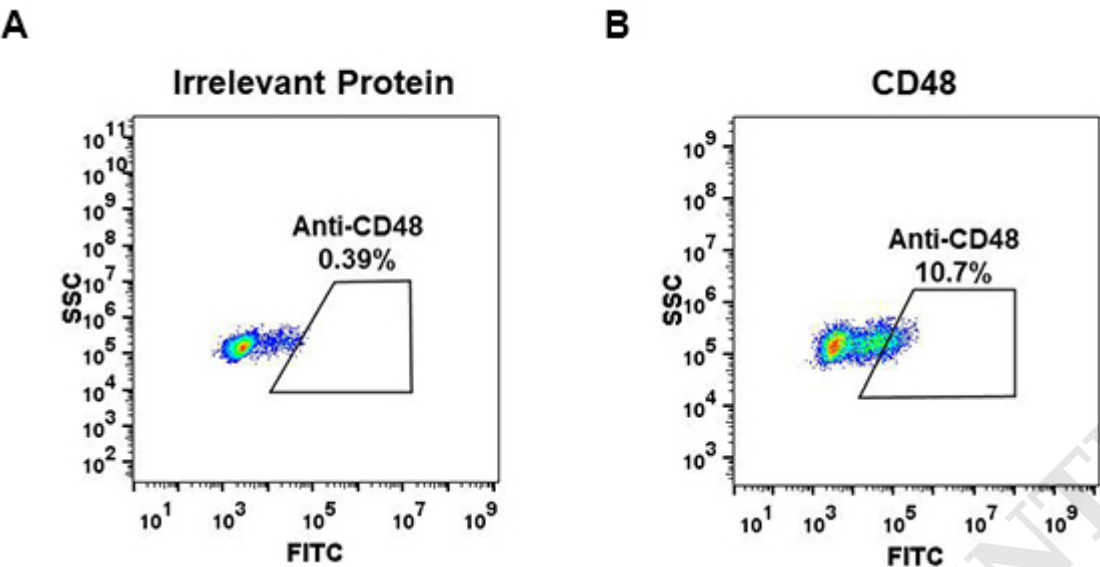


Figure 1. HEK293 cell line transfected with irrelevant protein (left) and human CD48 (right) were surface stained with Rabbit anti-CD48 monoclonal antibody 1 μ g/ml (clone: DM44) followed by Alexa 488-conjugated anti-rabbit IgG secondary antibody.

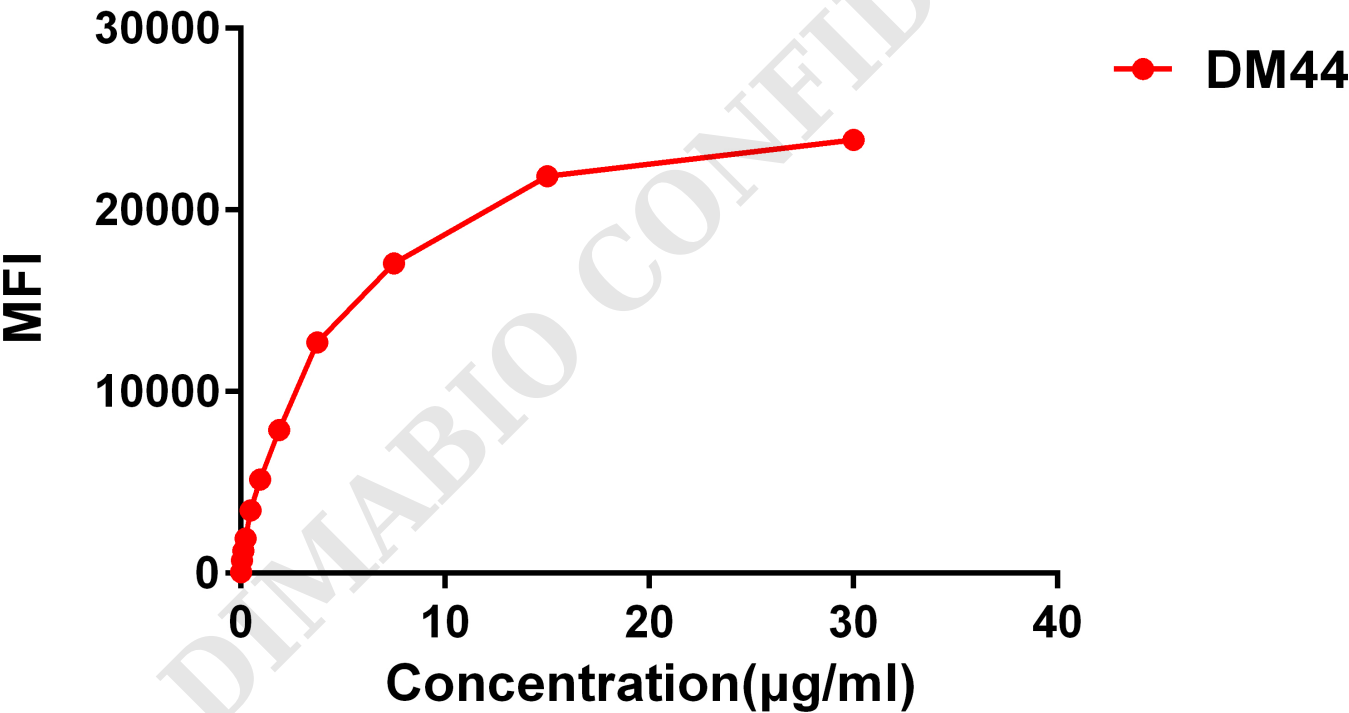
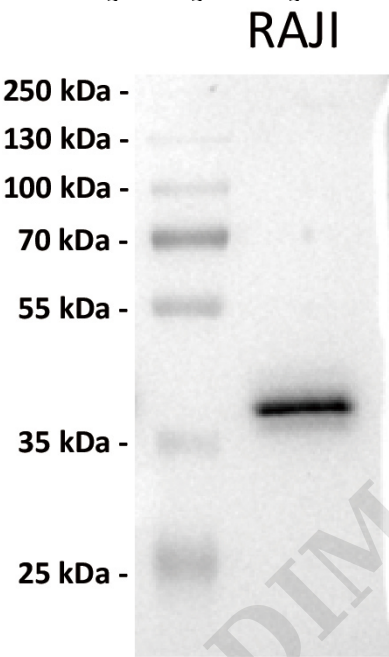
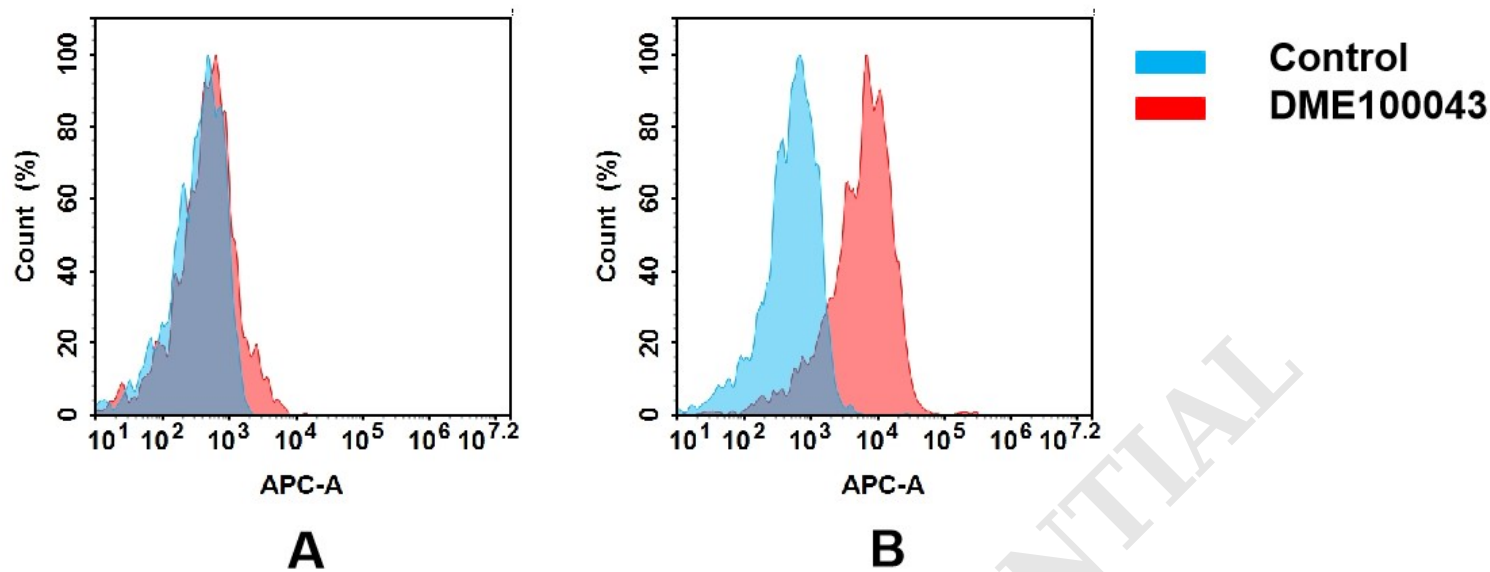


Figure 2. Flow cytometry data of serially titrated Rabbit anti-CD48 monoclonal antibody (clone: DM44) on H929 cells. The Y-axis represents the mean fluorescence intensity (MFI) while the X-axis represents the concentration of IgG used.





CD48-DM44

Figure 5. Anti-CD48 antibody (SKU# DME100043) at 1/1000 dilution

Lane : Raji (human Burkitt's lymphoma B lymphocyte), whole cell lysate

Secondary : Goat Anti-Rabbit IgG H&L (HRP) at 1/5000 dilution

Predicted band size: 28 kDa
Observed band size: 40 kDa

