

PRODUCT INFORMATION

Common Name	UB-421, UB421, UB 421
Conjugate	Unconjugated
Synonyms	CD4
Applications	ELISA □ Flow Cyt
Endotoxin	Less than 1.0 EU/μg by the LAL method. For <1 EU/mg requirements, please contact us for customization.
Recommended Dilutions	ELISA 1:5000-10000 □ Flow Cyt 1:100
Formulation & Reconstitution	Lyophilized from sterile PBS, pH 7.4. Normally 5% - 8% trehalose is added as protectants before lyophilization. Please see Certificate of Analysis for specific instructions of reconstitution.
Host Species	Chimeric
IgG type	Human IgG1(N297H,E356D,M358L) - Kappa
Reactivity	Human
Target	CD4
Uniprot ID	P01730
Description	Anti-CD4(semzuvolimab biosimilar) mAb
Delivery	In Stock
Storage&Shipping	Store at -20°C to -80°C for 12 months in lyophilized form. After reconstitution, if not intended for use within a month, aliquot and store at -80°C (Avoid repeated freezing and thawing). Lyophilized antibodies are shipped at ambient temperature.
Sterility	Products are supplied non-sterile. For cell culture applications, dilute in appropriate medium and sterile-filter (0.22 μm) prior to use.
Background	Research grade biosimilar. Not for use in therapeutic or diagnostic procedures for humans or animals.
Usage	Research use only



Anti-CD4(semzuvolimab biosimilar) mAb ELISA

0.2 μ g of Human CD4, His tagged protein per well

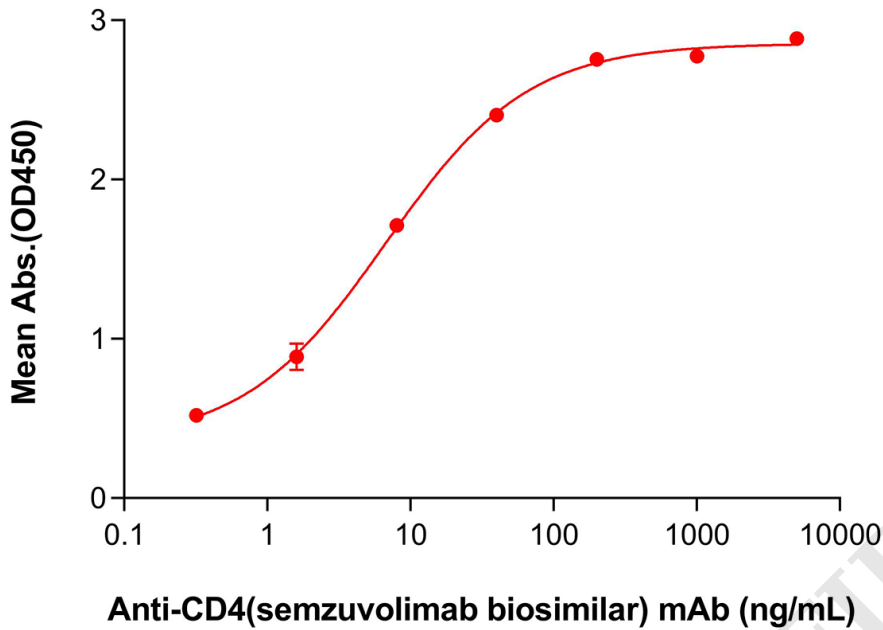


Figure 1. ELISA plate pre-coated by 2 μ g/mL (100 μ L/well) Human CD4 Protein, His Tag (PME101666) can bind Anti-CD4(semzuvolimab biosimilar) mAb (BME100664) in a linear range of 1.6-8.0 ng/mL .

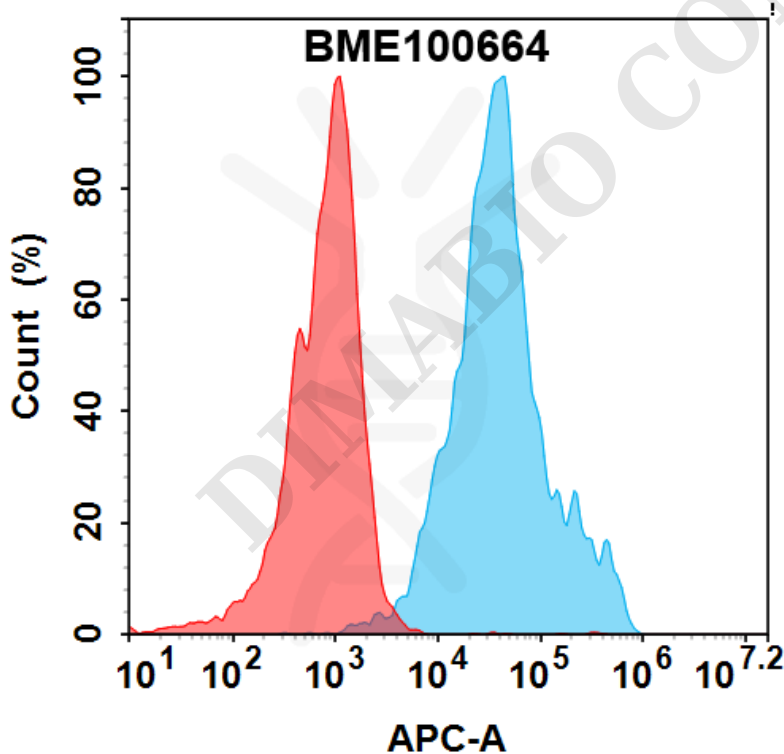


Figure 2. Flow cytometry analysis with 0.5 μ g/ml Anti-CD4(semzuvolimab biosimilar) mAb (BME100664) on HEK293 cells transfected with Human CD4 protein (Blue histogram) and HEK293 transfected with irrelevant protein (Red histogram) .

