

PRODUCT INFORMATION

Clone ID	1G6
Target	CD6
Synonyms	TP120
Host Species	Rabbit
Description	Anti-CD6 antibody(1G6); IgG1 Chimeric mAb
Delivery	In Stock
Uniprot ID	P30203
IgG type	Rabbit/Human Fc chimeric IgG1
Clonality	Monoclonal
Reactivity	Human
Applications	Flow Cyt
Recommended Dilutions	Flow Cyt 1/100
Purification	Purified from cell culture supernatant by affinity chromatography
Formulation & Reconstitution	Lyophilized from sterile PBS, pH 7.4. Normally 5 % - 8% trehalose is added as protectants before lyophilization. Please see Certificate of Analysis for specific instructions of reconstitution.
Storage & Shipping	Store at -20°C to -80°C for 12 months in lyophilized form. After reconstitution, if not intended for use within a month, aliquot and store at -80°C (Avoid repeated freezing and thawing). Lyophilized proteins are shipped at ambient temperature.
Background	This gene encodes a protein found on the outer membrane of T-lymphocytes as well as some other immune cells. The encoded protein contains three scavenger receptor cysteine-rich (SRCR) domains and a binding site for an activated leukocyte cell adhesion molecule. The gene product is important for continuation of T cell activation. This gene may be associated with susceptibility to multiple sclerosis (PMID: 19525953, 21849685). Multiple transcript variants encoding different isoforms have been found for this gene. [provided by RefSeq, Dec 2011]
Usage	Research use only
Conjugate	Unconjugated
DIMA Disclaimer	All DIMA recombinant antibodies are genuinely generated by DIMA Biotech. They are all under patent application. Any protein sequencing or reverse engineering attempt is prohibited. We are actively scrutinizing all patent application to ensure no IP infringement.



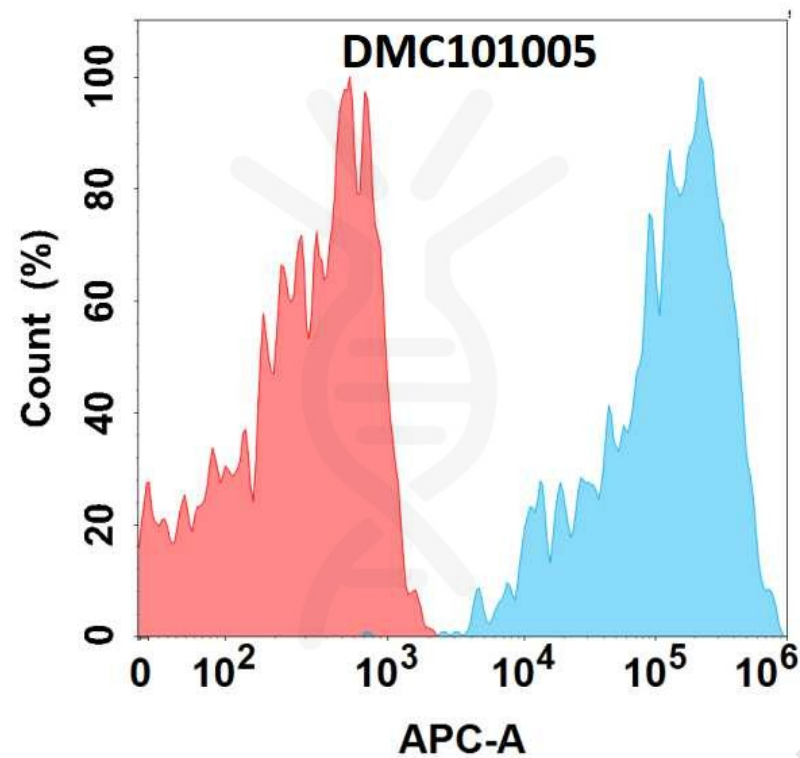


Figure 1. Flow cytometry analysis with Anti-CD6 (1G6) mAb on HEK293 cells transfected with human CD6 (Blue histogram) or HEK293 transfected with irrelevant protein (Red histogram).

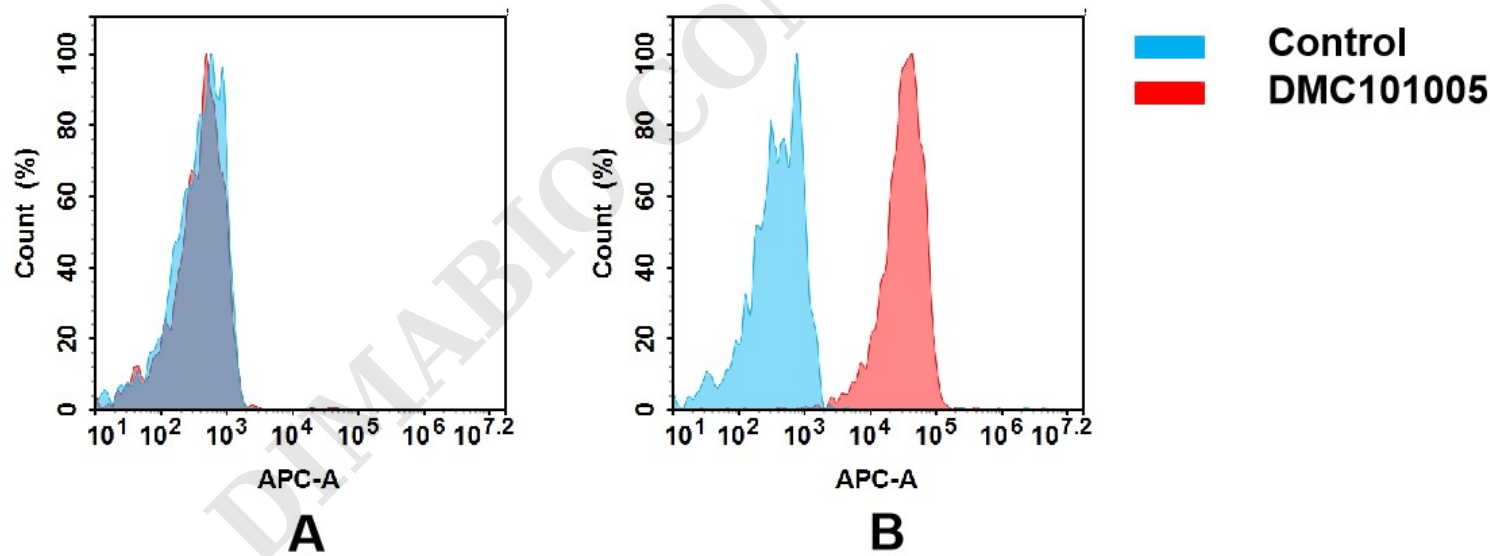


Figure 2. Flow cytometry analysis of antigen binding of anti-human CD6 mAb(DMC101005).
(A) DMC101005 does not bind to CHO-S cells that do not express CD6.
(B) A clear peak shift of DMC101005 was seen compared to the control when incubated with CD6-expressing HUT78 cells, indicating strong binding of DMC101005 to CD6. Antibodies were incubated at 5 µg/mL.

