

PRODUCT INFORMATION

Common Name	IMMU-130, hMN-14-SN-38, hMN-14-SN-38 ADC, hMN14-CL-SN-38, hMN14-SN-38, Unconjugated mAb
Conjugate	Unconjugated
Synonyms	CEACAM-5;CD66e;CEA;Meconium antigen 100
Applications	ELISA; Flow Cyt
Recommended Dilutions	ELISA 1:5000-10000
Formulation & Reconstitution	Lyophilized from sterile PBS, pH 7.4. Normally 5 % - 8% trehalose is added as protectants before lyophilization. Please see Certificate of Analysis for specific instructions of reconstitution.
Host Species	Humanized
IgG type	Human IgG1 - kappa
Reactivity	Human
Target	CEACAM5
Uniprot ID	P06731
Description	Anti-CEACAM5 (labetuzumab biosimilar) mAb
Delivery	In Stock
Storage & Shipping	Store at -20°C to -80°C for 12 months in lyophilized form. After reconstitution, if not intended for use within a month, aliquot and store at -80°C (Avoid repeated freezing and thawing). Lyophilized proteins are shipped at ambient temperature.
Background	Research grade biosimilar. Not for use in therapeutic or diagnostic procedures for humans or animals. Our unconjugated biosimilar monoclonal antibodies (mAbs) are based on the sequences outlined in relevant patents or scientific publications. These antibodies are in their native, unconjugated form, meaning they do not contain any payload or therapeutic agent attached. They are designed for use in research and development, and their performance has been tested as standalone molecules through comprehensive QC tests.
Usage	Research use only
DIMA Disclaimer	All DIMA recombinant antibodies are genuinely generated by DIMA Biotech. They are all under patent application. Any protein sequencing or reverse engineering attempt is prohibited. We are actively scrutinizing all patent application to ensure no IP infringement.



Anti-CEACAM5 (labetuzumab biosimilar) mAb ELISA
0.2 µg of CEACAM5, His Tagged protein per well

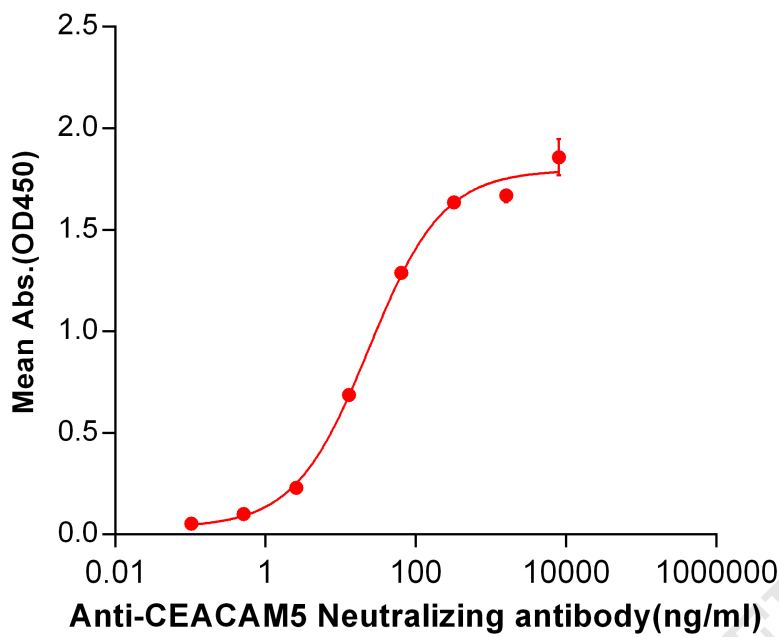


Figure 1. ELISA plate pre-coated by 2 µg/ml (100 µl/well) Human CEACAM5, His tagged protein PME100071 can bind Anti-CEACAM5 Neutralizing antibody(BME100035) in a linear range of 2.56-320 ng/ml.

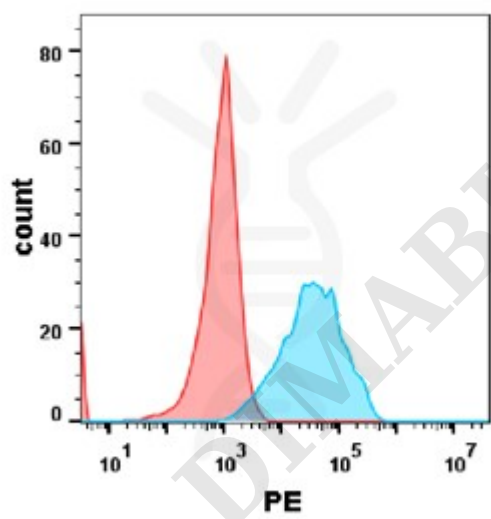


Figure 2. Flow cytometry analysis with Anti-CEACAM5 (labetuzumab) on Expi293 cells transfected with human CEACAM5 (Blue histogram) or Expi293 transfected with irrelevant protein(Red histogram).



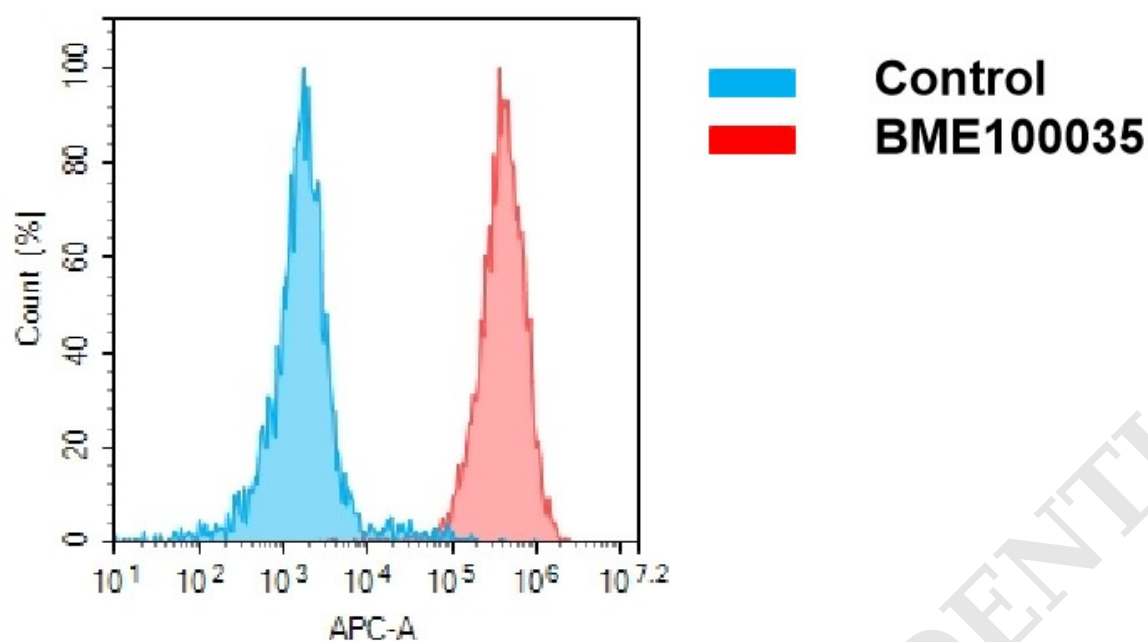
**A**

Figure 3. Flow cytometry analysis of antigen binding of anti-human CEACAM5 mAb(BME100035). (A) A clear peak shift of BME100035 was seen compared to the control when incubated with CEACAM5-expressing MKN45 cells, indicating strong binding of BME100035 to CEACAM5. Antibodies were incubated at 2 μ g/mL.

