

PRODUCT INFORMATION

Clone ID	DMC483
Target	CHI3L1
Synonyms	ASRT7; CGP-39; GP-39; GP39; HC-gp39; HCGP-3P; hCGP-39; YK-40; YKL-40; YKL40; YYL-40
Host Species	Rabbit
Description	Anti-CHI3L1 antibody(DMC483); IgG1 Chimeric mAb
Delivery	In Stock
Uniprot ID	P36222
IgG type	Rabbit/Human Fc chimeric IgG1
Clonality	Monoclonal
Reactivity	Human
Applications	Flow Cyt
Recommended Dilutions	Flow Cyt 1:100
Purification	Purified from cell culture supernatant by affinity chromatography
Formulation & Reconstitution	Lyophilized from sterile PBS, pH 7.4. Normally 5 % - 8% trehalose is added as protectants before lyophilization. Please see Certificate of Analysis for specific instructions of reconstitution.
Storage & Shipping	Store at -20°C to -80°C for 12 months in lyophilized form. After reconstitution, if not intended for use within a month, aliquot and store at -80°C (Avoid repeated freezing and thawing). Lyophilized proteins are shipped at ambient temperature.
Background	Chitinases catalyze the hydrolysis of chitin; which is an abundant glycopolymer found in insect exoskeletons and fungal cell walls. The glycoside hydrolase 18 family of chitinases includes eight human family members. This gene encodes a glycoprotein member of the glycosyl hydrolase 18 family. The protein lacks chitinase activity and is secreted by activated macrophages; chondrocytes; neutrophils and synovial cells. The protein is thought to play a role in the process of inflammation and tissue remodeling. [provided by RefSeq; Sep 2009]
Usage	Research use only



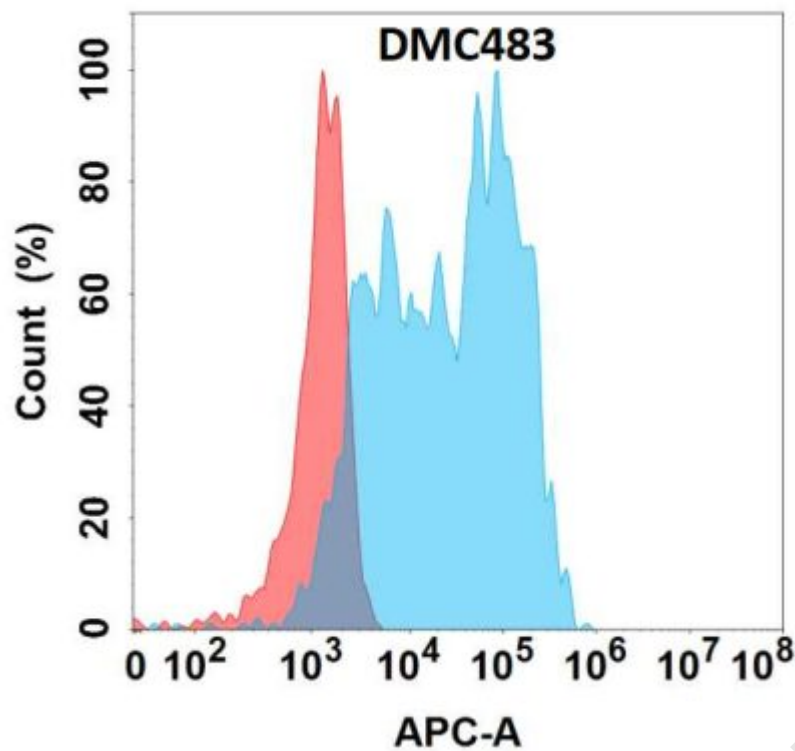


Figure 1. Flow cytometry analysis with Anti-CHI3L1 (DMC483) on Expi293 cells transfected with human CHI3L1 (Blue histogram) or Expi293 transfected with irrelevant protein (Red histogram).

