

PRODUCT INFORMATION

Clone ID	355F5
Target	CLDN18.2,CLDN18.1
Synonyms	Claudin 18
Host Species	Rabbit
Description	Anti-CLDN18 antibody(355F5), IgG1 Chimeric mAb
Delivery	In Stock
Uniprot ID	P56856
IgG type	Rabbit/Human Fc chimeric IgG1
Clonality	Monoclonal
Reactivity	Human
Applications	Flow Cyt
Recommended Dilutions	Flow Cyt 1/100
Purification	Purified from cell culture supernatant by affinity chromatography
Endotoxin	Less than 1.0 EU/ μ g by the LAL method. For <1 EU/mg requirements, please contact us for customization.
Formulation & Reconstitution	Powder
Storage&Shipping	Store at -20°C to -80°C for 12 months in lyophilized form. After reconstitution, if not intended for use within a month, aliquot and store at -80°C (Avoid repeated freezing and thawing).
Sterility	Products are supplied non-sterile. For cell culture applications, dilute in appropriate medium and sterile-filter (0.22 μ m) prior to use.
Background	CLDN18 belongs to the large claudin family of proteins; which form tight junction strands in epithelial cells.
Usage	Research use only
Conjugate	Unconjugated



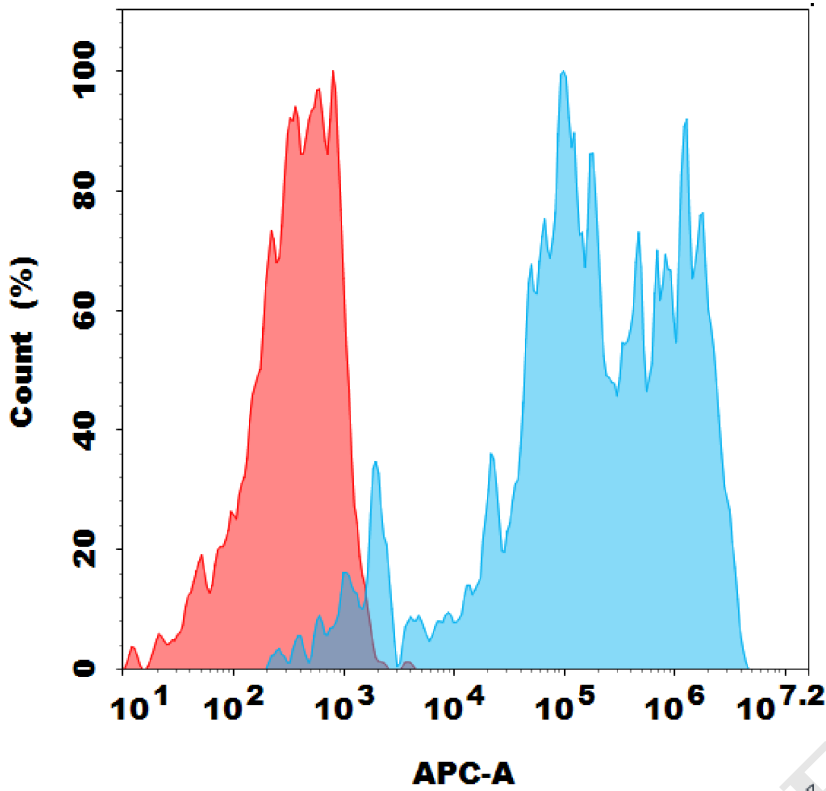


Figure 1. Flow cytometry analysis with $1\mu\text{g}/\text{mL}$ Anti-CLDN18 antibody(355F5) mAb on HEK293 cells transfected with human CLDN18.2 (Blue histogram) or HEK293 transfected with irrelevant protein (Red histogram).

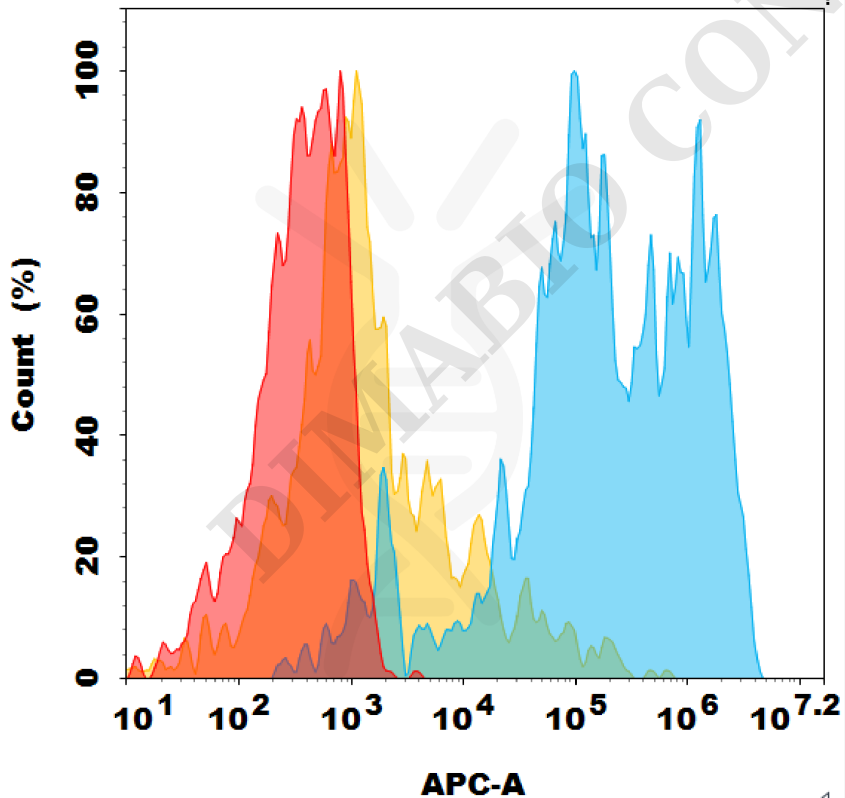


Figure 2. Flow cytometry analysis with $1\mu\text{g}/\text{mL}$ Anti-CLDN18 antibody(355F5) mAb on HEK293 cells transfected with human CLDN18.2 (Blue histogram) or HEK293 transfected with human CLDN18.1(Yellow histogram) or HEK293 transfected with irrelevant protein (Red histogram).

