

PRODUCT INFORMATION

Common Name	LM 102,LM-102,LM102
Conjugate	Unconjugated
Synonyms	CLDN18.2
Applications	ELISA□Flow Cyt
Endotoxin	Less than 1.0 EU/μg by the LAL method. For <1 EU/mg requirements, please contact us for customization.
Recommended Dilutions	ELISA 1:5000-10000□Flow Cyt 1:100
Formulation & Reconstitution	Lyophilized from sterile PBS, pH 7.4. Normally 5% - 8% trehalose is added as protectants before lyophilization. Please see Certificate of Analysis for specific instructions of reconstitution.
Host Species	Humanized
IgG type	Human IgG1(S239D,I332E,E356D,M358L) - kappa
Reactivity	Human
Target	CLDN18.2
Uniprot ID	P56856
Description	Anti-CLDN18.2(tecotabart biosimilar) mAb
Delivery	In Stock
Storage&Shipping	Store at -20°C to -80°C for 12 months in lyophilized form. After reconstitution, if not intended for use within a month, aliquot and store at -80°C (Avoid repeated freezing and thawing). Lyophilized antibodies are shipped at ambient temperature.
Sterility	Products are supplied non-sterile. For cell culture applications, dilute in appropriate medium and sterile-filter (0.22 μm) prior to use.
Background	Research grade biosimilar. Not for use in therapeutic or diagnostic procedures for humans or animals.
Usage	Research use only



Anti-CLDN18.2(tecotabart biosimilar) mAb ELISA

0.2 μ g of Human CLDN18.2 full length protein per well

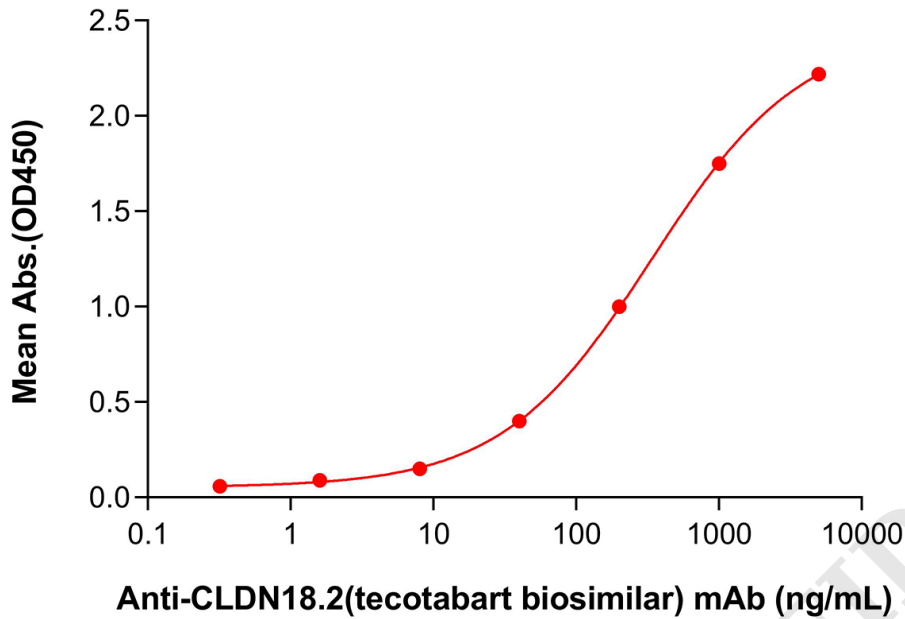


Figure 1. ELISA plate pre-coated by 2 μ g/mL (100 μ L/well) Human CLDN18.2 full length protein-synthetic nanodisc (FLP100014) can bind Anti-CLDN18.2(tecotabart biosimilar) mAb (BME100690) in a linear range of 0.2-1 μ g/mL .

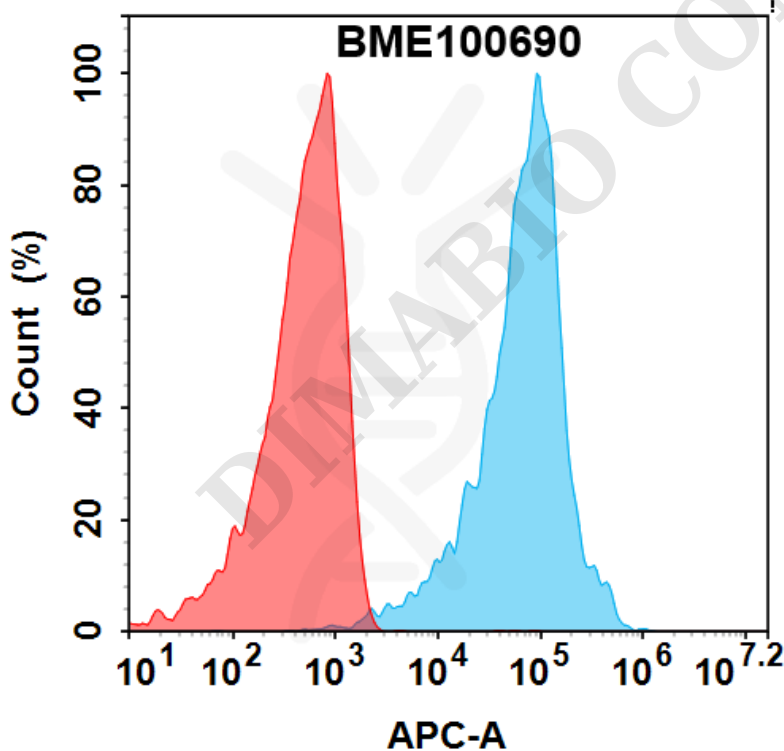


Figure 2. Flow cytometry analysis with 0.5 μ g/ml Anti-CLDN18.2(tecotabart biosimilar) mAb (BME100690) on HEK293 cells transfected with Human CLDN18.2 protein (Blue histogram) and HEK293 transfected with irrelevant protein (Red histogram)

