

PRODUCT INFORMATION

Common Name	16B5, AB-16B5
Synonyms	AAG4, APOJ, CLI, KUB1
Conjugate	Unconjugated
Applications	N/A
Recommended Dilutions	N/A
Endotoxin	Less than 1.0 EU/ μ g by the LAL method. For <1 EU/mg requirements, please contact us for customization.
Formulation & Reconstitution	Lyophilized from sterile PBS, pH 7.4. Normally 5% - 8% trehalose is added as protectants before lyophilization. Please see Certificate of Analysis for specific instructions of reconstitution.
Host Species	Humanized
IgG type	Human IgG2 - Kappa
Reactivity	Human
Target	CLU
Uniprot ID	P10909
Description	Anti-CLU(sotevtamab biosimilar) mAb
Delivery	In Stock
Storage&Shipping	Store at -20°C to -80°C for 12 months in lyophilized form. After reconstitution, if not intended for use within a month, aliquot and store at -80°C (Avoid repeated freezing and thawing). Lyophilized antibodies are shipped at ambient temperature.
Sterility	Products are supplied non-sterile. For cell culture applications, dilute in appropriate medium and sterile-filter (0.22 μ m) prior to use.
Background	Research grade biosimilar. Not for use in therapeutic or diagnostic procedures for humans or animals.
Usage	Research use only



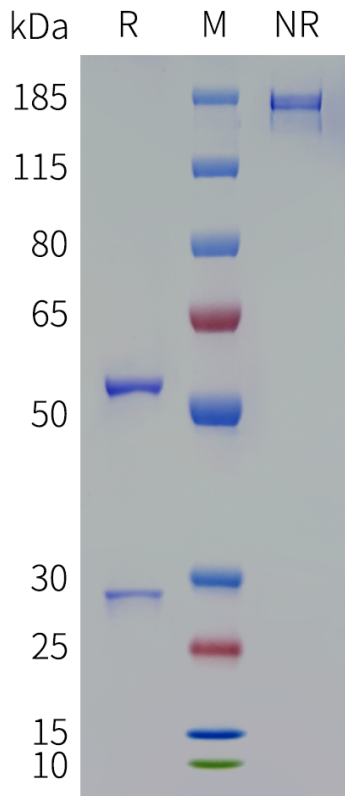


Figure 1. Anti-CLU(sotevtamab biosimilar) mAb on SDS-PAGE under reducing (R) and non-reducing (NR) conditions.

DIMABIO CONFIDENTIAL

