

PRODUCT INFORMATION

Common Name	HuC110-34
Conjugate	Unconjugated
Synonyms	CD355
Applications	ELISA, Flow Cyt
Endotoxin	Less than 1.0 EU/ μ g by the LAL method. For <1 EU/mg requirements, please contact us for customization.
Recommended Dilutions	ELISA 1:5000-10000, Flow Cyt 1:100
Formulation & Reconstitution	Lyophilized from sterile PBS, pH 7.4. Normally 5% - 8% trehalose is added as protectants before lyophilization. Please see Certificate of Analysis for specific instructions of reconstitution.
Host Species	Humanized
IgG type	Human IgG4(L235E) - kappa
Reactivity	Human
Target	CRTAM
Uniprot ID	O95727
Description	Anti-CRTAM(HuC110-34 biosimilar) mAb
Delivery	In Stock
Storage&Shipping	Store at -20°C to -80°C for 12 months in lyophilized form. After reconstitution, if not intended for use within a month, aliquot and store at -80°C (Avoid repeated freezing and thawing). Lyophilized antibodies are shipped at ambient temperature.
Background	Research grade biosimilar. Not for use in therapeutic or diagnostic procedures for humans or animals.
Usage	Research use only



Anti-CRTAM(HuC110-34 biosimilar) mAb ELISA

0.2 μ g of Human CRTAM, mFc tagged protein per well

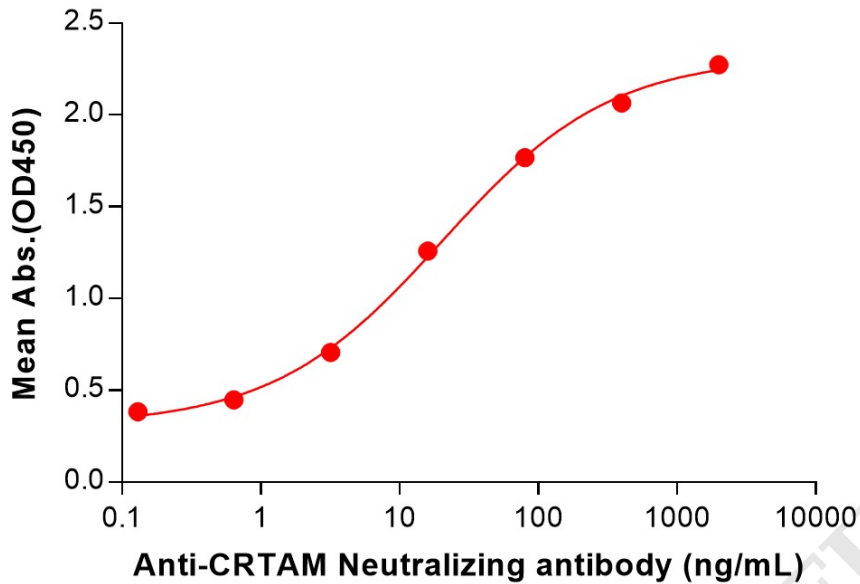


Figure 1. ELISA plate pre-coated by 2 μ g/mL (100 μ L/well) Human CRTAM Protein, mFc Tag (PME101547) can bind Anti-CRTAM(HuC110-34 biosimilar) mAb (BME100227) in a linear range of 3.20-400 ng/mL.

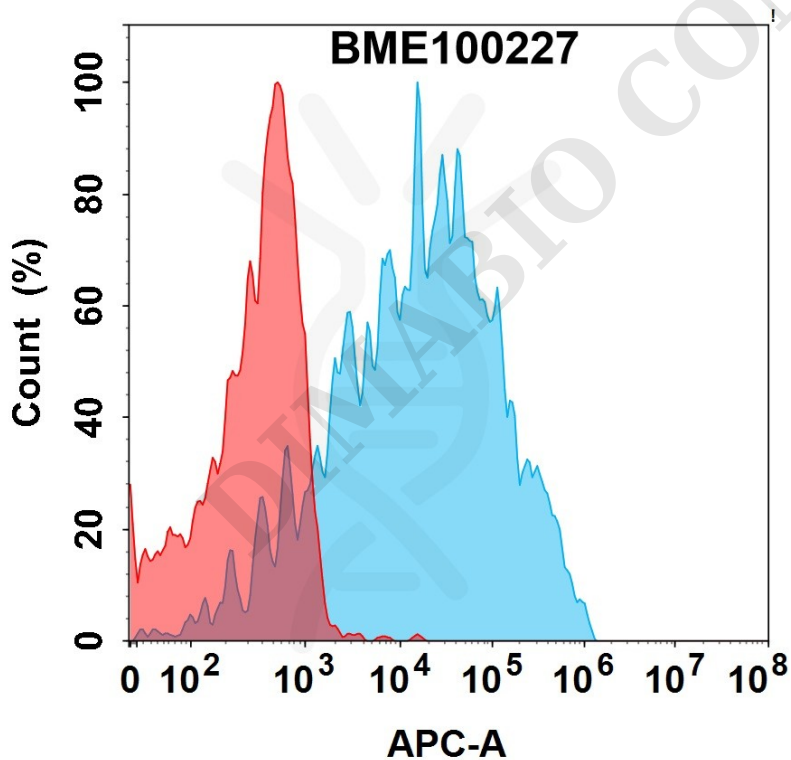


Figure 2. Flow cytometry analysis with 15 μ g/mL Anti-CRTAM(HuC110-34 biosimilar) mAb (BME100227) on HEK293 cells transfected with Human CRTAM protein (Blue histogram) or HEK293 transfected with irrelevant protein (Red histogram).

