

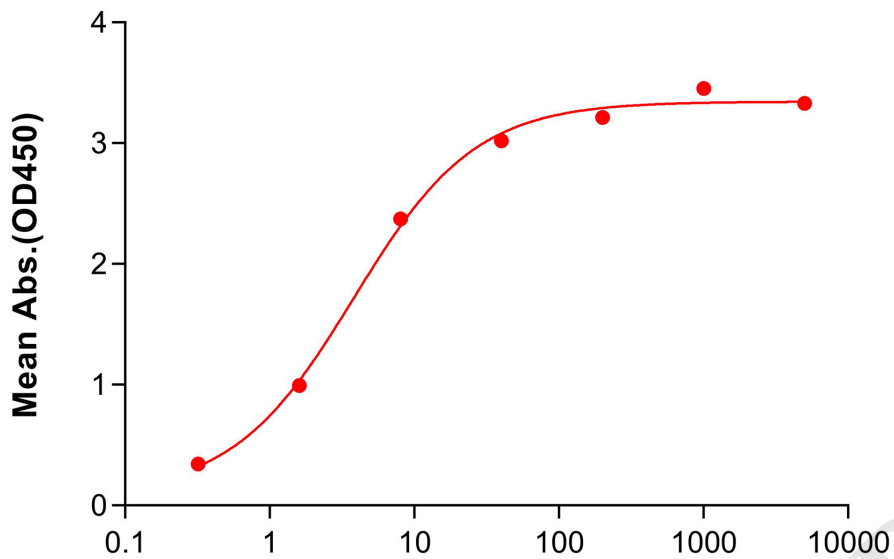
PRODUCT INFORMATION

Common Name	AGEN-1181
Conjugate	Unconjugated
Synonyms	CTLA4, CD152
Applications	ELISA, Flow Cyt
Endotoxin	Less than 1.0 EU/ μ g by the LAL method. For <1 EU/mg requirements, please contact us for customization.
Recommended Dilutions	ELISA 1:5000-10000, Flow Cyt 1:100
Formulation & Reconstitution	Lyophilized from sterile PBS, pH 7.4. Normally 5% - 8% trehalose is added as protectants before lyophilization. Please see Certificate of Analysis for specific instructions of reconstitution.
Host Species	Homo sapiens
IgG type	Human IgG1(K214R,S239D,A330L,I332E) - kappa
Reactivity	Human
Target	CTLA-4
Uniprot ID	P16410
Description	Anti-CTLA-4(botensilimab biosimilar) mAb
Delivery	In Stock
Storage&Shipping	Store at -20°C to -80°C for 12 months in lyophilized form. After reconstitution, if not intended for use within a month, aliquot and store at -80°C (Avoid repeated freezing and thawing). Lyophilized antibodies are shipped at ambient temperature.
Sterility	Products are supplied non-sterile. For cell culture applications, dilute in appropriate medium and sterile-filter (0.22 μ m) prior to use.
Background	Research grade biosimilar. Not for use in therapeutic or diagnostic procedures for humans or animals.
Usage	Research use only



Anti-CTLA-4(botensilimab biosimilar) mAb ELISA

0.2 μg of Human CTLA-4, mFc-His tagged protein per well



Anti-CTLA-4(botensilimab biosimilar) mAb (ng/mL)

Figure 1. ELISA plate pre-coated by 2 $\mu\text{g}/\text{mL}$ (100 $\mu\text{L}/\text{well}$) Human CTLA-4 Protein, mFc-His Tag(PME100017) can bind Anti-CTLA-4(botensilimab biosimilar) mAb (BME100440) in a linear range of 1.6-8.0 ng/mL.

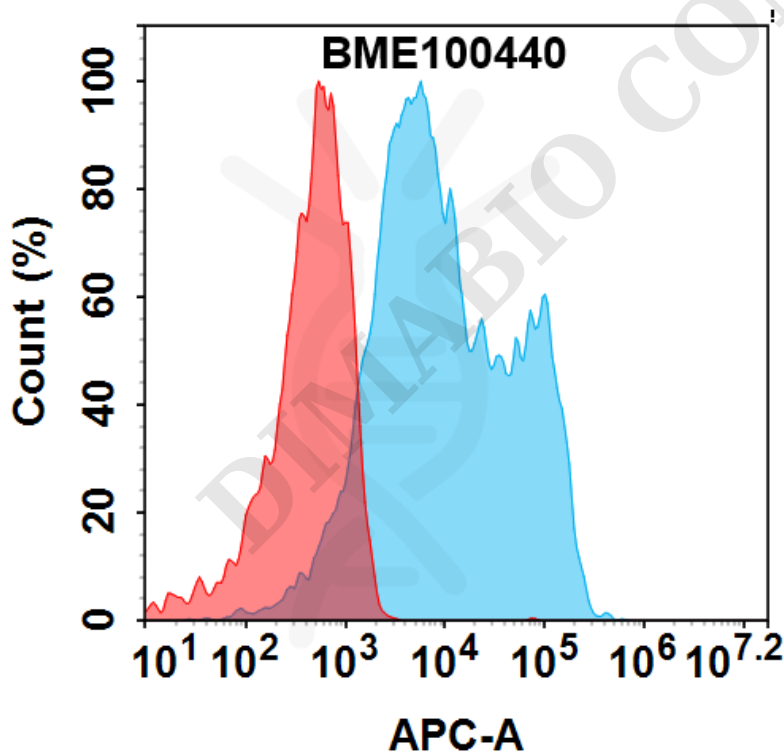


Figure 2. Flow cytometry analysis with 0.5 $\mu\text{g}/\text{mL}$ Anti-CTLA-4(botensilimab biosimilar) mAb (BME100440) on HEK293 cells transfected with human CTLA-4 (Blue histogram) or HEK293 transfected with irrelevant protein (Red histogram).

