

**PRODUCT INFORMATION**

<b>Common Name</b>	E-6011
<b>Conjugate</b>	Unconjugated
<b>Synonyms</b>	FKN, NTT, SCYD1, A-152E5.2
<b>Applications</b>	ELISA, Flow Cyt
<b>Endotoxin</b>	Less than 1.0 EU/μg by the LAL method. For <1 EU/mg requirements, please contact us for customization.
<b>Recommended Dilutions</b>	ELISA 1:5000-10000, Flow Cyt 1:100
<b>Formulation &amp; Reconstitution</b>	Lyophilized from sterile PBS, pH 7.4. Normally 5% - 8% trehalose is added as protectants before lyophilization. Please see Certificate of Analysis for specific instructions of reconstitution.
<b>Host Species</b>	Chimeric Humanized
<b>IgG type</b>	Human IgG2(V235A,G237A,S378A) - Kappa
<b>Reactivity</b>	Human
<b>Target</b>	CX3CL1
<b>Uniprot ID</b>	P78423
<b>Description</b>	Anti-CX3CL1(quetmolimab biosimilar) mAb
<b>Delivery</b>	In Stock
<b>Storage&amp;Shipping</b>	Store at -20°C to -80°C for 12 months in lyophilized form. After reconstitution, if not intended for use within a month, aliquot and store at -80°C (Avoid repeated freezing and thawing). Lyophilized antibodies are shipped at ambient temperature.
<b>Sterility</b>	Products are supplied non-sterile. For cell culture applications, dilute in appropriate medium and sterile-filter (0.22 μm) prior to use.
<b>Background</b>	Research grade biosimilar. Not for use in therapeutic or diagnostic procedures for humans or animals.
<b>Usage</b>	Research use only



## Anti-CX3CL1(quetmolimab biosimilar) mAb ELISA

0.2  $\mu$ g of Human CX3CL1, His tagged protein per well

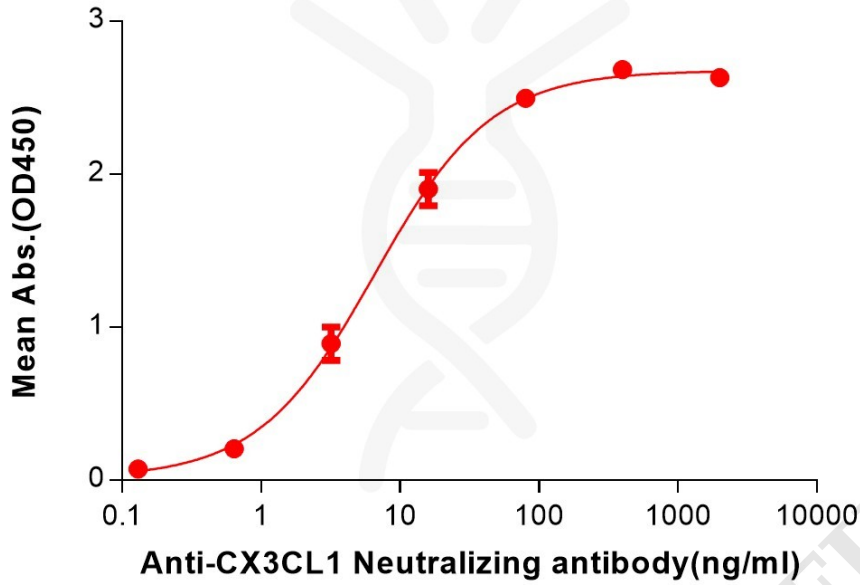


Figure 1. ELISA plate pre-coated by 2  $\mu$ g/mL (100  $\mu$ L/well) Human CX3CL1 Protein, His Tag (PME101343) can bind Anti-CX3CL1(quetmolimab biosimilar) mAb (BME100259) in a linear range of 0.64-80 ng/mL.

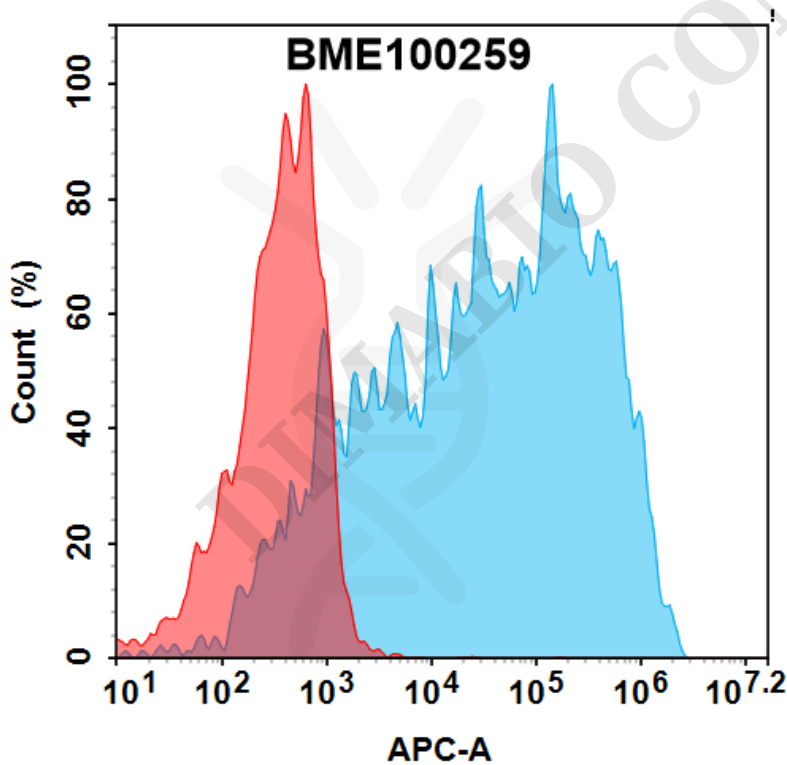


Figure 2. Flow cytometry analysis with 0.5  $\mu$ g/ml Anti-CX3CL1(quetmolimab biosimilar) mAb (BME100259) on HEK293 cells transfected with human CX3CL1 (Blue histogram) or HEK293 transfected with irrelevant protein (Red histogram).

