

PRODUCT INFORMATION

Common Name	BMS-936557, MDX-1100
Synonyms	Gamma-IP10;IP-10;SCYB10;INP10
Conjugate	Unconjugated
Applications	ELISA; Flow Cyt
Recommended Dilutions	ELISA 1:5000-10000; Flow Cyt 1:100
Formulation & Reconstitution	Lyophilized from sterile PBS, pH 7.4. Normally 5 % - 8% trehalose is added as protectants before lyophilization. Please see Certificate of Analysis for specific instructions of reconstitution.
Host Species	Homo sapiens
IgG type	Human IgG1 – kappa
Reactivity	Human
Target	CXCL10
Uniprot ID	P02778
Description	Anti-CXCL10(eldelumab biosimilar) mAb
Delivery	In Stock
Storage & Shipping	Store at -20°C to -80°C for 12 months in lyophilized form. After reconstitution, if not intended for use within a month, aliquot and store at -80°C (Avoid repeated freezing and thawing). Lyophilized proteins are shipped at ambient temperature.
Background	Research grade biosimilar. Not for use in therapeutic or diagnostic procedures for humans or animals.
Usage	Research use only



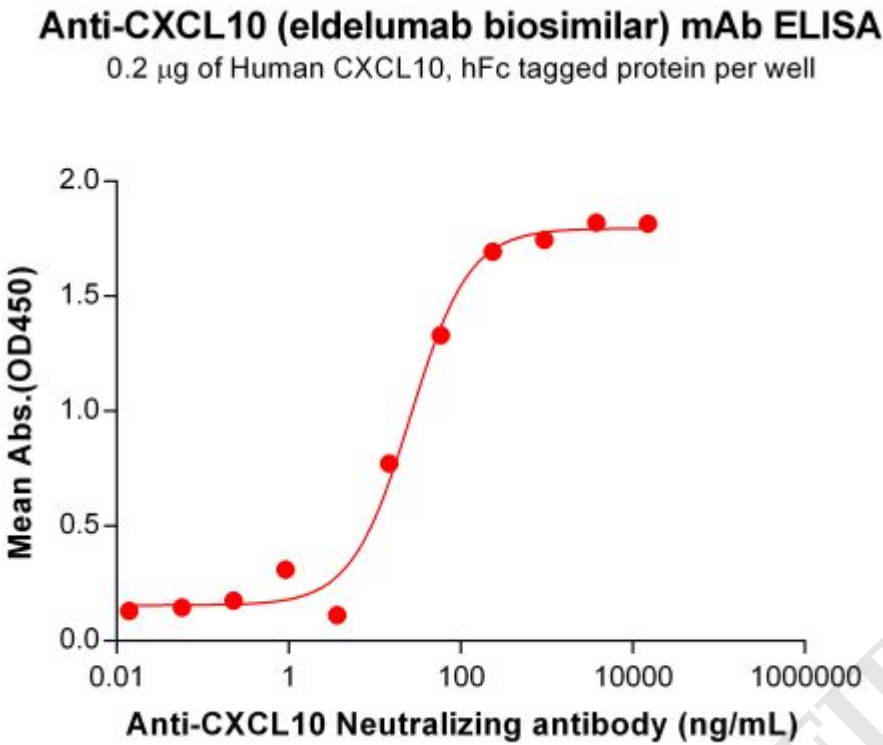


Figure 1. ELISA plate pre-coated by 2 µg/mL (100 µL/well) Human CXCL10 Protein, hFc Tag (PME101121) can bind Anti-CXCL10 Neutralizing antibody (BME100133) in a linear range of 3.66-234.38 ng/mL. In order to specifically detect BME100133, mouse anti-human Fab-specific antibody was used as detection antibody.

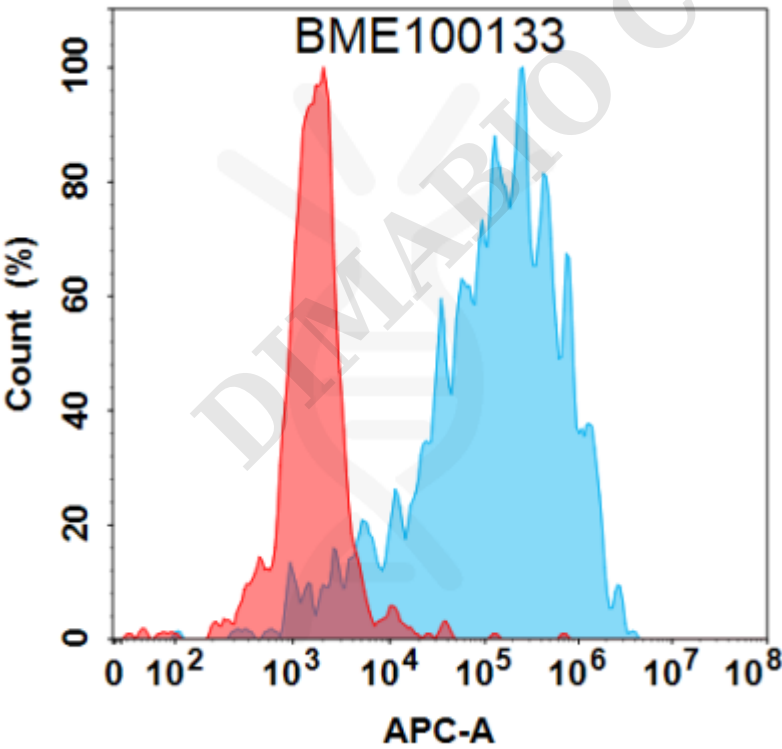


Figure 2. Flow cytometry analysis under cell membrane permeable condition with 1 µg/mL Anti-CXCL10 (eldelumab biosimilar) mAb (BME100133) on HEK293 cells transfected with Human CXCL10 protein (Blue histogram) or HEK293 transfected with irrelevant protein (Red histogram).

