

PRODUCT INFORMATION

Common Name	53Hu37 M1
Conjugate	Unconjugated
Synonyms	CXC-R3; CXCR-3; CD183; CKR-L2; GPR9
Applications	ELISA, Flow Cyt
Endotoxin	Less than 1.0 EU/ μ g by the LAL method. For <1 EU/mg requirements, please contact us for customization.
Recommended Dilutions	ELISA 1:5000-10000, Flow Cyt 1:100
Formulation & Reconstitution	Lyophilized from sterile PBS, pH 7.4. Normally 5% - 8% trehalose is added as protectants before lyophilization. Please see Certificate of Analysis for specific instructions of reconstitution.
Host Species	Humanized
IgG type	Human IgG1(S239D,I332E,E356D,M358L) - kappa
Reactivity	Human
Target	CXCR3
Uniprot ID	P49682
Description	Anti-CXCR3 (53Hu37 biosimilar)mAb
Delivery	In Stock
Storage&Shipping	Store at -20°C to -80°C for 12 months in lyophilized form. After reconstitution, if not intended for use within a month, aliquot and store at -80°C (Avoid repeated freezing and thawing). Lyophilized antibodies are shipped at ambient temperature.
Sterility	Products are supplied non-sterile. For cell culture applications, dilute in appropriate medium and sterile-filter (0.22 μ m) prior to use.
Background	Research grade biosimilar. Not for use in therapeutic or diagnostic procedures for humans or animals.
Usage	Research use only



Anti-CXCR3 (53Hu37 biosimilar)mAb ELISA

0.2 μ g of Human CXCR3, hFc tagged protein per well

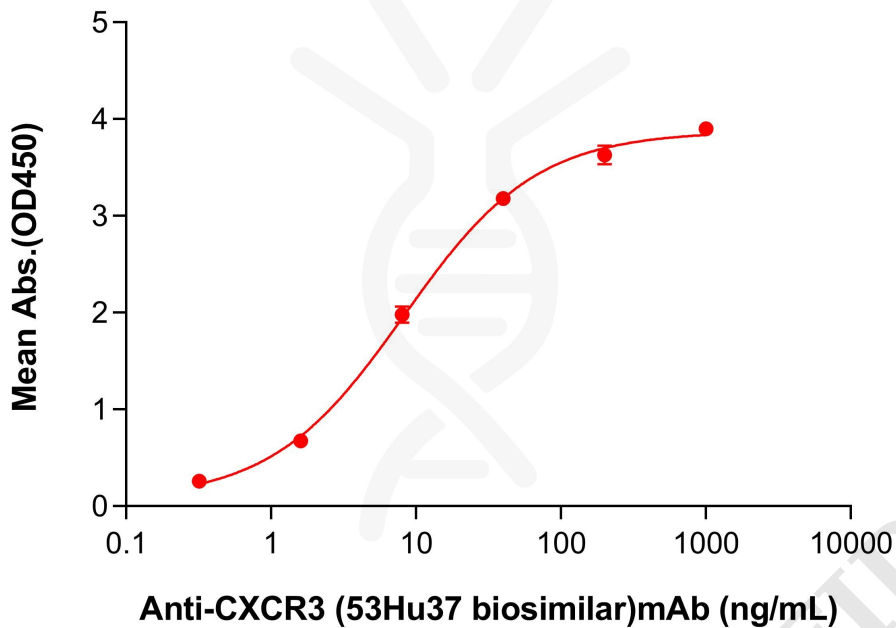


Figure 1. ELISA plate pre-coated by 2 μ g/mL (100 μ L/well) Human CXCR3 Protein, hFc Tag (PME100833) can bind Anti-CXCR3 (53Hu37 biosimilar)mAb (BME100283) in a linear range of 1.6–8 ng/mL. In order to specifically detect BME100283, mouse anti-human Fab-specific antibody was used as detection antibody.

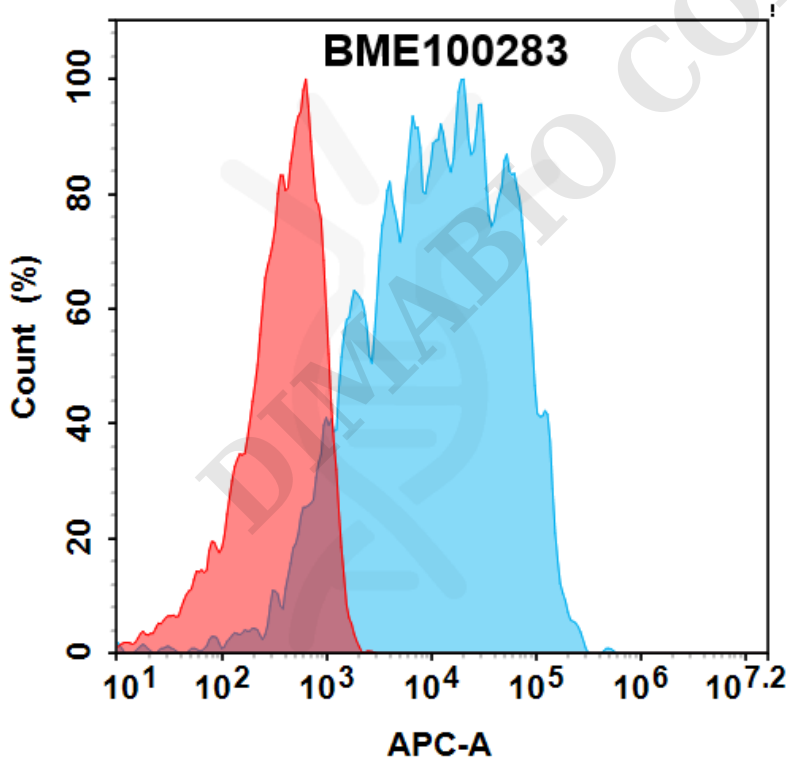


Figure 2. Flow cytometry analysis with 0.5 μ g/ml Anti-CXCR3 (53Hu37 biosimilar)mAb (BME100283) on HEK293 cells transfected with human CXCR3 (Blue histogram) or HEK293 transfected with irrelevant protein (Red histogram).

