

PRODUCT INFORMATION

Clone ID	14E3
Target	DM1
Synonyms	N/A
Host Species	Rabbit
Description	Anti-DM1 antibody(14E3); Rabbit mAb
Delivery	In Stock
Uniprot ID	N/A
IgG type	Rabbit IgG
Clonality	Monoclonal
Reactivity	N/A
Applications	ELISA
Recommended Dilutions	ELISA 1/5000-10000
Purification	Purified from cell culture supernatant by affinity chromatography
Endotoxin	Less than 1.0 EU/μg by the LAL method. For <1 EU/mg requirements, please contact us for customization.
Formulation & Reconstitution	Lyophilized from sterile PBS, pH 7.4. Normally 5% - 8% trehalose is added as protectants before lyophilization. Please see Certificate of Analysis for specific instructions of reconstitution.
Storage&Shipping	Store at -20°C to -80°C for 12 months in lyophilized form. After reconstitution, if not intended for use within a month, aliquot and store at -80°C (Avoid repeated freezing and thawing). Lyophilized proteins are shipped at ambient temperature.
Sterility	Products are supplied non-sterile. For cell culture applications, dilute in appropriate medium and sterile-filter (0.22 μm) prior to use.
Background	N/A
Usage	Research use only
Conjugate	Unconjugated
DIMA Disclaimer	All DIMA recombinant antibodies are genuinely generated by DIMA Biotech. They are all under patent application. Any protein sequencing or reverse engineering attempt is prohibited. We are actively scr



ELISA assay to evaluate Anti-DM1 Antibody 0.2 μ g BSA-DM1 per well

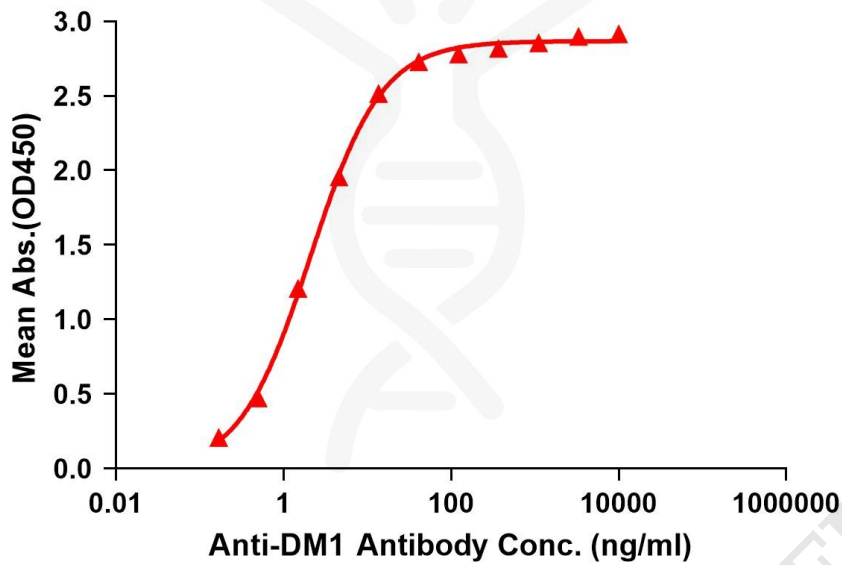


Figure 1. Elisa plates were pre-coated with BSA-DM1 (0.2 μ g/per well). Serial diluted anti-DM1 monoclonal antibody (DME101062) solutions were added, washed, and incubated with secondary antibody before Elisa reading. From above data, the EC50 for anti-DM1 monoclonal antibody binding with BSA-DM1 is 2.11ng/ml.

