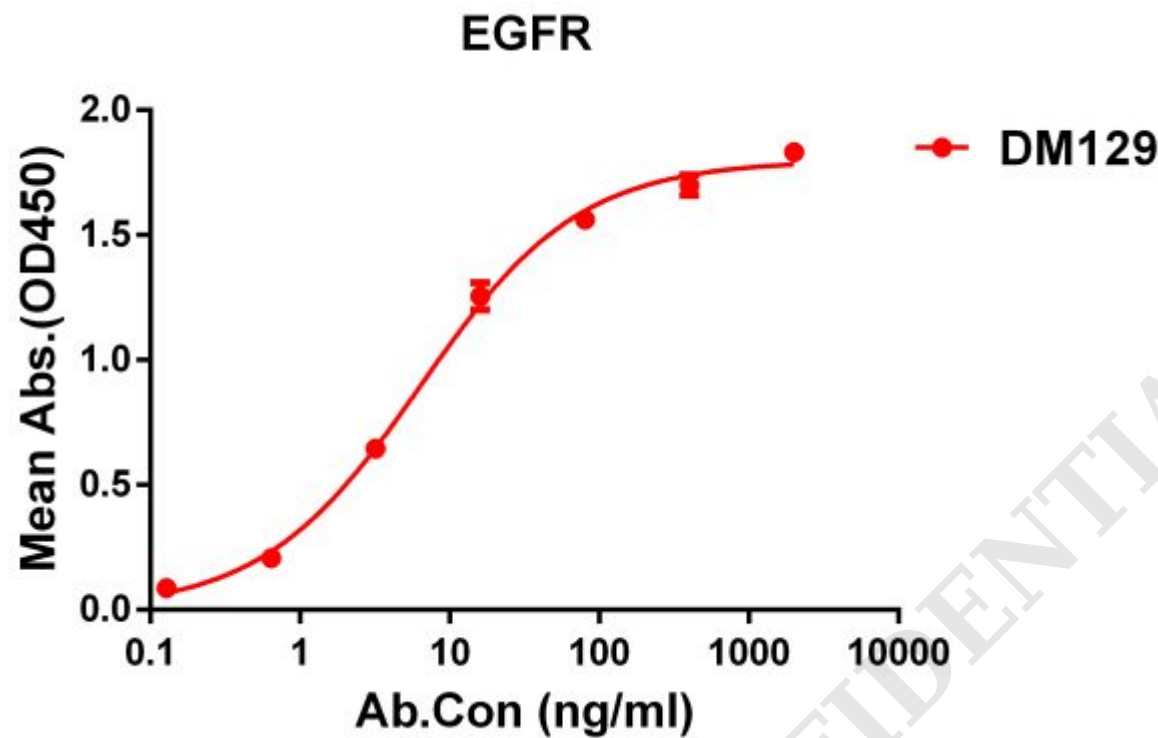


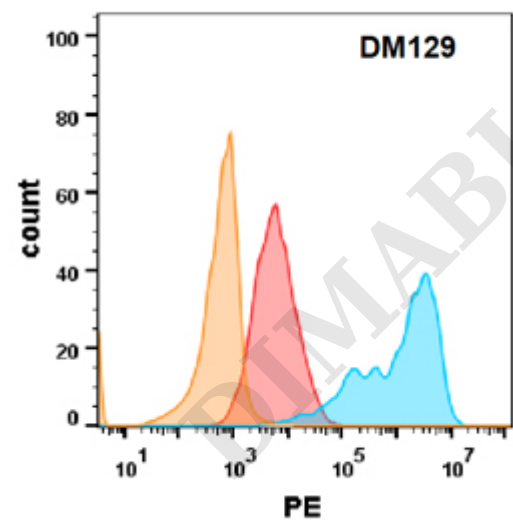
PRODUCT INFORMATION

Clone ID	DM129
Target	EGFR
Synonyms	EGFR;ERBB;ERBB1;HER1;PIG61;mENA
Host Species	Rabbit
Description	Anti-EGFR antibody(DM129); Rabbit mAb
Delivery	In Stock
Uniprot ID	P00533
IgG type	Rabbit IgG
Clonality	Monoclonal
Reactivity	Human
Applications	ELISA; Flow Cyt
Recommended Dilutions	ELISA 1:5000-10000; Flow Cyt 1:100
Purification	Purified from cell culture supernatant by affinity chromatography
Formulation & Reconstitution	Lyophilized from sterile PBS, pH 7.4. Normally 5 % - 8% trehalose is added as protectants before lyophilization. Please see Certificate of Analysis for specific instructions of reconstitution.
Storage & Shipping	Store at -20°C to -80°C for 12 months in lyophilized form. After reconstitution, if not intended for use within a month, aliquot and store at -80°C (Avoid repeated freezing and thawing). Lyophilized proteins are shipped at ambient temperature.
Background	The protein encoded by this gene is a transmembrane glycoprotein that is a member of the protein kinase superfamily. This protein is a receptor for members of the epidermal growth factor family. EGFR is a cell surface protein that binds to epidermal growth factor. Binding of the protein to a ligand induces receptor dimerization and tyrosine autophosphorylation and leads to cell proliferation. Mutations in this gene are associated with lung cancer.
Usage	Research use only





**Figure 1.** ELISA plate pre-coated by 1  $\mu$ g/ml (100  $\mu$ l/well) Human EGFR protein, His tagged protein ([getskuurl sku="PME100099"]) can bind Rabbit anti-EGFR monoclonal antibody(**clone: DM129**) in a linear range of 0. 1-18 ng/ml.



**Figure 2.** EGFR protein is highly expressed on the surface of Expi293 cell membrane. Flow cytometry analysis with Anti-EGFR (**DM129**) on Expi293 cells transfected with human EGFR (Blue histogram) or Expi293 transfected with irrelevant protein (Red histogram),and Isotype antibody on Expi293 transfected with irrelevant protein(Orange histogram)

