

PRODUCT INFORMATION

Common Name	ABT-806
Conjugate	Unconjugated
Synonyms	ERBB; ERBB1; HER1
Applications	ELISA
Recommended Dilutions	ELISA 1:5000-10000
Formulation & Reconstitution	Lyophilized from sterile PBS, pH 7.4. Normally 5% - 8% trehalose is added as protectants before lyophilization. Please see Certificate of Analysis for specific instructions of reconstitution.
Host Species	Humanized
IgG type	Human IgG1(E356D,M358L) - kappa
Reactivity	Human
Target	EGFR
Uniprot ID	P00533
Description	Anti-EGFR(depatuxizumab biosimilar) mAb
Delivery	In Stock
Storage&Shipping	Store at -20°C to -80°C for 12 months in lyophilized form. After reconstitution, if not intended for use within a month, aliquot and store at -80°C (Avoid repeated freezing and thawing). Lyophilized antibodies are shipped at ambient temperature.
Background	Research grade biosimilar. Not for use in therapeutic or diagnostic procedures for humans or animals.
Usage	Research use only



Anti-EGFR(depatuxizumab biosimilar) mAb ELISA

0.2 μg of Human EGFR, His tagged protein per well

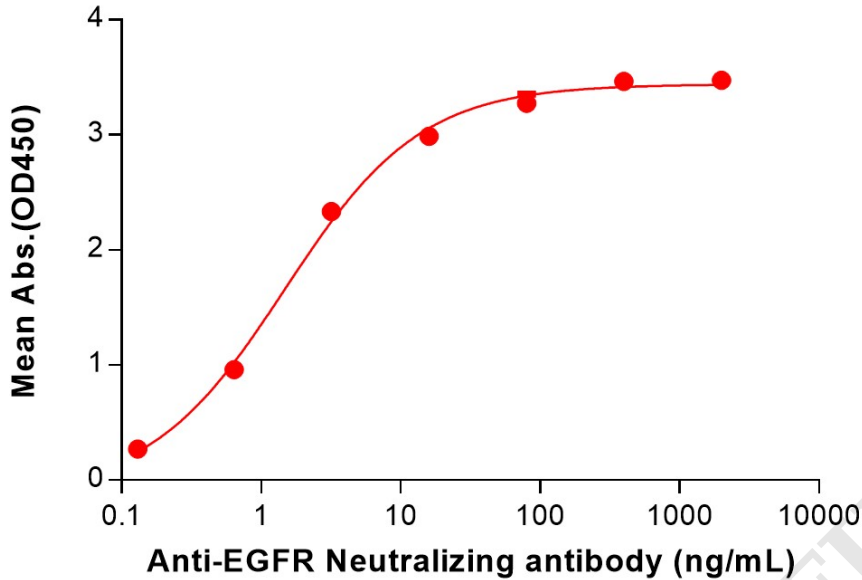


Figure 1. ELISA plate pre-coated by 2 $\mu\text{g}/\text{mL}$ (100 $\mu\text{L}/\text{well}$) Human EGFR Protein, His Tag (PME100099) can bind Anti-EGFR(depatuxizumab biosimilar) mAb (BME100252) in a linear range of 0.13–16 ng/mL.

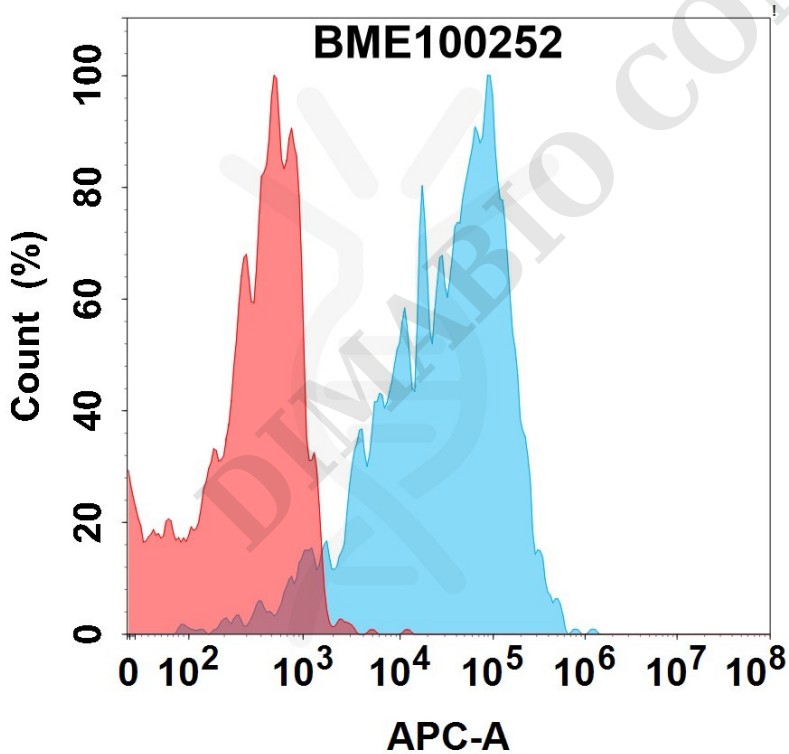


Figure 2. Flow cytometry analysis with 15 $\mu\text{g}/\text{mL}$ Anti-EGFR(depatuxizumab biosimilar) mAb (BME100252) on HEK293 cells transfected with Human EGFR protein (Blue histogram) or HEK293 transfected with irrelevant protein (Red histogram).



Anti-EGFR(depatuxizumab biosimilar) mAb ELISA

0.2 μ g of Human EGFR(313-445), hFc tagged protein per well

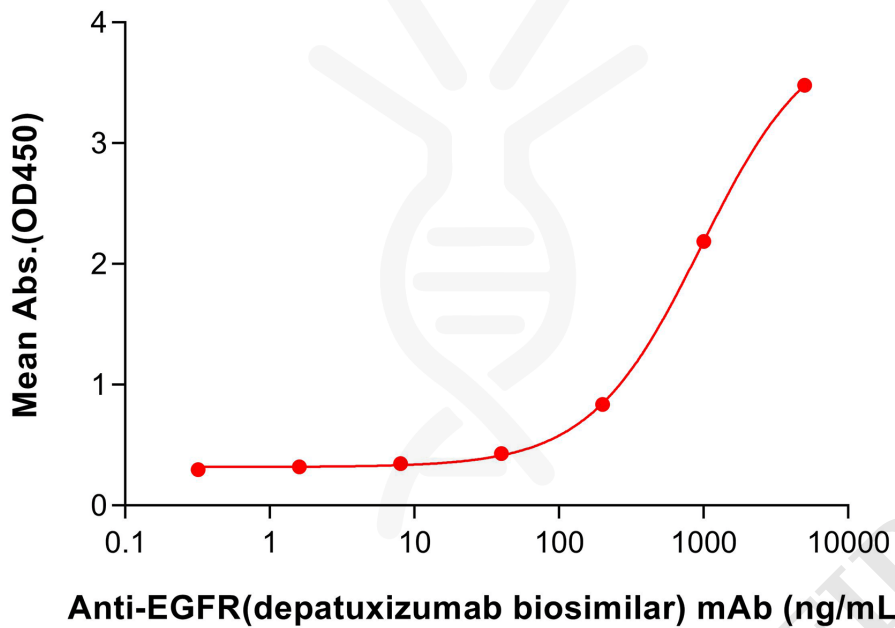


Figure 3. ELISA plate pre-coated by 2 μ g/mL (100 μ L/well) Human EGFR(313-445) Protein, hFc Tag (PME101867) can bind Anti-EGFR(depatuxizumab biosimilar) mAb (BME100252) in a linear range of 200–1000 ng/mL. In order to specifically detect BME100252, mouse anti-human Fab-specific antibody was used as detection antibody.

