

**PRODUCT INFORMATION**

<b>Common Name</b>	QD6□AZD9592 without cMet mAb
<b>Conjugate</b>	Unconjugated
<b>Synonyms</b>	ERBB; ERBB1; HER1
<b>Applications</b>	ELISA, Flow Cyt
<b>Endotoxin</b>	Less than 1.0 EU/μg by the LAL method. For <1 EU/mg requirements, please contact us for customization.
<b>Recommended Dilutions</b>	ELISA 1:5000-10000, Flow Cyt 1:100
<b>Formulation &amp; Reconstitution</b>	Lyophilized from sterile PBS, pH 7.4. Normally 5% - 8% trehalose is added as protectants before lyophilization. Please see Certificate of Analysis for specific instructions of reconstitution.
<b>Host Species</b>	Humanized
<b>IgG type</b>	Human IgG1 - kappa
<b>Reactivity</b>	Human
<b>Target</b>	EGFR
<b>Uniprot ID</b>	P00533
<b>Description</b>	Anti-EGFR(QD6 biosimilar) mAb
<b>Delivery</b>	In Stock
<b>Storage&amp;Shipping</b>	Store at -20°C to -80°C for 12 months in lyophilized form. After reconstitution, if not intended for use within a month, aliquot and store at -80°C (Avoid repeated freezing and thawing). Lyophilized antibodies are shipped at ambient temperature.
<b>Background</b>	Research grade biosimilar. Not for use in therapeutic or diagnostic procedures for humans or animals.
<b>Usage</b>	Research use only



## Anti-EGFR(QD6 biosimilar) mAb ELISA

0.2  $\mu$ g of Human EGFR, His tagged protein per well

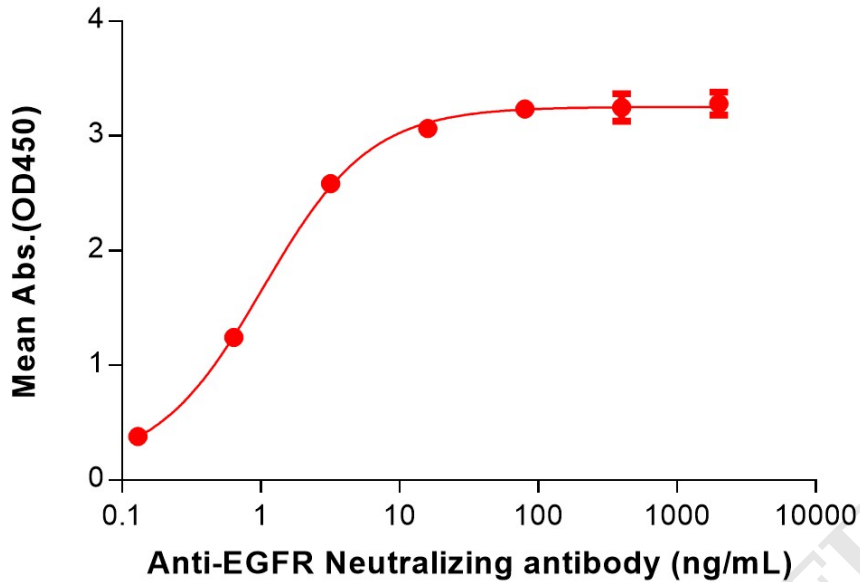


Figure 1. ELISA plate pre-coated by 2  $\mu$ g/mL (100  $\mu$ L/well) Human EGFR Protein, His Tag (PME100099) can bind Anti-EGFR(QD6 biosimilar) mAb (BME100250) in a linear range of 0.13-16 ng/mL.

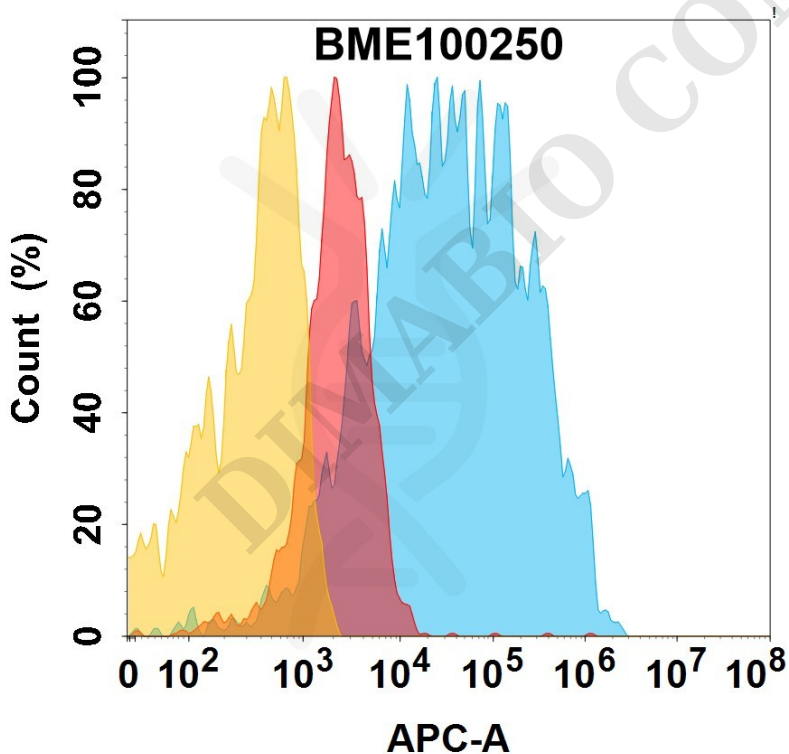


Figure 2. Flow cytometry analysis with 15 $\mu$ g/mL Anti-EGFR(QD6 biosimilar) mAb (BME100250) on HEK293 cells transfected with Human EGFR protein (Blue histogram) or HEK293 transfected with irrelevant protein (Red histogram), and isotype antibody on HEK293 transfected with irrelevant protein (Orange histogram).

