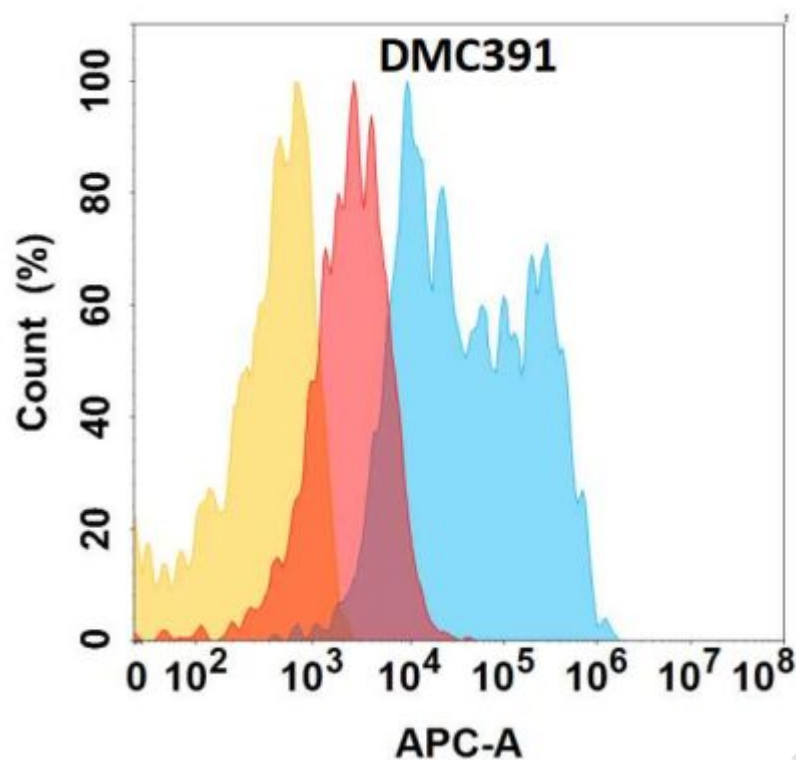


PRODUCT INFORMATION

Clone ID	DMC391
Target	FOLR1
Synonyms	FBP; FOLR; FRalpha
Host Species	Rabbit
Description	Anti-FOLR1 antibody(DMC391); IgG1 Chimeric mAb
Delivery	In Stock
Uniprot ID	P15328
IgG type	Rabbit/Human Fc chimeric IgG1
Clonality	Monoclonal
Reactivity	Human
Applications	Flow Cyt
Recommended Dilutions	Flow Cyt 1:100
Purification	Purified from cell culture supernatant by affinity chromatography
Formulation & Reconstitution	Lyophilized from sterile PBS, pH 7.4. Normally 5 % - 8% trehalose is added as protectants before lyophilization. Please see Certificate of Analysis for specific instructions of reconstitution.
Storage & Shipping	Store at -20°C to -80°C for 12 months in lyophilized form. After reconstitution, if not intended for use within a month, aliquot and store at -80°C (Avoid repeated freezing and thawing). Lyophilized proteins are shipped at ambient temperature.
Background	The protein encoded by this gene is a member of the folate receptor family. Members of this gene family bind folic acid and its reduced derivatives; and transport 5-methyltetrahydrofolate into cells. This gene product is a secreted protein that either anchors to membranes via a glycosyl-phosphatidylinositol linkage or exists in a soluble form. Mutations in this gene have been associated with neurodegeneration due to cerebral folate transport deficiency. Due to the presence of two promoters; multiple transcription start sites; and alternative splicing; multiple transcript variants encoding the same protein have been found for this gene.
Usage	Research use only





**Figure 1.** FOLR1 protein is highly expressed on the surface of Expi293 cell membrane. Flow cytometry analysis with Anti-FOLR1 (DMC391) on Expi293 cells transfected with human FOLR1 (Blue histogram) or Expi293 transfected with irrelevant protein (Red histogram), and Isotype antibody on Expi293 transfected with irrelevant protein (Orange histogram).

