

PRODUCT INFORMATION

| | |
|------------------------------|---|
| Common Name | AMG133 |
| Synonyms | GIP-R |
| Applications | ELISA, Flow Cyt |
| Recommended Dilutions | ELISA 1:5000-10000, Flow Cyt 1:100 |
| Formulation & Reconstitution | Lyophilized from sterile PBS, pH 7.4. Normally 5 % - 8% trehalose is added as protectants before lyophilization. Please see Certificate of Analysis for specific instructions of reconstitution. |
| Host Species | Homo sapiens |
| IgG type | IgG1(E155C,R175C,N180G,V185C) |
| Reactivity | Human |
| Target | GIPR |
| Uniprot ID | P48546 |
| Description | Anti-GIPR(maridebart biosimilar) mAb |
| Delivery | In Stock |
| Storage & Shipping | Store at -20°C to -80°C for 12 months in lyophilized form. After reconstitution, if not intended for use within a month, aliquot and store at -80°C (Avoid repeated freezing and thawing). Lyophilized antibodies are shipped at ambient temperature. |
| Background | Research grade biosimilar. Not for use in therapeutic or diagnostic procedures for humans or animals. |
| Usage | Research use only |



Anti-GIPR(maridebart biosimilar) mAb ELISA
0.2 μ g of Human GIPR , hFc tagged protein per well

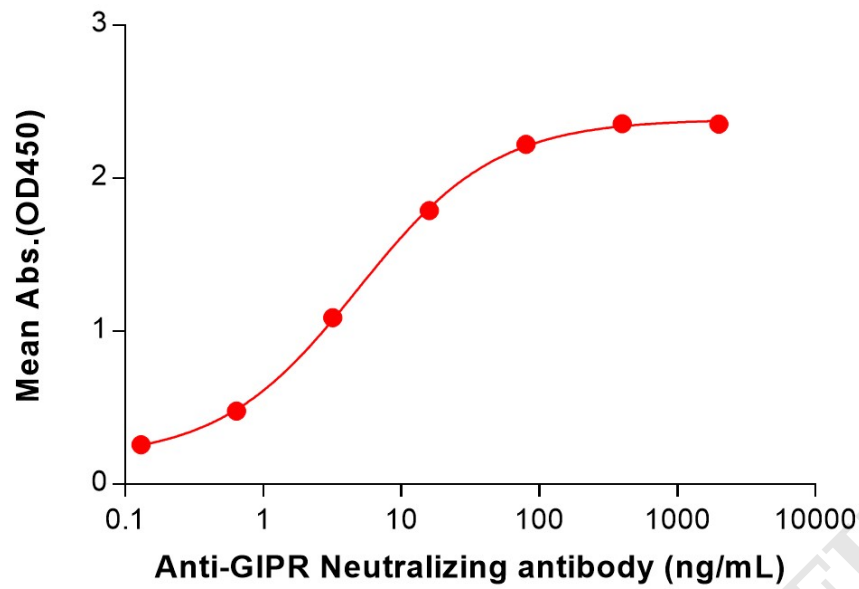


Figure 1. ELISA plate pre-coated by 2 μ g/mL (100 μ L/well) Human GIPR Protein, hFc Tag (PME101267) can bind Anti-GIPR(maridebart biosimilar) mAb (BME100209) in a linear range of 0.64-80 ng/mL. In order to specifically detect BME100209, mouse anti-human Fab-specific antibody was used as detection antibody.

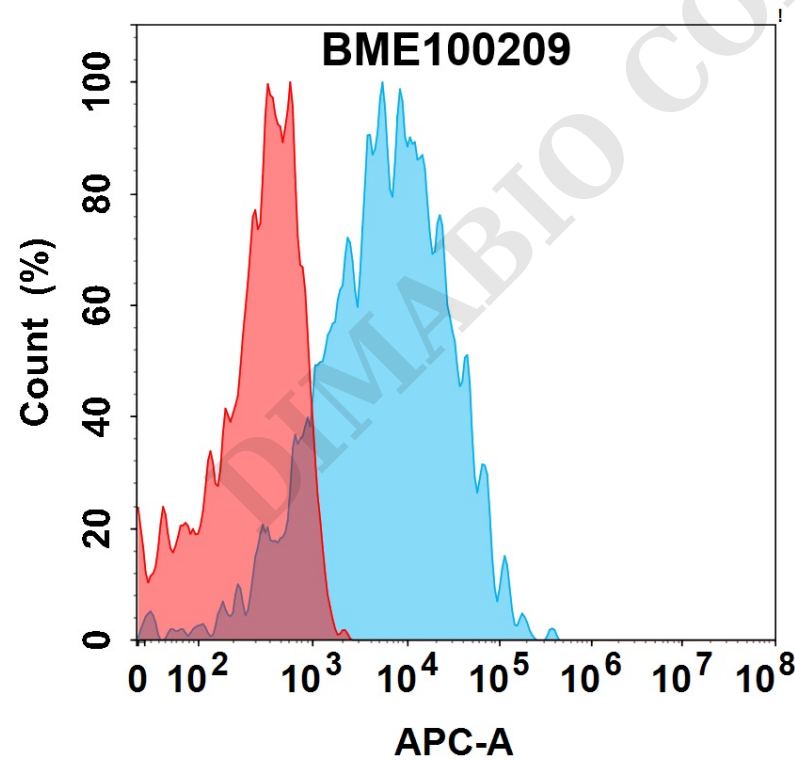


Figure 2. Flow cytometry analysis with 1 μ g/mL Anti-GIPR(maridebart biosimilar) mAb (BME100209) on Expi293 cells transfected with Human GIPR protein (Blue histogram) or Expi293 transfected with irrelevant protein (Red histogram).

