

PRODUCT INFORMATION

|                              |  |
|------------------------------|--|
| Clone ID                     | DM80   |
| Target                       | GITR   |
| Synonyms                     | AITR; GITR; TNFRSF18; CD357  |
| Host Species                 | Rabbit   |
| Description                  | Anti-GITR antibody(DM80); Rabbit mAb   |
| Delivery                     | In Stock   |
| Uniprot ID                   | Q9Y5U5   |
| IgG type                     | Rabbit IgG   |
| Clonality                    | Monoclonal   |
| Reactivity                   | Human  |
| Applications                 | ELISA; Flow Cyt  |
| Recommended Dilutions        | ELISA 1:5000-10000; Flow Cyt 1:100   |
| Purification                 | Purified from cell culture supernatant by affinity chromatography  |
| Formulation & Reconstitution | Lyophilized from sterile PBS, pH 7.4. Normally 5 % - 8% trehalose is added as protectants before lyophilization. Please see Certificate of Analysis for specific instructions of reconstitution.   |
| Storage&Shipping             | Store at -20°C to -80°C for 12 months in lyophilized form. After reconstitution, if not intended for use within a month, aliquot and store at -80°C (Avoid repeated freezing and thawing). Lyophilized proteins are shipped at ambient temperature.  |
| Background                   | This gene encodes a member of the TNF-receptor superfamily. The encoded receptor has been shown to have increased expression upon T-cell activation; and it is thought to play a key role in dominant immunological self-tolerance maintained by CD25( )CD4( ) regulatory T cells. Knockout studies in mice also suggest the role of this receptor is in the regulation of CD3-driven T-cell activation and programmed cell death. Three alternatively spliced transcript variants of this gene encoding distinct isoforms have been reported. |
| Usage                        | Research use only  |
| Conjugate                    | Unconjugated   |
| DIMA Disclaimer              | All DIMA recombinant antibodies are genuinely generated by DIMA Biotech. They are all under patent application. Any protein sequencing or reverse engineering attempt is prohibited. We are actively scrutinizing all patent application to ensure no IP infringement.   |



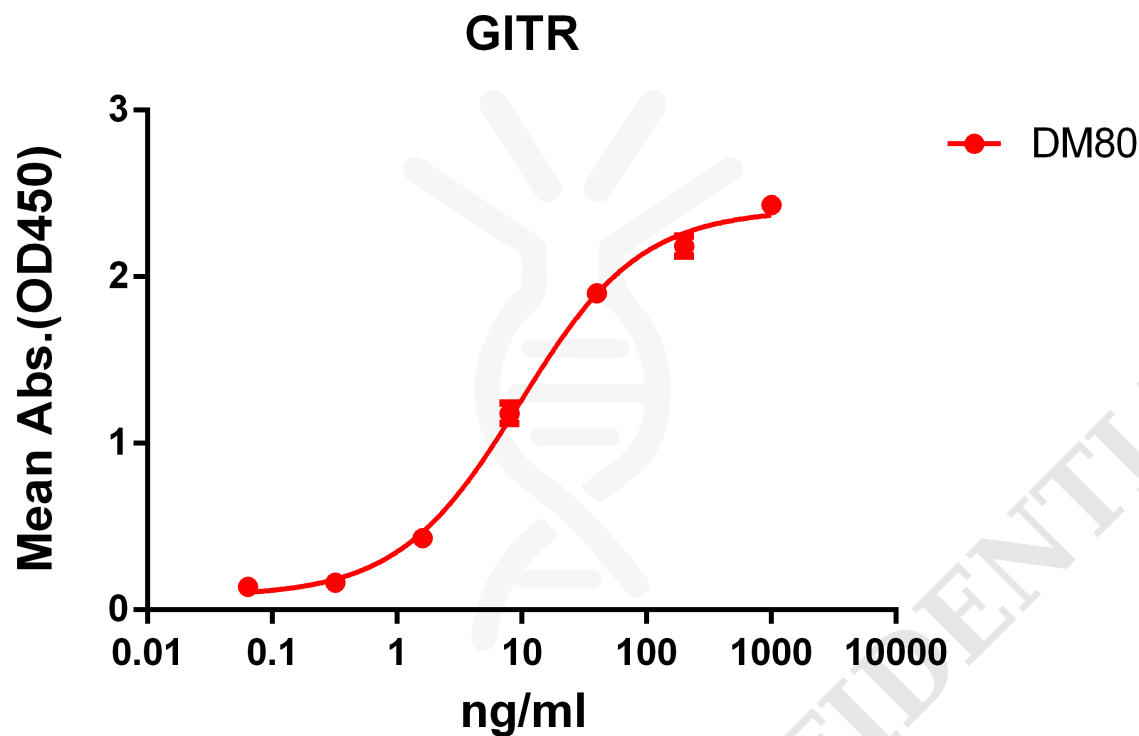


Figure 1. ELISA plate pre-coated by 2  $\mu\text{g/ml}$  (100  $\mu\text{l/well}$ ) Human GITR protein, hFc-His tagged protein PME100018 can bind Rabbit anti-GITR monoclonal antibody (clone: DM80) in a linear range of 1-100 ng/ml.

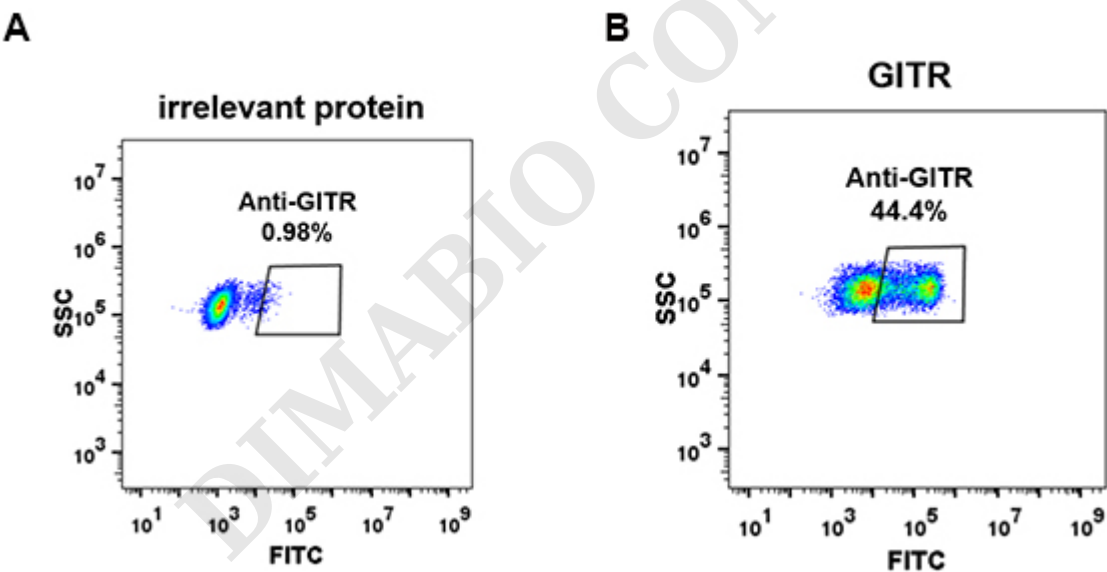


Figure 2. HEK293 cell line transfected with irrelevant protein (A) and human GITR (B) were surface stained with Rabbit anti-GITR monoclonal antibody 1 $\mu\text{g/ml}$  (clone: DM80) followed by Alexa 488-conjugated anti-rabbit IgG secondary antibody.



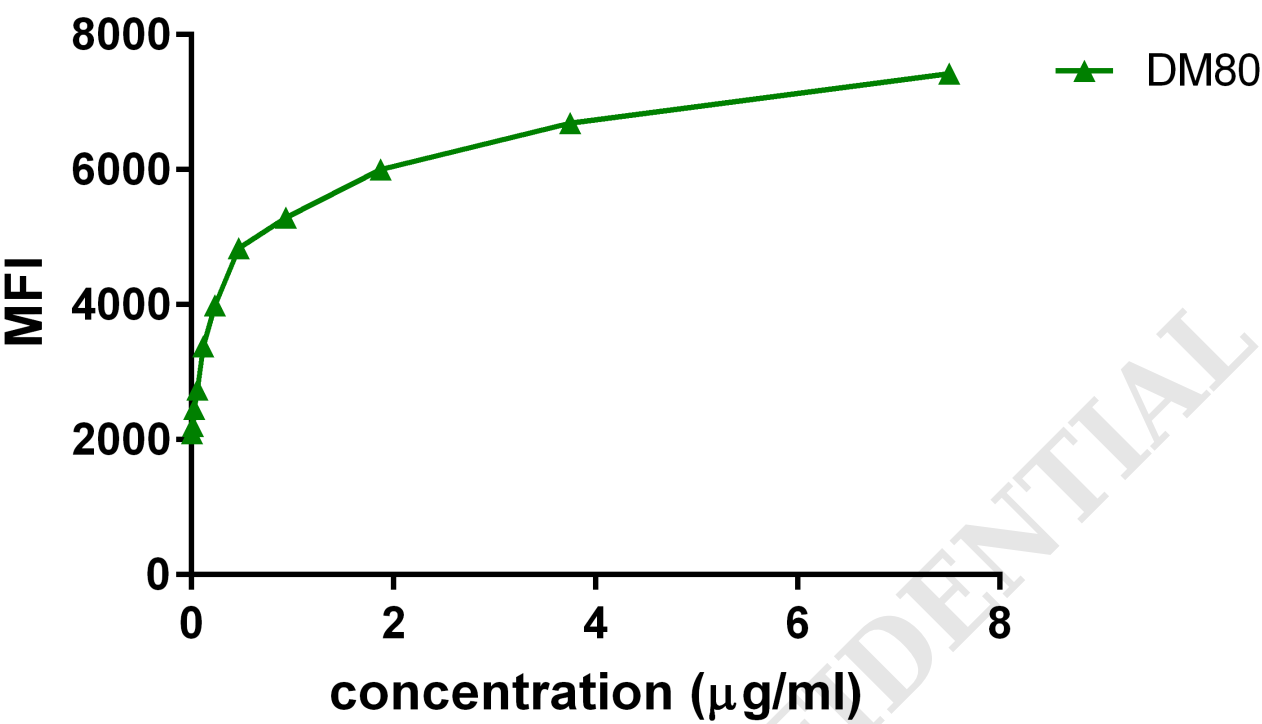


Figure 3. Flow cytometry data of serially titrated Rabbit anti-GITR monoclonal antibody (clone: DM80) on PC3 cells. The Y-axis represents the mean fluorescence intensity (MFI) while the X-axis represents the concentration of IgG used.

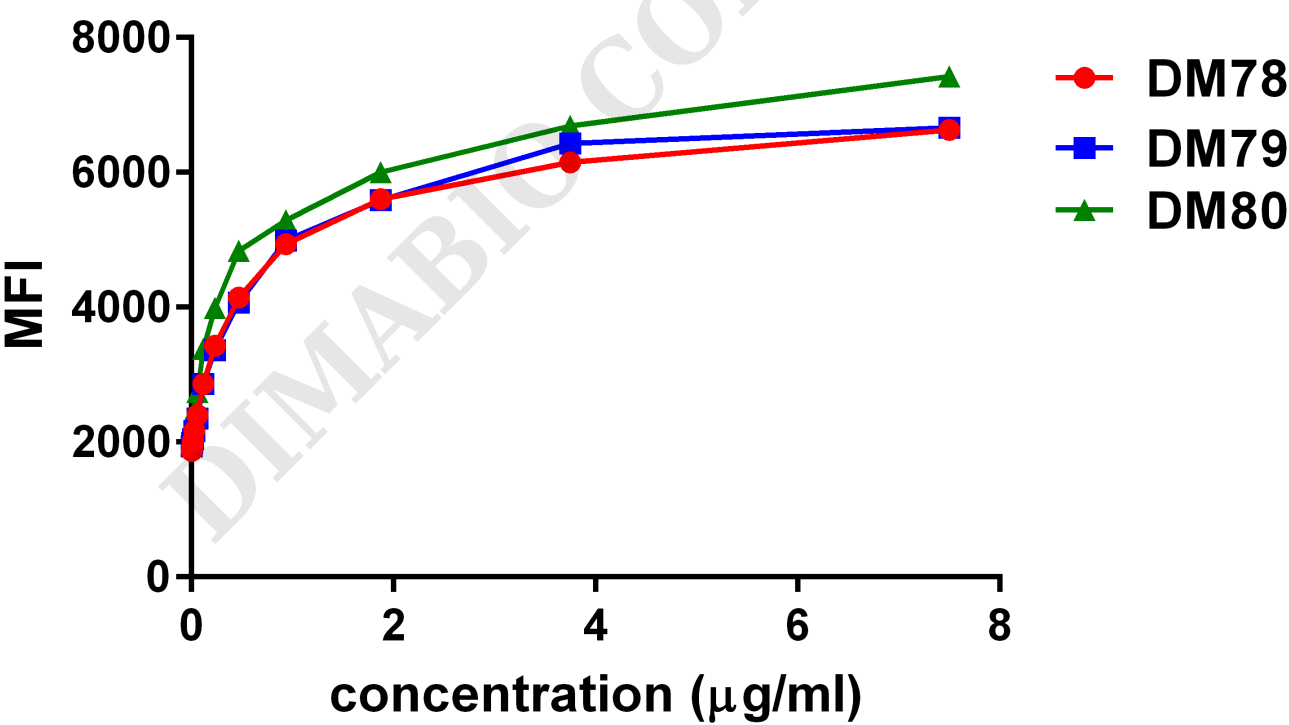


Figure 4. Affinity ranking of different Rabbit anti-GITR mAb clones by titration of different concentration onto PC3 cells. The Y-axis represents the mean fluorescence intensity (MFI) while the X-axis represents the concentration of IgG used.



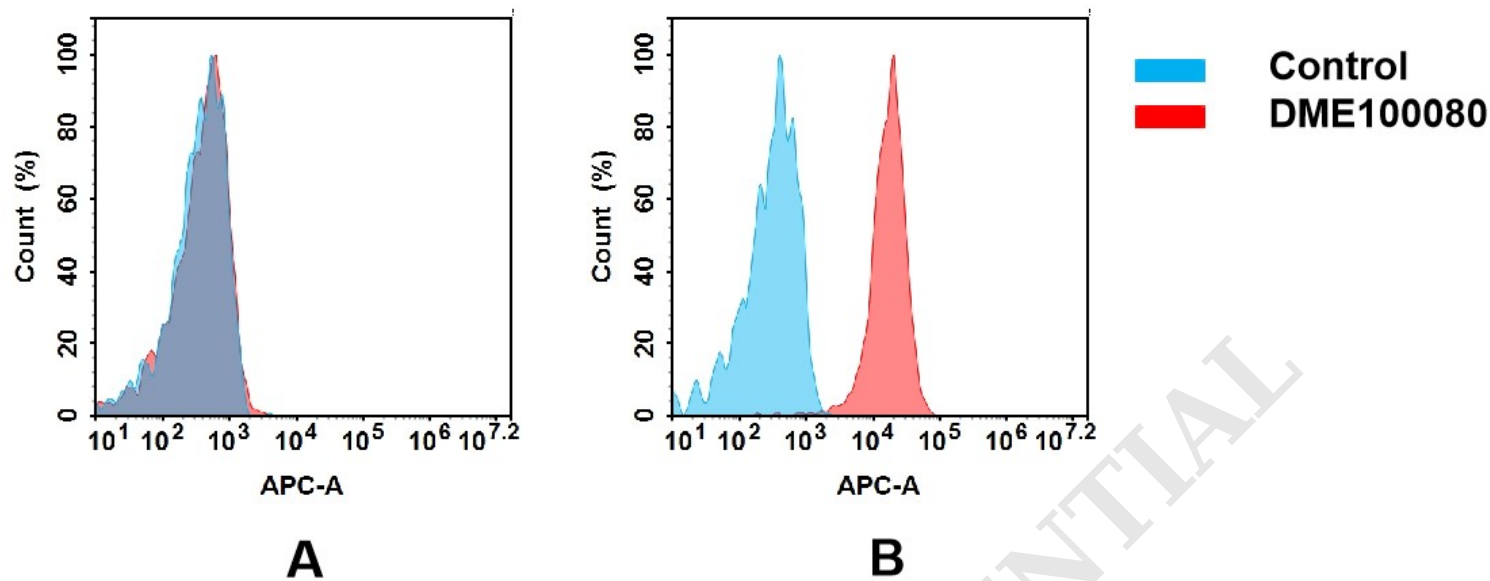


Figure 5. Flow cytometry analysis of antigen binding of rabbit anti-human GITR mAb(DME100080).

(A) DME100080 does not bind to 293T cells that do not express GITR.  
(B) A clear peak shift of DME100080 was seen compared to the control when incubated with GITR-expressing 8226 cells, indicating strong binding of DME100080 to GITR. Antibodies were incubated at 2 µg/mL.

