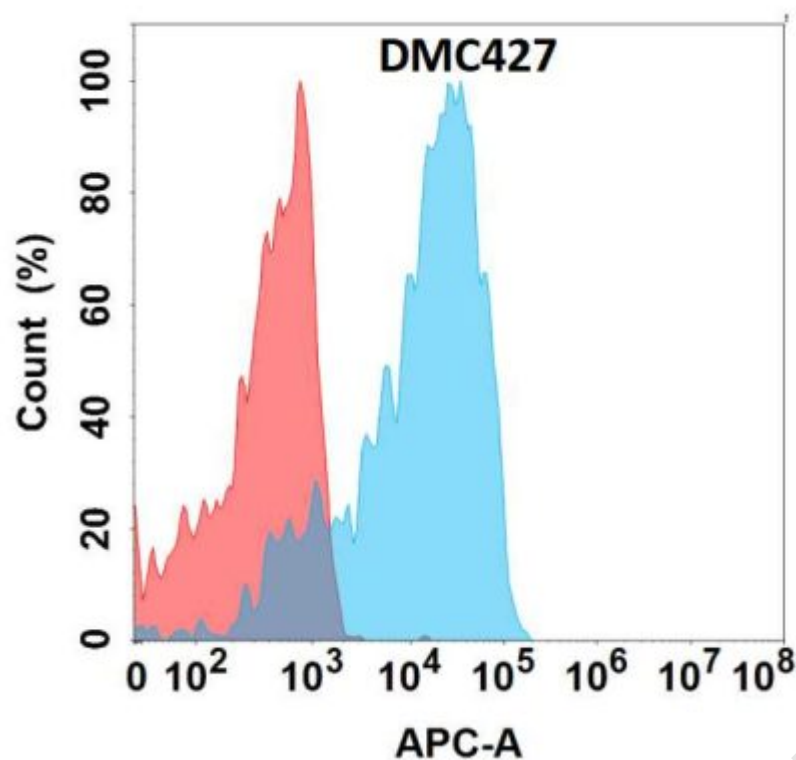


PRODUCT INFORMATION

Clone ID	DMC427
Target	GP6
Synonyms	BDPLT11; GPIV; GPVI
Host Species	Rabbit
Description	Anti-GP6 antibody(DMC427); IgG1 Chimeric mAb
Delivery	In Stock
Uniprot ID	Q9HCN6
IgG type	Rabbit/Human Fc chimeric IgG1
Clonality	Monoclonal
Reactivity	Human
Applications	Flow Cyt
Recommended Dilutions	Flow Cyt 1:100
Purification	Purified from cell culture supernatant by affinity chromatography
Formulation & Reconstitution	Lyophilized from sterile PBS, pH 7.4. Normally 5 % - 8% trehalose is added as protectants before lyophilization. Please see Certificate of Analysis for specific instructions of reconstitution.
Storage & Shipping	Store at -20°C to -80°C for 12 months in lyophilized form. After reconstitution, if not intended for use within a month, aliquot and store at -80°C (Avoid repeated freezing and thawing). Lyophilized proteins are shipped at ambient temperature.
Background	This gene encodes a platelet membrane glycoprotein of the immunoglobulin superfamily. The encoded protein is a receptor for collagen and plays a critical role in collagen-induced platelet aggregation and thrombus formation. The encoded protein forms a complex with the Fc receptor gamma-chain that initiates the platelet activation signaling cascade upon collagen binding. Mutations in this gene are a cause of platelet-type bleeding disorder-11 (BDPLT11). Alternatively spliced transcript variants encoding multiple isoforms have been observed for this gene.
Usage	Research use only





**Figure 1.** Flow cytometry analysis with Anti-GP6 (DMC427) on Expi293 cells transfected with human GP6 (Blue histogram) or Expi293 transfected with irrelevant protein (Red histogram).

