

PRODUCT INFORMATION

Clone ID	DMC497
Target	GPA33
Synonyms	A33
Host Species	Rabbit
Description	Anti-GPA33 antibody(DMC497); IgG1 Chimeric mAb
Delivery	In Stock
Uniprot ID	Q99795
IgG type	Rabbit/Human Fc chimeric IgG1
Clonality	Monoclonal
Reactivity	Human
Applications	Flow Cyt
Recommended Dilutions	Flow Cyt 1:100
Purification	Purified from cell culture supernatant by affinity chromatography
Formulation & Reconstitution	Lyophilized from sterile PBS, pH 7.4. Normally 5 % - 8% trehalose is added as protectants before lyophilization. Please see Certificate of Analysis for specific instructions of reconstitution.
Storage & Shipping	Store at -20°C to -80°C for 12 months in lyophilized form. After reconstitution, if not intended for use within a month, aliquot and store at -80°C (Avoid repeated freezing and thawing). Lyophilized proteins are shipped at ambient temperature.
Background	The glycoprotein encoded by this gene is a cell surface antigen that is expressed in greater than 95% of human colon cancers. The open reading frame encodes a 319-amino acid polypeptide having a putative secretory signal sequence and 3 potential glycosylation sites. The predicted mature protein has a 213-amino acid extracellular region; a single transmembrane domain; and a 62-amino acid intracellular tail. The sequence of the extracellular region contains 2 domains characteristic of the CD2 subgroup of the immunoglobulin (Ig) superfamily. [provided by RefSeq; Jul 2008]
Usage	Research use only



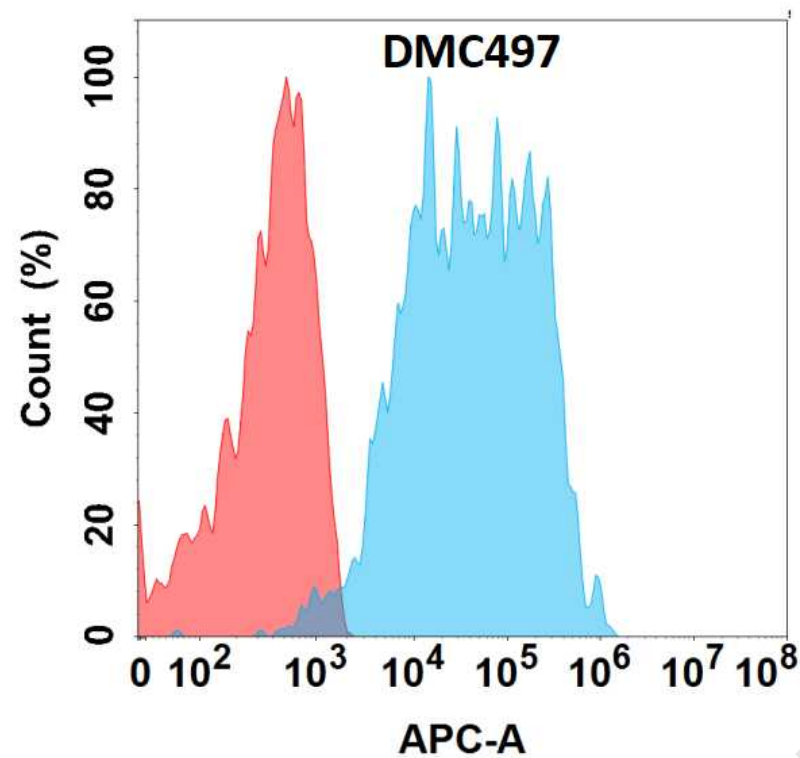


Figure 1. Flow cytometry analysis with Anti-GPA33 (DMC497) on Expi293 cells transfected with human GPA33 (Blue histogram) or Expi293 transfected with irrelevant protein (Red histogram).

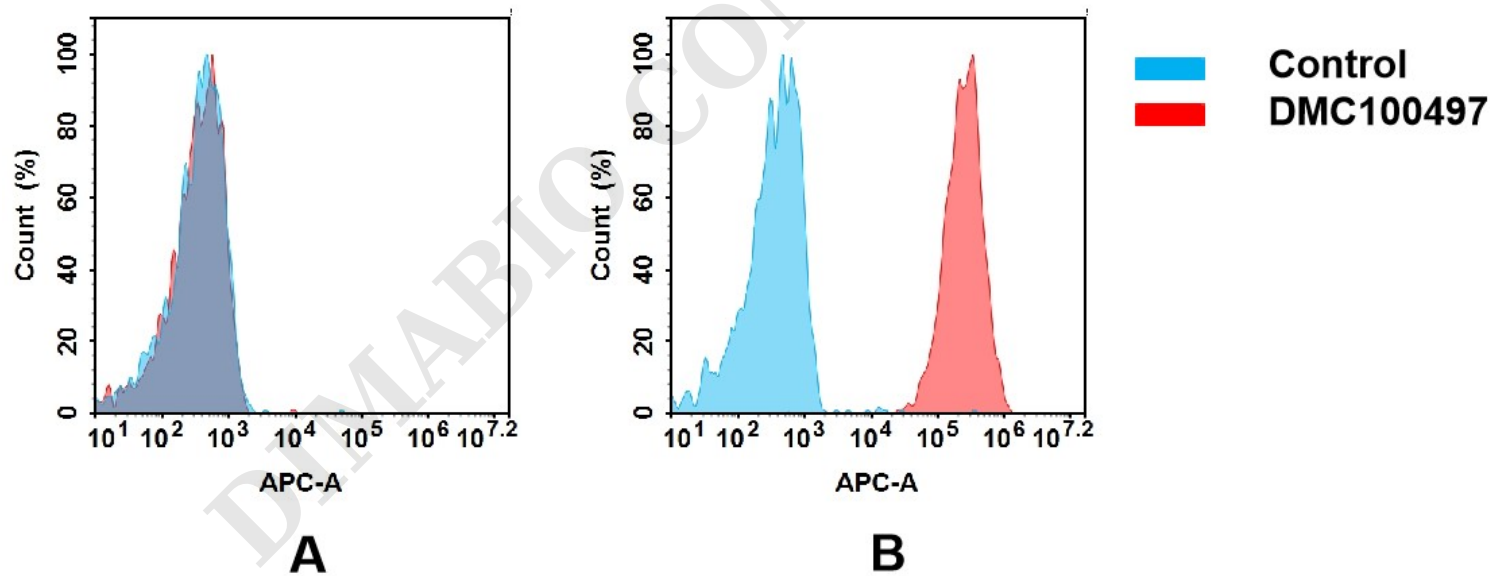


Figure 2. Flow cytometry analysis of antigen binding of anti-human GPA33 mAb(DMC100497).  
(A) DMC100497 does not bind to 293T cells that do not express GPA33.  
(B) A clear peak shift of DMC100497 was seen compared to the control when incubated with GPA33-expressing HT55 cells, indicating strong binding of DMC100497 to GPA33. Antibodies were incubated at 5 µg/mL.

