

PRODUCT INFORMATION

Common Name	GC33, RG7686, RO5137382
Synonyms	DGSX;GTR2-2;MXR7;OCI-5;SDYS;SGB;SGBS;SGBS1
Conjugate	Unconjugated
Applications	ELISA; Flow Cyt
Recommended Dilutions	ELISA 1:5000-10000; Flow Cyt 1:100
Formulation & Reconstitution	Lyophilized from sterile PBS, pH 7.4. Normally 5 % - 8% trehalose is added as protectants before lyophilization. Please see Certificate of Analysis for specific instructions of reconstitution.
Host Species	Humanized
IgG type	Human IgG1 - kappa
Reactivity	Human
Target	GPC3
Uniprot ID	P51654
Description	Anti-GPC3(codrituzumab biosimilar) mAb
Delivery	In Stock
Storage&Shipping	Store at -20°C to -80°C for 12 months in lyophilized form. After reconstitution, if not intended for use within a month, aliquot and store at -80°C (Avoid repeated freezing and thawing). Lyophilized proteins are shipped at ambient temperature.
Background	Research grade biosimilar. Not for use in therapeutic or diagnostic procedures for humans or animals.
Usage	Research use only



Anti-GPC3 (codrituzumab biosimilar) mAb ELISA
0.1 µg of Human GPC3, hFc tagged protein per well

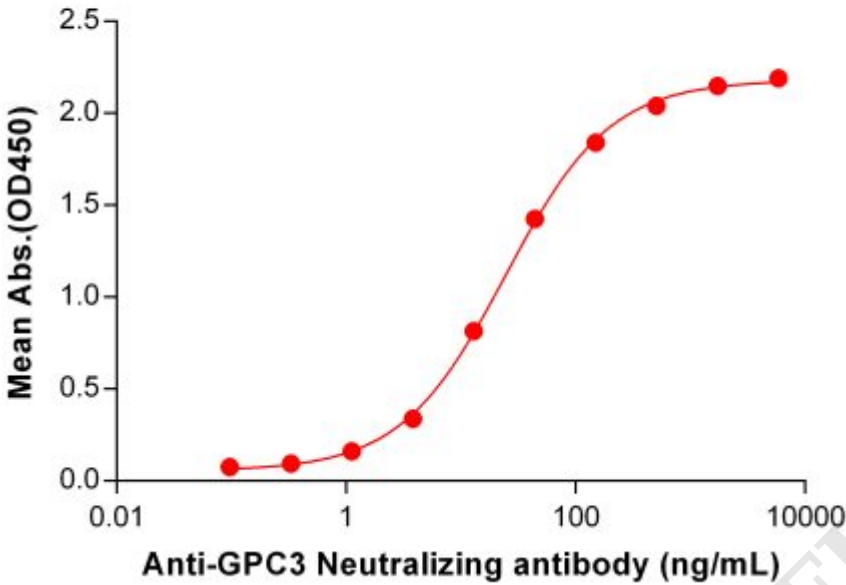


Figure 1. ELISA plate pre-coated by 1 µg/mL (100 µL/well) Human GPC3 Protein, hFc Tag (PME100113) can bind Anti-GPC3 Neutralizing antibody (BME100083) in a linear range of 1.12-508.85 ng/mL. In order to specifically detect BME100083, mouse anti-human Fab-specific antibody was used as detection antibody.

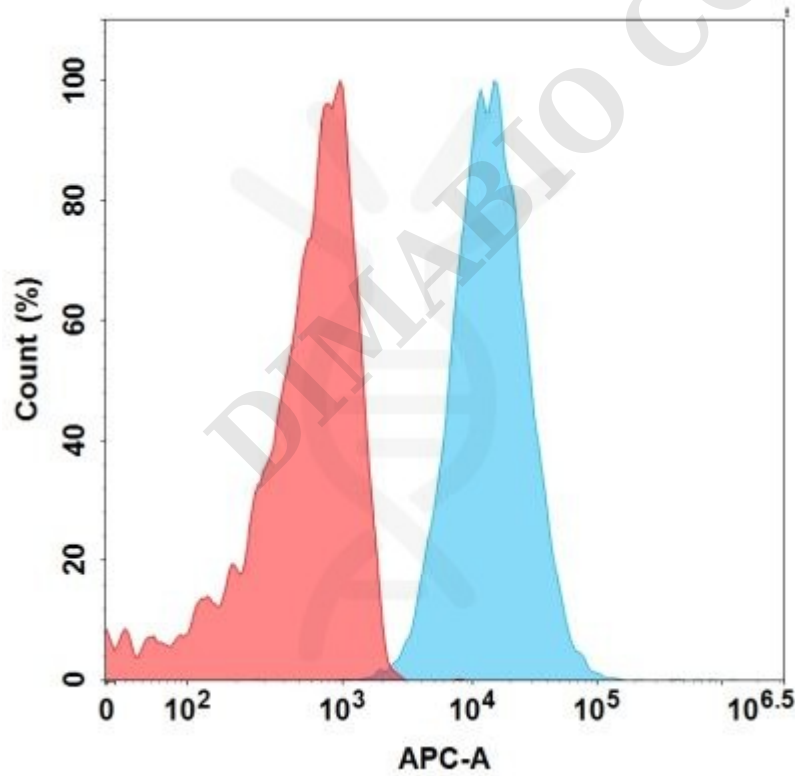


Figure 2. Flow cytometry analysis of Huh-7 cells stained with 1 µg/mL Anti-GPC3 (codrituzumab biosimilar) mAb (BME100083) (Blue histogram) and unstained Huh-7 cells as a negative control (Red histogram).

