

**PRODUCT INFORMATION**

<b>Clone ID</b>	1E10
<b>Target</b>	GPR20
<b>Synonyms</b>	G-protein coupled receptor 20
<b>Host Species</b>	Rabbit
<b>Description</b>	Anti-GPR20 antibody(1E10), Rabbit mAb
<b>Delivery</b>	In Stock
<b>Uniprot ID</b>	Q99678
<b>IgG type</b>	Rabbit IgG
<b>Clonality</b>	Monoclonal
<b>Reactivity</b>	Human
<b>Applications</b>	Flow Cyt
<b>Recommended Dilutions</b>	Flow Cyt 1/100
<b>Purification</b>	Purified from cell culture supernatant by affinity chromatography
<b>Endotoxin</b>	Less than 1.0 EU/μg by the LAL method. For <1 EU/mg requirements, please contact us for customization.
<b>Formulation &amp; Reconstitution</b>	Lyophilized from sterile PBS, pH 7.4. Normally 5 % - 8% trehalose is added as protectants before lyophilization. Please see Certificate of Analysis for specific instructions of reconstitution.
<b>Storage&amp;Shipping</b>	Store at -20°C to -80°C for 12 months in lyophilized form. After reconstitution, if not intended for use within a month, aliquot and store at -80°C (Avoid repeated freezing and thawing).
<b>Sterility</b>	Products are supplied non-sterile. For cell culture applications, dilute in appropriate medium and sterile-filter (0.22 μm) prior to use.
<b>Background</b>	Enables G protein-coupled receptor activity. Predicted to be involved in positive regulation of Rho protein signal transduction and positive regulation of cytosolic calcium ion concentration involved in phospholipase C-activating G protein-coupled signaling pathway. Located in cytosol and plasma membrane. Is integral component of plasma membrane. Part of receptor complex. [provided by Alliance of Genome Resources, Apr 2022]
<b>Usage</b>	Research use only
<b>Conjugate</b>	Unconjugated



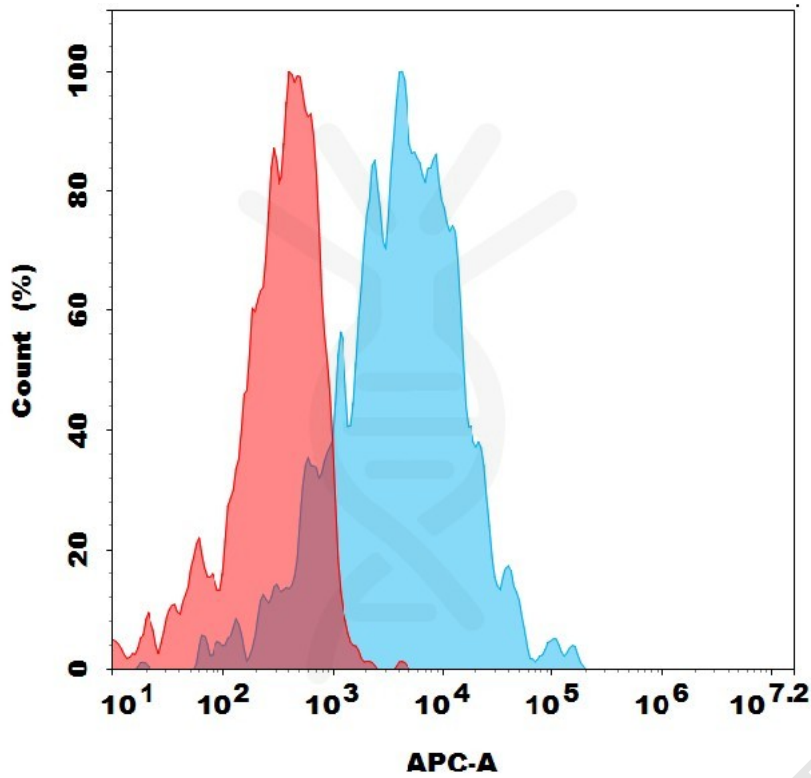


Figure 1. Flow cytometry analysis with 2µg/mL Anti-GPR20 (1E10) mAb on HEK293 cells transfected with human GPR20 (Blue histogram) or HEK293 transfected with irrelevant protein (Red histogram).

