

PRODUCT INFORMATION

Clone ID	DMC368
Target	GPR75
Synonyms	Probable G-protein coupled receptor 75
Host Species	Rabbit
Description	Anti-GPR75 antibody(DMC368); IgG1 Chimeric mAb
Delivery	In Stock
Uniprot ID	O95800
IgG type	Rabbit/Human Fc chimeric IgG1
Clonality	Monoclonal
Reactivity	Human
Applications	Flow Cyt
Recommended Dilutions	Flow Cyt 1:100
Purification	Purified from cell culture supernatant by affinity chromatography
Formulation & Reconstitution	Lyophilized from sterile PBS, pH 7.4. Normally 5 % - 8% trehalose is added as protectants before lyophilization. Please see Certificate of Analysis for specific instructions of reconstitution.
Storage & Shipping	Store at -20°C to -80°C for 12 months in lyophilized form. After reconstitution, if not intended for use within a month, aliquot and store at -80°C (Avoid repeated freezing and thawing). Lyophilized proteins are shipped at ambient temperature.
Background	GPR75 is a member of the G protein-coupled receptor family. GPRs are cell surface receptors that activate guanine-nucleotide binding proteins upon the binding of a ligand.
Usage	Research use only



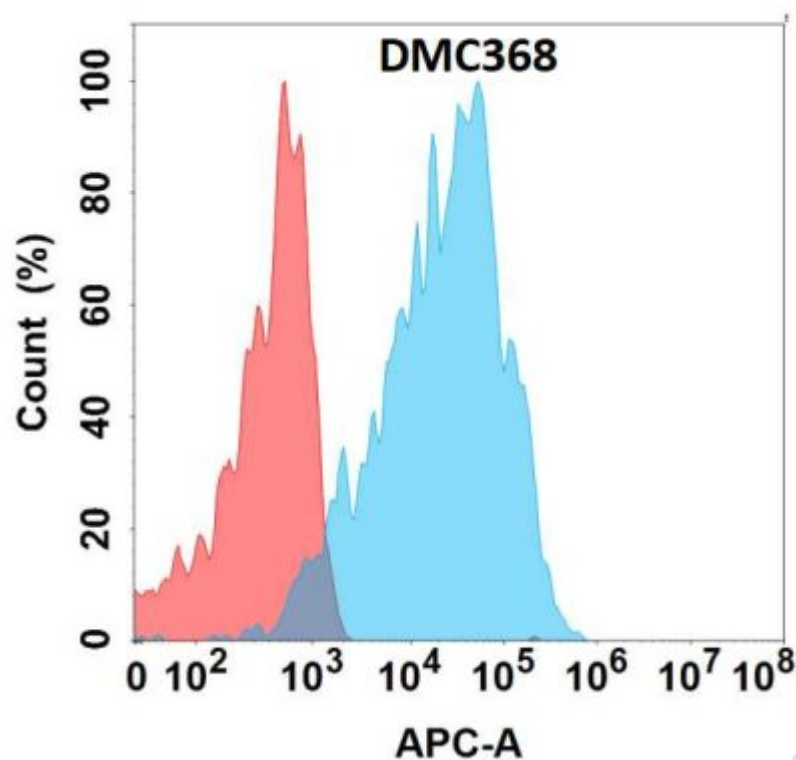


Figure 1. Flow cytometry analysis with Anti-GPR75 (DMC368) on Expi293 cells transfected with human GPR75 (Blue histogram) or Expi293 transfected with irrelevant protein (Red histogram).

