

PRODUCT INFORMATION

Common Name	LBL-034
Conjugate	Unconjugated
Synonyms	GPRC5D
Applications	ELISA, Flow Cyt
Recommended Dilutions	ELISA 1:5000-10000, Flow Cyt 1:100
Formulation & Reconstitution	Lyophilized from sterile PBS, pH 7.4. Normally 5 % - 8% trehalose is added as protectants before lyophilization. Please see Certificate of Analysis for specific instructions of reconstitution.
Host Species	Humanized
IgG type	Human IgG1(L234A,L235A,D265A,P329A,Y349C,E356D,M358L,T366S,L368A,Y407V) - Kappa
Reactivity	Human
Target	GPRC5D
Uniprot ID	Q9NZD1
Description	Anti-GPRC5D(LBL-034 biosimilar) mAb
Delivery	In Stock
Storage&Shipping	Store at -20°C to -80°C for 12 months in lyophilized form. After reconstitution, if not intended for use within a month, aliquot and store at -80°C (Avoid repeated freezing and thawing). Lyophilized antibodies are shipped at ambient temperature.
Background	Research grade biosimilar. Not for use in therapeutic or diagnostic procedures for humans or animals.
Usage	Research use only

Anti-GPRC5D(LBL-034 biosimilar) mAb ELISA

0.2 µg of Human GPRC5D, mFc tagged protein per well

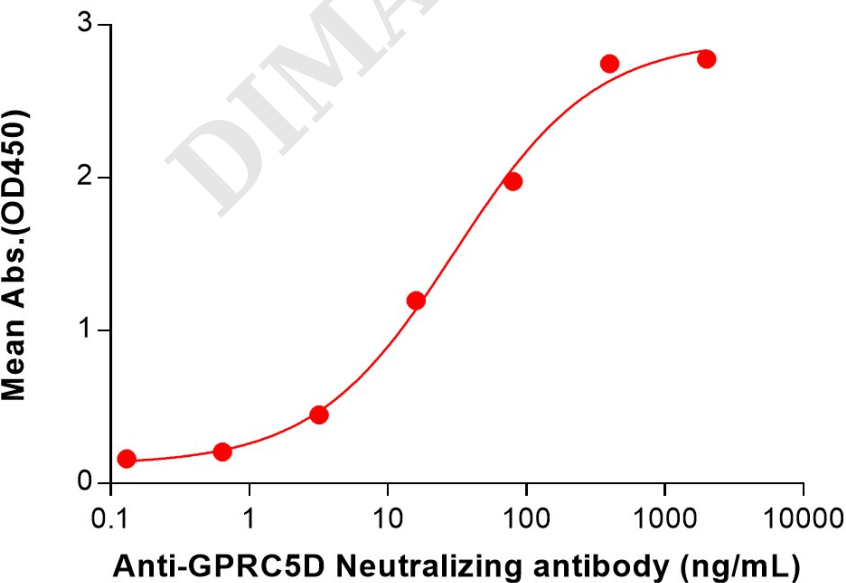


Figure 1. ELISA plate pre-coated by 2 µg/mL (100 µL/well) Human GPRC5D Protein, mFc Tag (PME100559) can bi
GPRC5D(LBL-034 biosimilar) mAb (BME100193) Final linear range of 0.20-400 ng/mL.
Biotechnology B7, Biolake No.666
Gaoxin Road, Wuhan, Hubei, China
Telephone: +1 2409940618(USA)
/+86-18062749453(China)
/+86-400-006-0995(China)



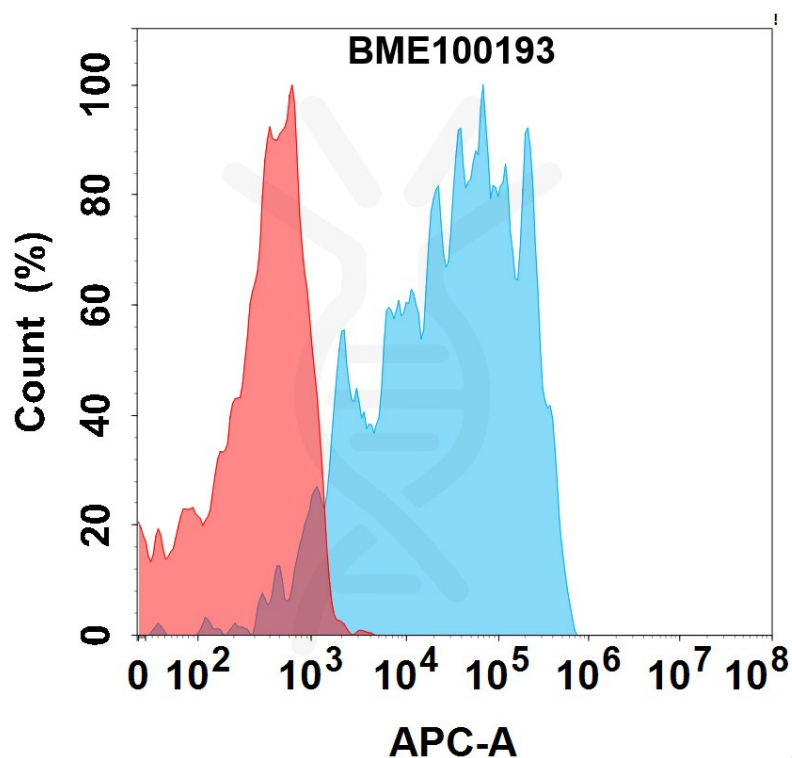


Figure 2. Flow cytometry analysis with 1 μ g/mL Anti-GPRC5D(LBL-034 bisosimilar) mAb (BME100193) on HEK293 cells transfected with Human GPRC5D protein (Blue histogram) or HEK293 transfected with irrelevant protein (Red histogram).

